

REMOVE FROM OFF

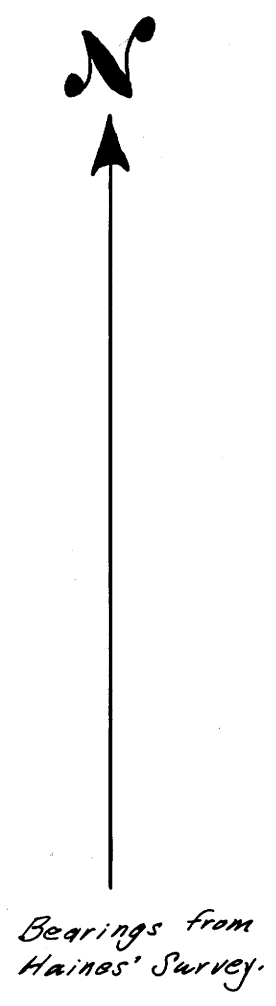
PROPERTY SURVEY FOR D. M. WEBB IN THE R. SMITH D.L.C. 47 IN SEC. 28, T23S, R5W, W.M.

M27-35

FILED *LL*
RECEIVED
FEB 17 1964
COUNTY SURVEYOR
DOUGLAS COUNTY, ORE.



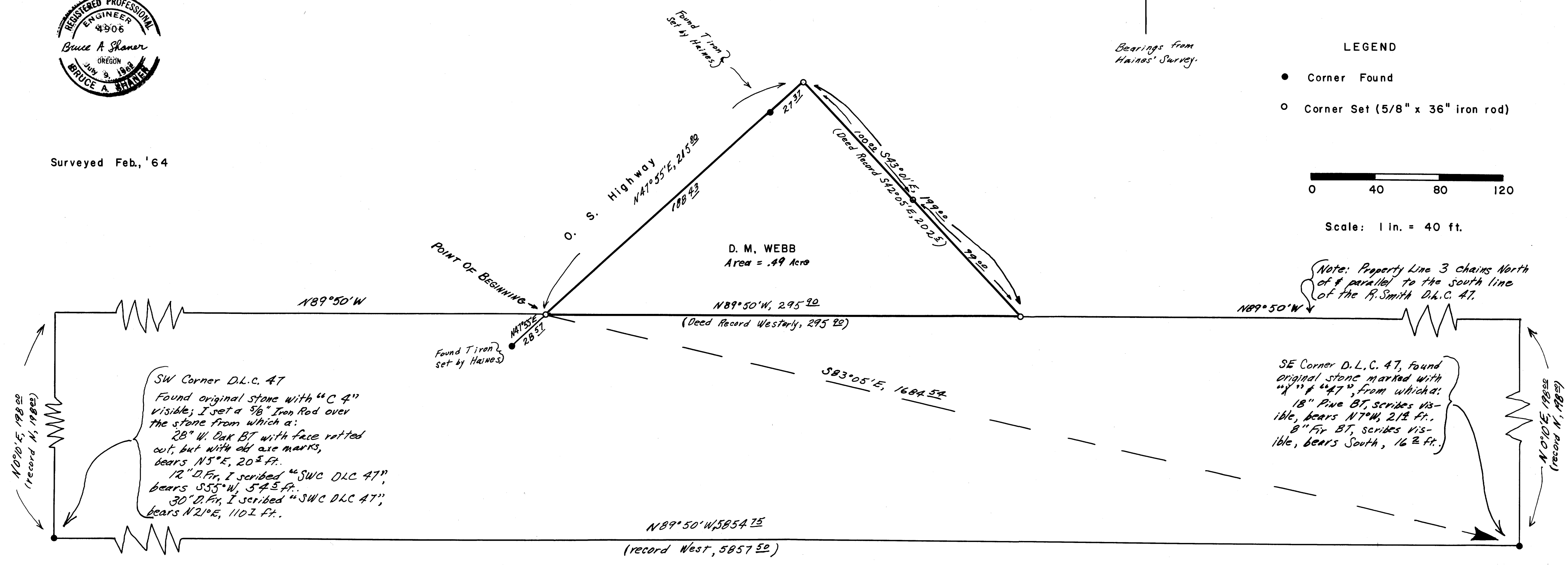
Surveyed Feb, '64



LEGEND

- Corner Found
- Corner Set (5/8" x 36" iron rod)

Scale: 1 in. = 40 ft.



M27-35