

COUNTY SURVEYORS FILE DATA
DO NOT REMOVE FROM OFFICE

E 1/2 SECT 6, T 22 S., R 7 W. W.M.
for
Woolley Logging Co. Drain Oreg.
scale: 1" = 400' Dec. 1963.

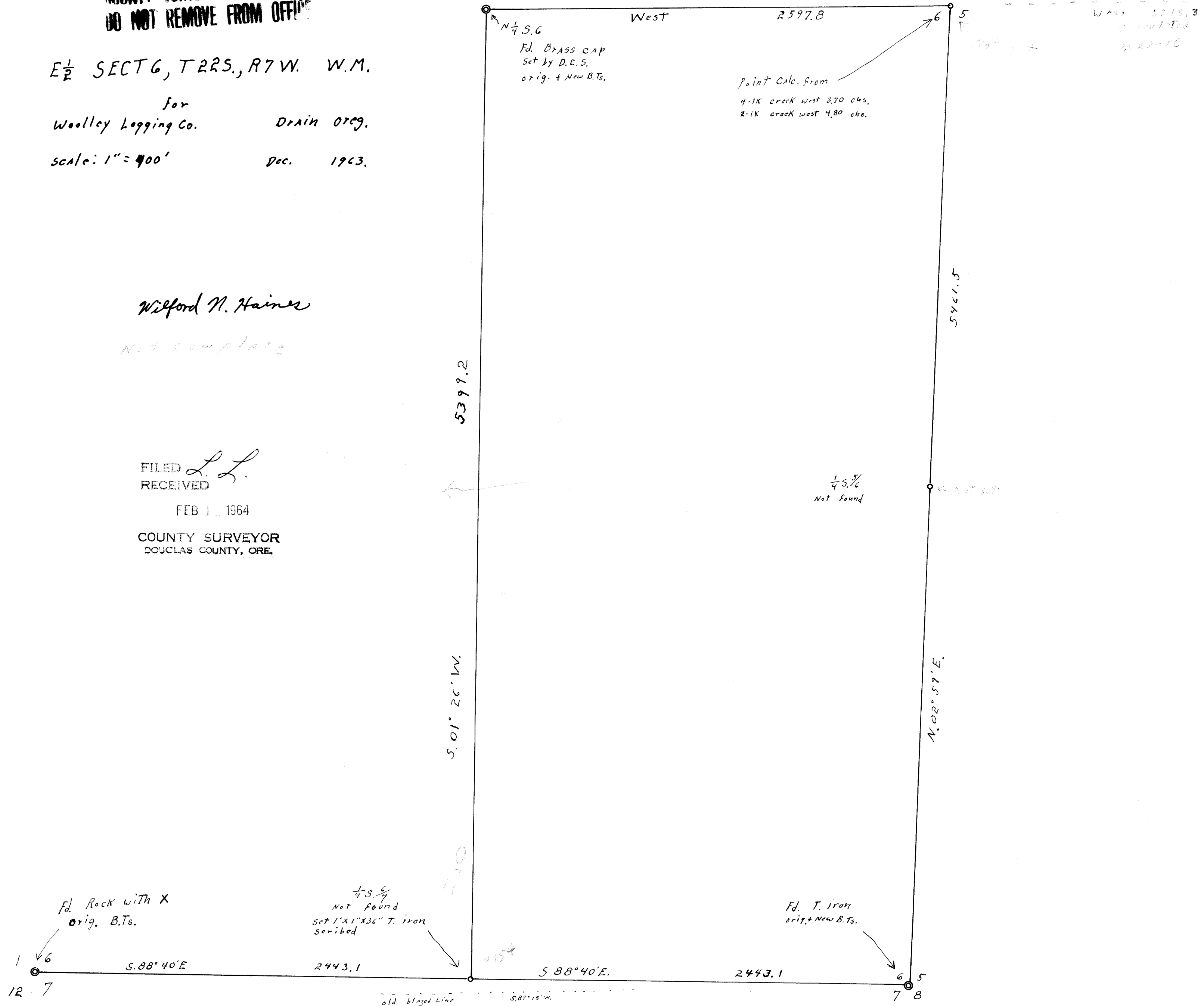
Wilford M. Haines

Not complete

FILED L.L.
RECEIVED

FEB 11 1964

COUNTY SURVEYOR
DOUGLAS COUNTY, ORE.



M 27-34