

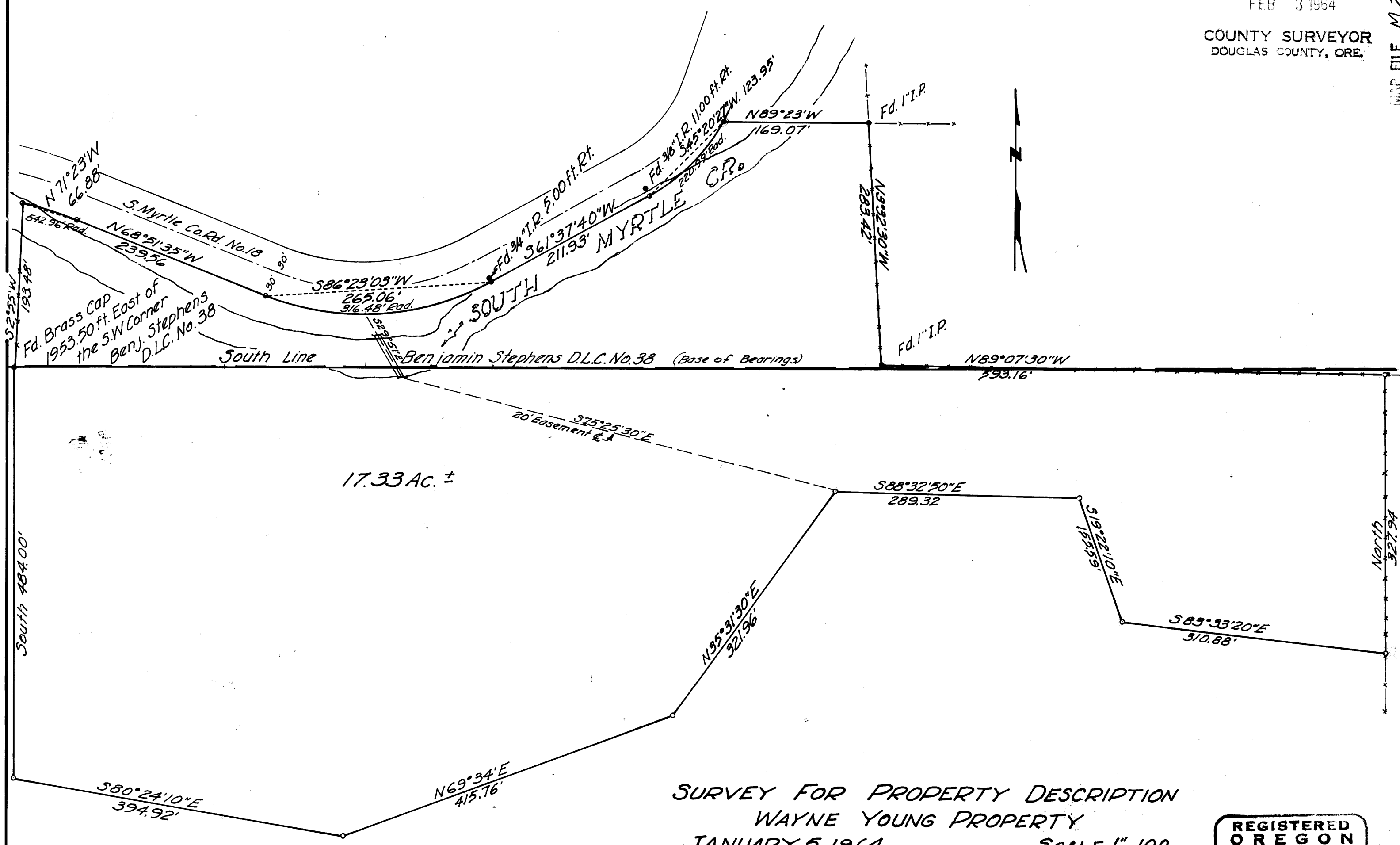
SECTION 22, T.29S., R.4W.W.M.

FILED *L.L.*  
RECEIVED

FEB 3 1964

COUNTY SURVEYOR  
DOUGLAS COUNTY, ORE.

MAP FILE M 277 27 P



17.33 AC. ±

SURVEY FOR PROPERTY DESCRIPTION  
WAYNE YOUNG PROPERTY  
JANUARY 5, 1964

SCALE 1"=100

- Monuments Found
- Monuments Set 1/2" I.P.
- R/W Points

COUNTY SURVEYORS FILE DATA  
DO NOT REMOVE FROM OFFICE

REGISTERED  
OREGON  
LAND SURVEYOR

*Glenn S. Baughman*  
JULY 14, 1961  
GLENN S. BAUGHMAN  
536

M 277-27