

West 3274.9

M 27-21

83.29 Ac.

10.00 Ac.

12.58 Ac.

11.95 Ac.

COUNTY SURVEYORS FILE DATA
DO NOT REMOVE FROM OFFICE

COUNTY SURVEYOR'S OFFICE
DOUGLAS COUNTY, OREGON
Survey for
Frank Fuller
Part of Wm. W. Judd D.L.C. No. 31 #51
Section 13, T. 30 S., R. 6 W. W.M.
Geo. J. Wenderoth, Surveyor Nov. 15, 1948
Scale 1" = 200 ft.

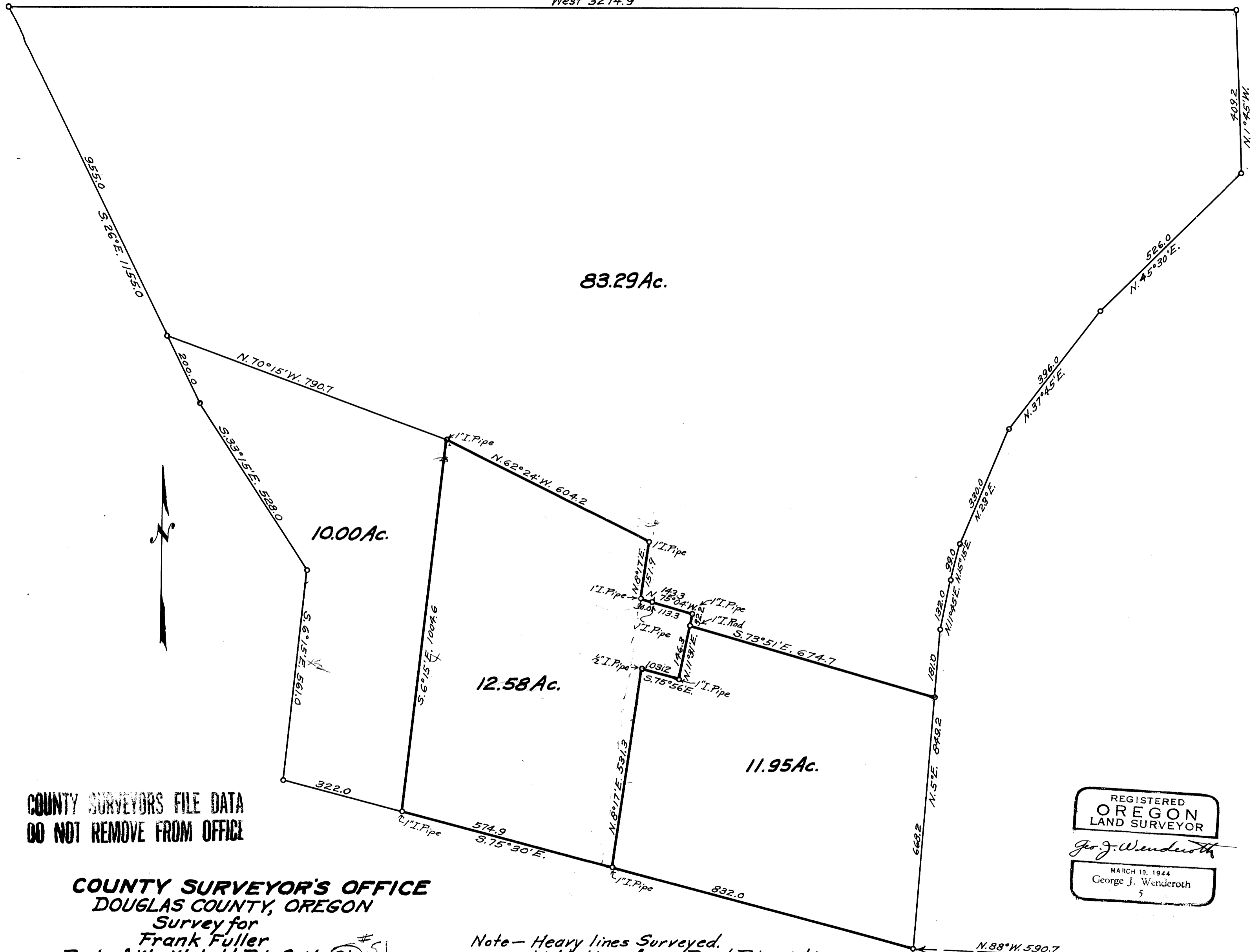
Note - Heavy lines Surveyed.
Light lines from Deed Descriptions.

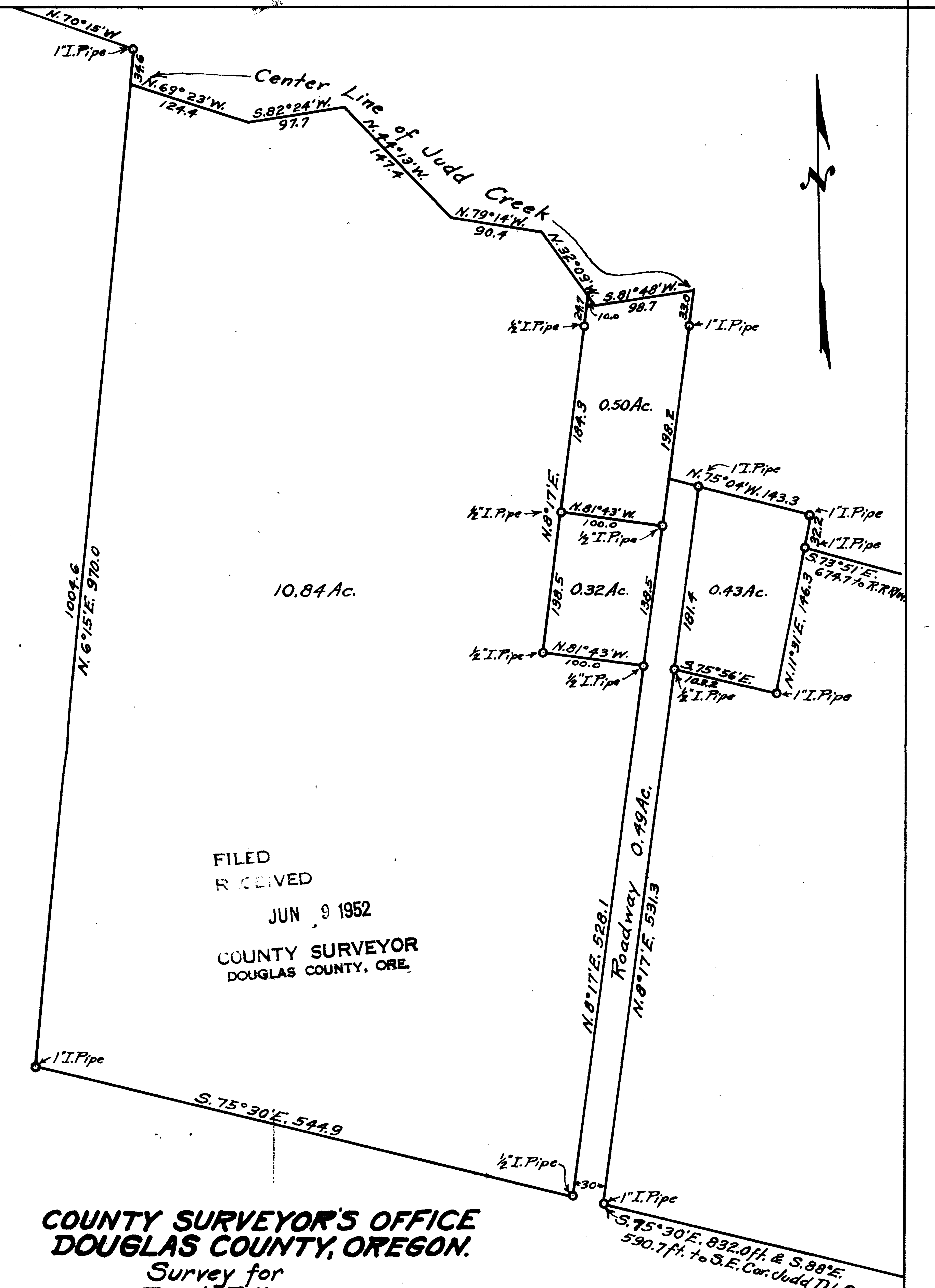
REGISTERED
OREGON
LAND SURVEYOR
Geo. J. Wenderoth
MARCH 10, 1944
George J. Wenderoth
5

N. 88° W. 590.7
S.E. Corner of
Wm. W. Judd D.L.C. #31

51

U.S. FILE 40 249





FILED
 RECEIVED
 JUN 9 1952
 COUNTY SURVEYOR
 DOUGLAS COUNTY, ORE.

**COUNTY SURVEYOR'S OFFICE
 DOUGLAS COUNTY, OREGON.**

Survey for
 Frank Fuller
 Part of Wm. Judd D.L.C. No. 31² 51
 Section 13, T. 30S., R. 6W., W.M.
 Geo. J. Wenderoth, Deputy. Nov. 1950
 Scale 1"=100ft.

REGISTERED
 OREGON
 LAND SURVEYOR

Geo. J. Wenderoth

MARCH 10, 1944
 George J. Wenderoth
 5

**COUNTY SURVEYORS FILE DATA
 DO NOT REMOVE FROM OFFICE**

CS FILE FOLDER

CONTAINS

MORE

INFORMATION