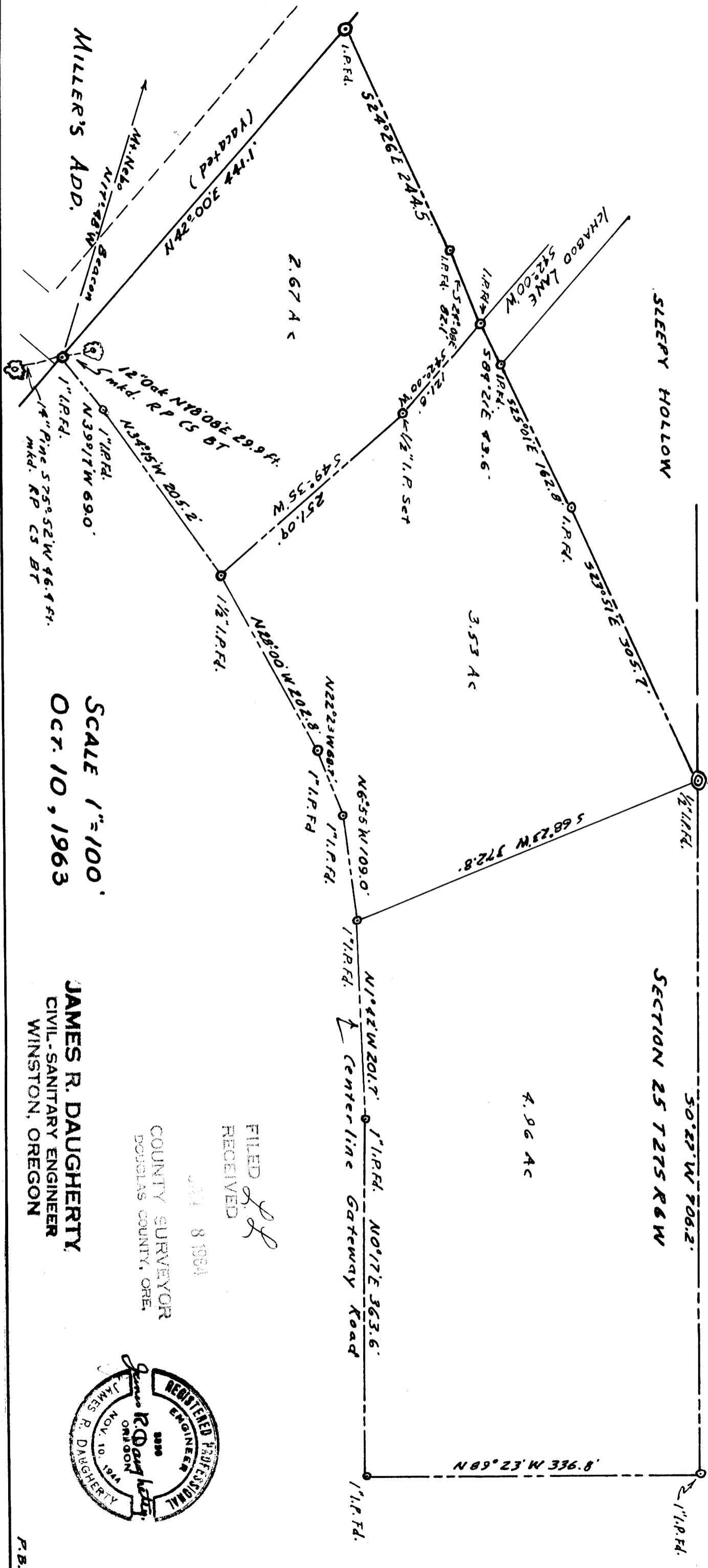


COUNTY SURVEYORS FILE DATA
DO NOT REMOVE FROM OFFICE
 CONTRERAS PARCELS
 DOUGLAS COUNTY, ORE.
 Sect. 25 T27S R6W.M.

L B ATTERBURY

SLEEPY HOLLOW
 SECTION 30 T27S R5 W
 SECTION 25 T27S R6 W



2.67 AC

3.53 AC

4.96 AC

SCALE 1"=100'
 OCT. 10, 1963

JAMES R. DAUGHERTY
 CIVIL-SANITARY ENGINEER
 WINSTON, OREGON

COUNTY SURVEYOR
 DOUGLAS COUNTY, ORE.

FILED
 RECEIVED
 OCT 8 1964

