

REGISTERED
OREGON
LAND SURVEYOR

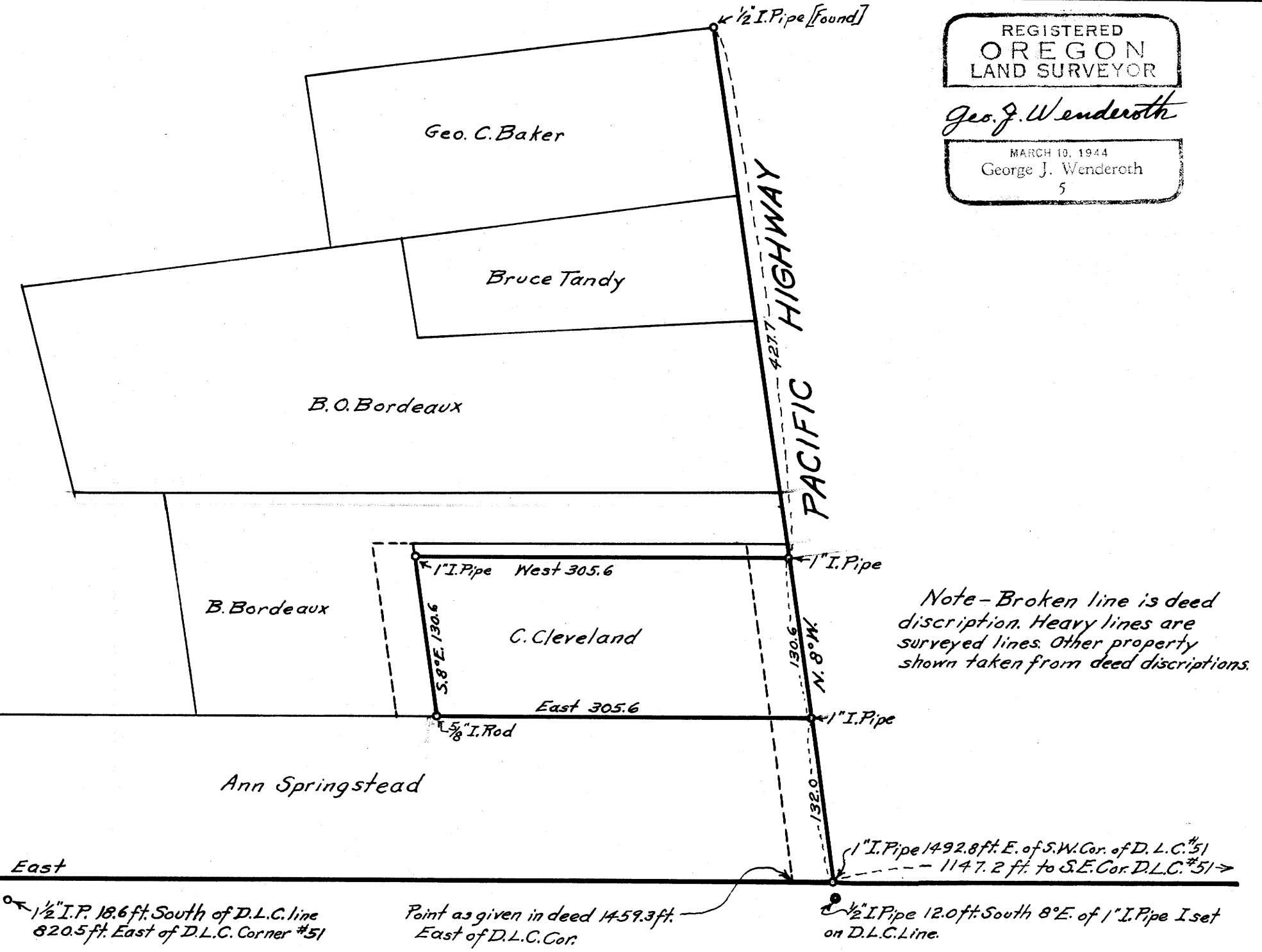
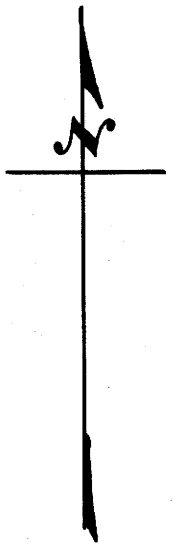
Geo. J. Wenderoth

MARCH 10, 1944
George J. Wenderoth
5

COUNTY SURVEYORS FILE
DO NOT REMOVE FROM OFFICE

COUNTY SURVEYOR'S OFFICE
DOUGLAS COUNTY, OREGON.

Survey for
Clinton Cleveland
Section 27, T. 30 S., R. 5 W., W.M.
in City of Canyonville
May, 1949 Scale 1"=100ft.
Geo. J. Wenderoth, Deputy Co. Surveyor.



Note - Broken line is deed description. Heavy lines are surveyed lines. Other property shown taken from deed descriptions.

S.W. Corner J. Clark D.L.C. #51
1/4" Iron Pipe
26" Fir N. 68° 30' E. 27.3
12" Fir S. 10° 22' E. 34.5

148.5
1/2" I.P. 12ft. South of Corner. [Found]

N.W. Corner J. Roberts D.L.C. #59
1" Iron Bolt
14" Fir N. 4° 30' E. 41.1
12" Madrone S. 80° 30' W. 18.0

1/2" I.P. 18.6 ft. South of D.L.C. line
820.5 ft. East of D.L.C. Corner #51

Point as given in deed 1459.3 ft.
East of D.L.C. Cor.

1" I. Pipe 1492.8 ft. E. of S.W. Cor. of D.L.C. #51
1147.2 ft. to S.E. Cor. D.L.C. #51
1/2" I. Pipe 12.0 ft. South 8° E. of 1" I. Pipe I set on D.L.C. Line.