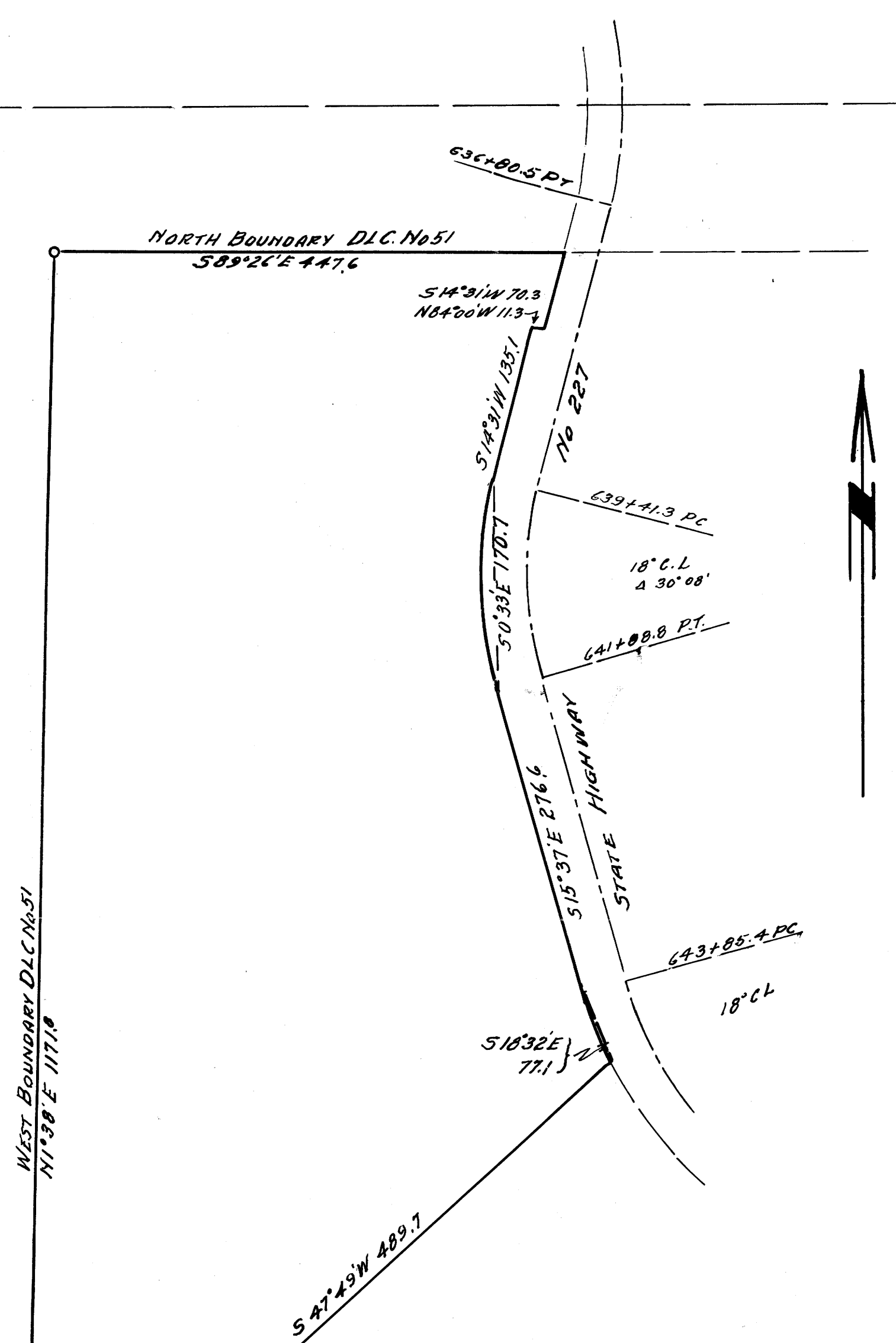


23 24
26 25



COUNTY SURVEYOR'S OFFICE
DOUGLAS COUNTY OREGON

TRACT retained by J. D. WRIGHT
DLC No. 51 - Sec. 25 T30S., R4W., W.M.

BEN. B. IRVING COUNTY SURVEYOR
Surveyed MARCH 29 1946
N.E. RICHARDSON Deputy County Surveyor
SCALE 1" = 100'

COUNTY SURVEYORS FILE UNIT
DO NOT REMOVE FROM OFFICE

REGISTERED
OREGON
LAND SURVEYOR

N.E. Richardson
JULY 7, 1944
N. E. RICHARDSON
95