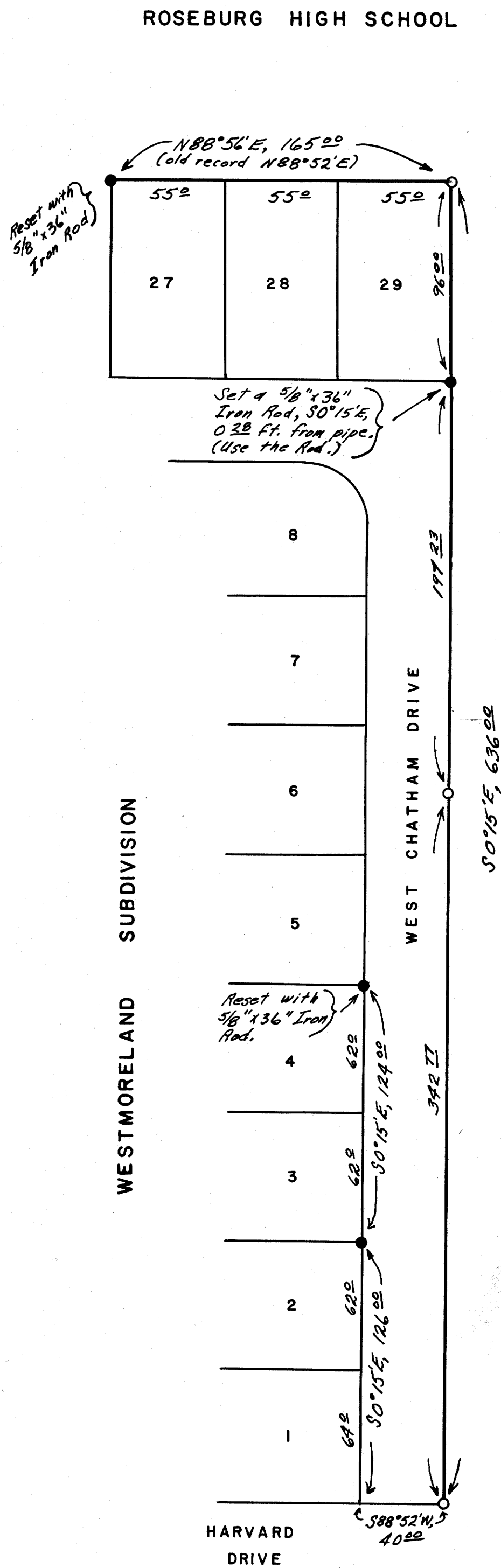


COUNTY SURVEYORS FILE NO. 70 NOT REMOVE FROM SET

PROPERTY LINE SURVEY OF A PORTION OF THE BOUNDARY BETWEEN ROSEBURG HIGH SCHOOL & WESTMORELAND SUBDIVISION IN JEREMIAH HUNTLEY D.L.C. 56 IN THE SE 1/4 OF SECTION 13, T27S, R6W, W.M. FOR SCHOOL DISTRICT NO. 4, DOUGLAS COUNTY, OREGON



N

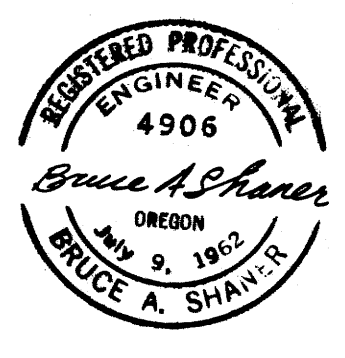
↑

Bearings taken from east line of Westmoreland Subdivision.

LEGEND

- Corner Found (1/2" x 30" Iron Pipe)
- Corner Set (5/8" x 36" Iron Rod)

Scale: 1 inch = 50 feet



Surveyed Nov., 1963

FILED *L.L.*
RECEIVED
DEC 9 1963
COUNTY SURVEYOR
DOUGLAS COUNTY, ORE.