

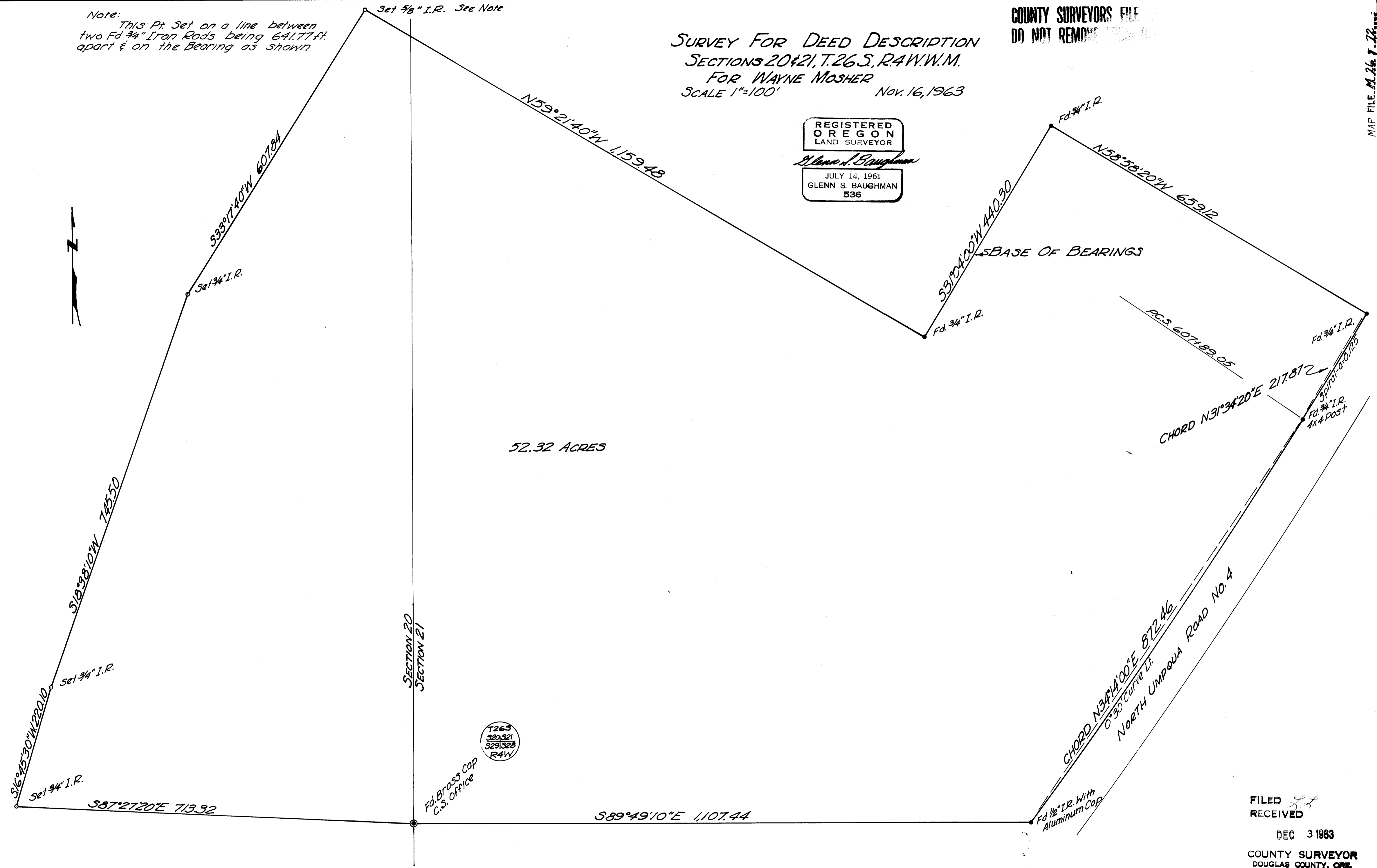
COUNTY SURVEYORS FILE
DO NOT REMOVE

MAP FILE M. 26-72

Note: This Pt Set on a line between two Fd 3/4" Iron Rods being 641.77 ft. apart & on the Bearing as shown

SURVEY FOR DEED DESCRIPTION
SECTIONS 20 & 21, T. 26 S., R. 4 W., W. M.
FOR WAYNE MOSHER
SCALE 1"=100' Nov. 16, 1963

REGISTERED
OREGON
LAND SURVEYOR
Glenn S. Baughman
JULY 14, 1961
GLENN S. BAUGHMAN
536



52.32 ACRES

SECTION 20
SECTION 21

T26S
R4W
S20, S21
S29, S28

Fd. Brass COP
C.S. Office

FILED *LL*
RECEIVED
DEC 3 1963
COUNTY SURVEYOR
DOUGLAS COUNTY, ORE.

M. 26-72