

REGISTERED  
**OREGON**  
 LAND SURVEYOR  
*Wilford N. Haines*  
 MAY 7, 1948  
 WILFORD N. HAINES  
 239

COUNTY SURVEYORS FILE UP  
 DO NOT REMOVE FROM OFFICE

SURVEY FOR DEED DESCRIPTION  
 SW 1/4 SW 1/4 SECT. 33, T21S. R5W W.M. +  
 NW 1/4 NW 1/4 SECT. 4, T22S., R5W.W.M.  
 for

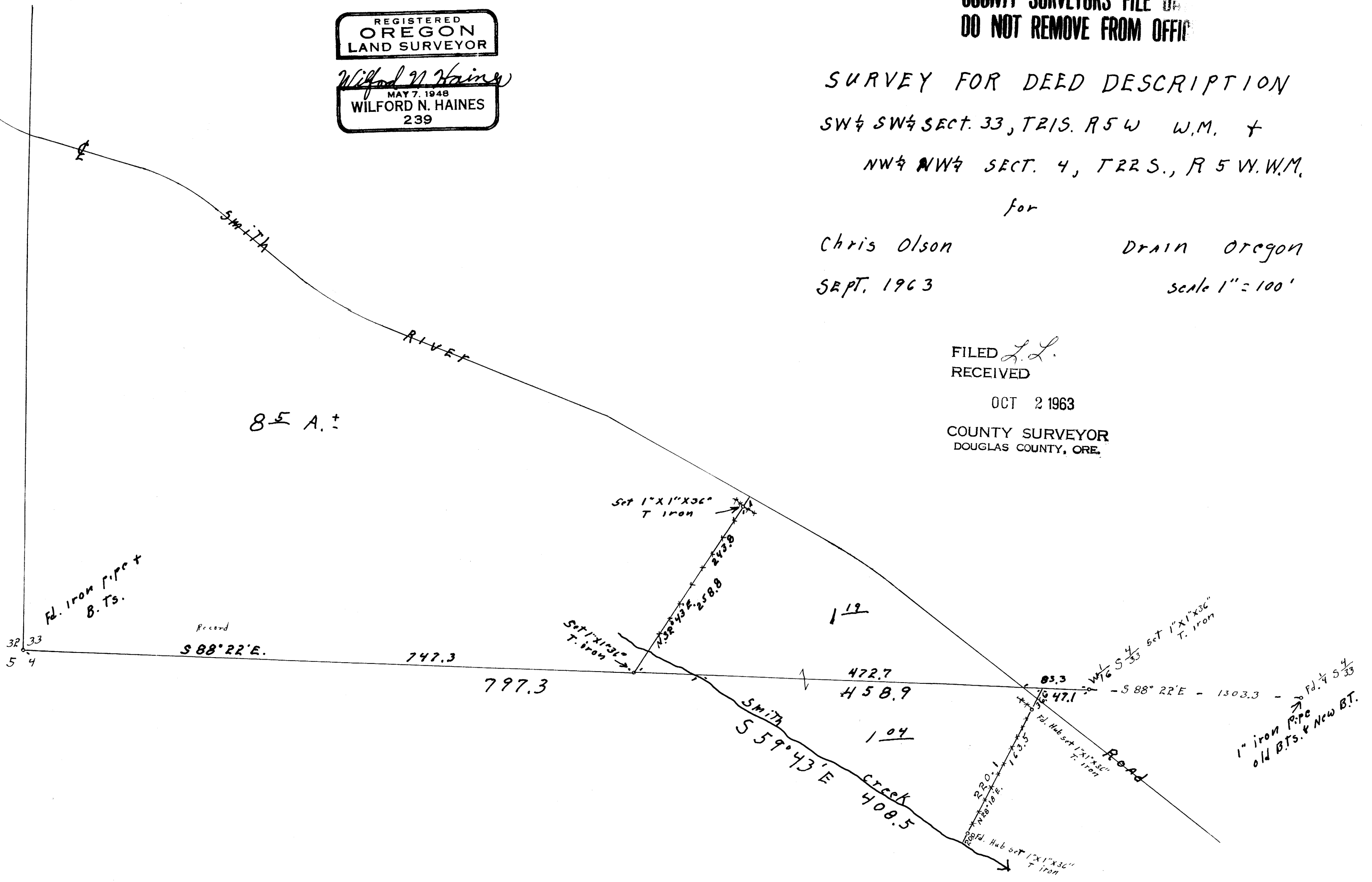
Chris Olson  
 SEPT. 1963  
 DRAIN OREGON  
 scale 1" = 100'

FILED *L.L.*  
 RECEIVED

OCT 2 1963

COUNTY SURVEYOR  
 DOUGLAS COUNTY, ORE.

85 A.±



FILE M.26-T-60

M 26-60

5