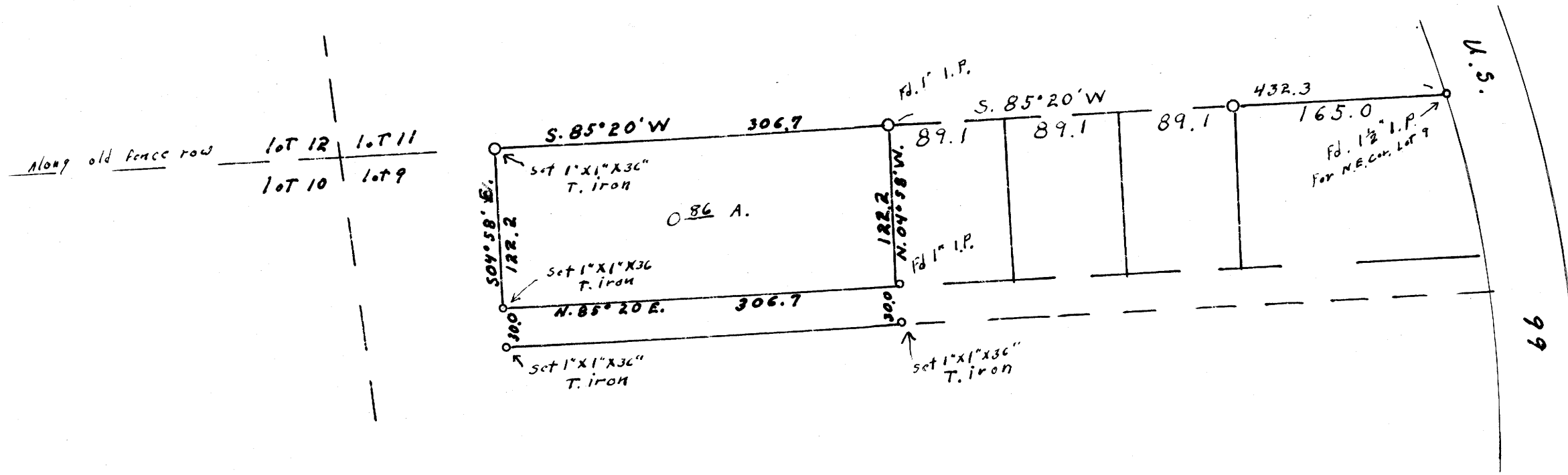


REGISTERED
OREGON
 LAND SURVEYOR
Wilford N. Haines
 MAY 7, 1948
 WILFORD N. HAINES
 239

SURVEY FOR DEED DESCRIPTION
 SECTION 3 T.23S, R.5W, WM.
 Lot 9 Block 1 DEVORE'S ADDITION
 TO
 YONCALIA OREGON
 SEPT. 1963 SCALE 1" = 100'

COUNTY SURVEYORS FILE DRAWING
 DO NOT REMOVE FROM OFFICE



FILED *L.L.*
 RECEIVED
 OCT 2 1963
 COUNTY SURVEYOR
 DOUGLAS COUNTY, ORE.

FILE M 26 T. 59

M 26-59