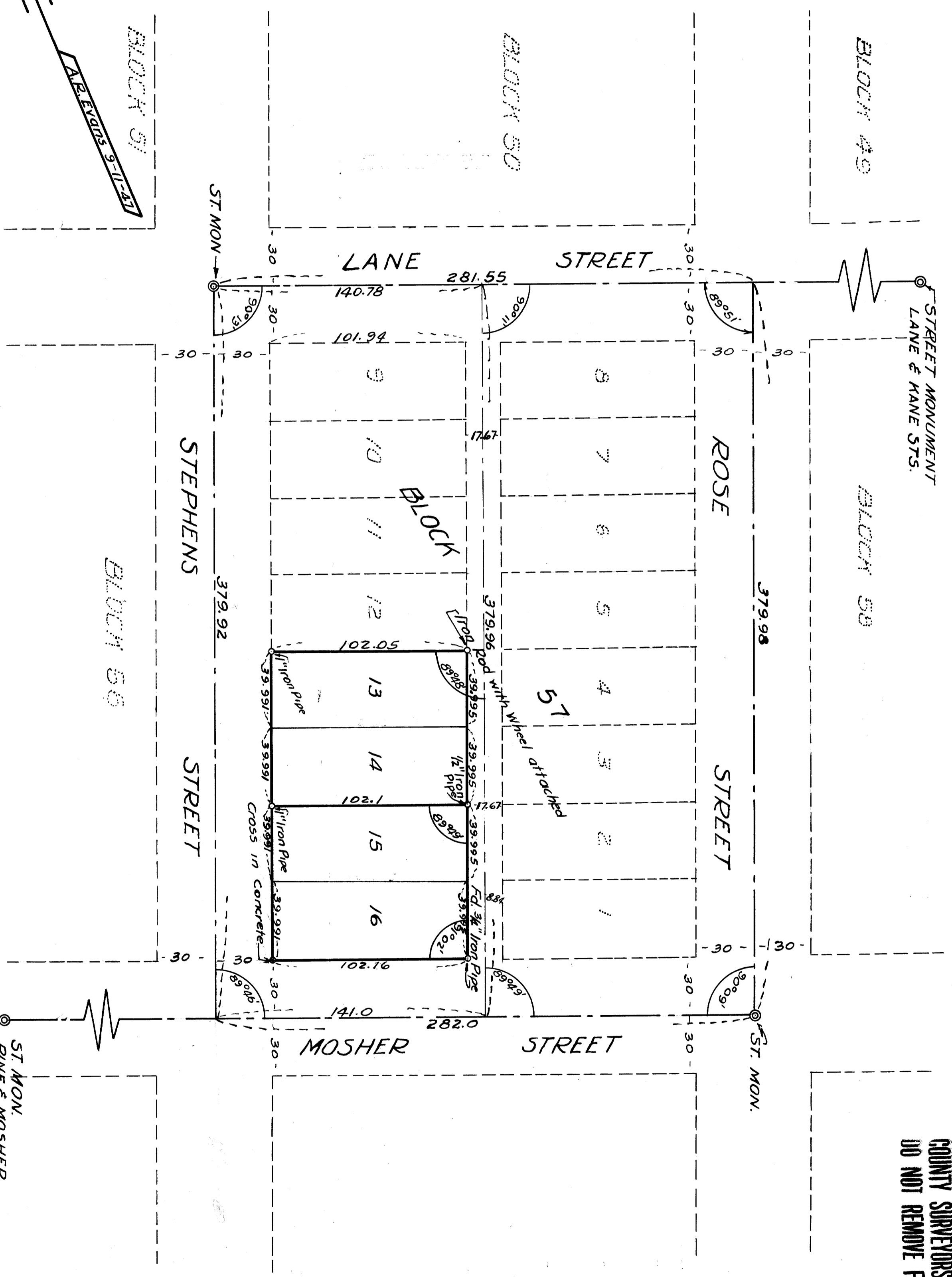
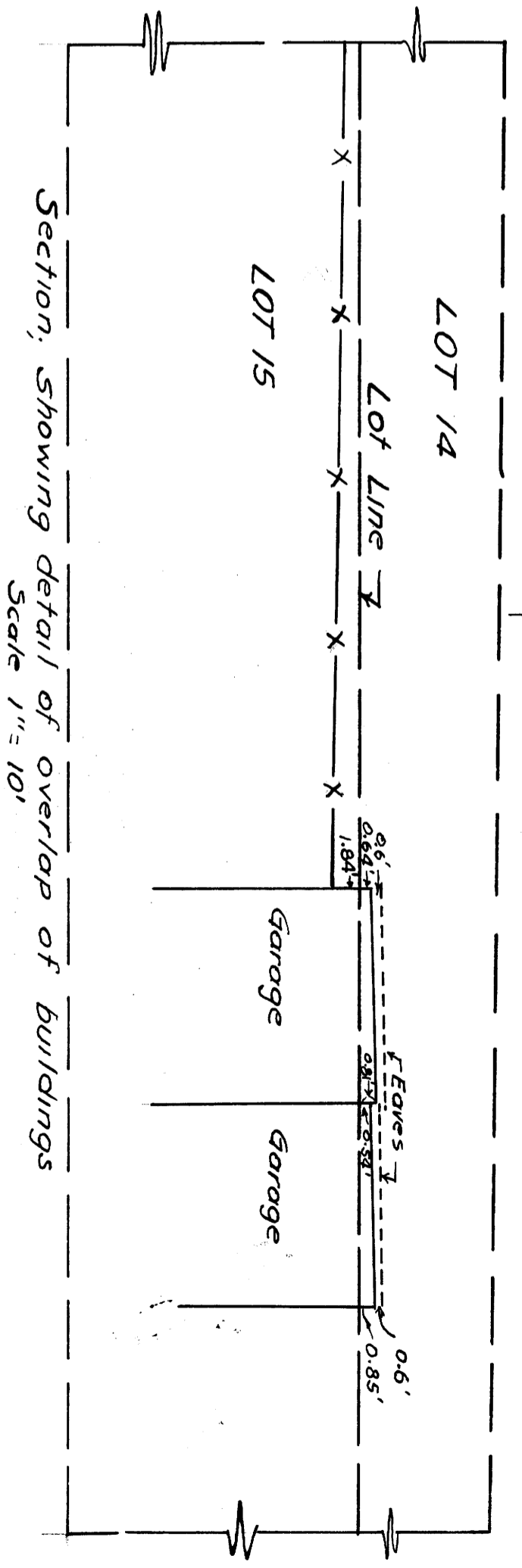
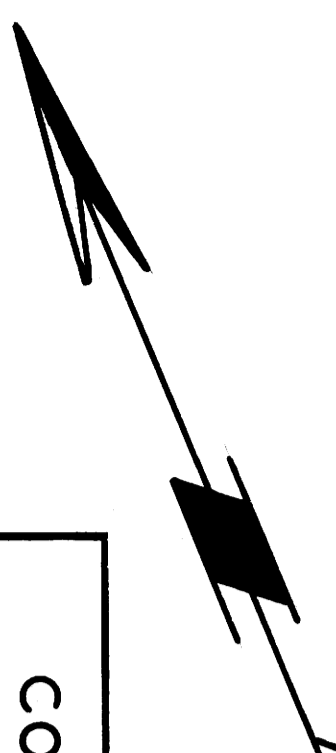
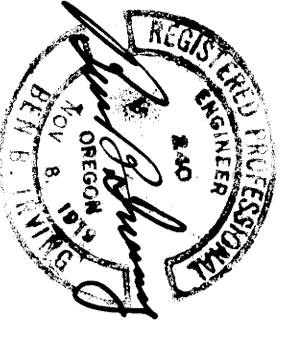


COUNTY SURVEYORS FILE DATA
DO NOT REMOVE FROM OFFICE



COUNTY SURVEYOR'S OFFICE
DOUGLAS COUNTY OREGON
SURVEY OF LOTS 13,14,15,& 16
BLOCK 57,RAILROAD ADDITION
TO ROSEBURG OREGON
BEN BIRVING COUNTY SURVEYOR
SURVEYED, SEPTEMBER 2-3, 1947
SCALE 1"=40'



Section, showing detail of overlap of buildings
Scale 1"=10'