

COUNTY SURVEYORS FILE OUT
DO NOT REMOVE FROM OFFICE

A PORTION OF LOTS 8 & 9 SEC. 12 T 27 S R 3 W W.M.

Surveyed for Harold Dobbs
Surveyor Don Garrett

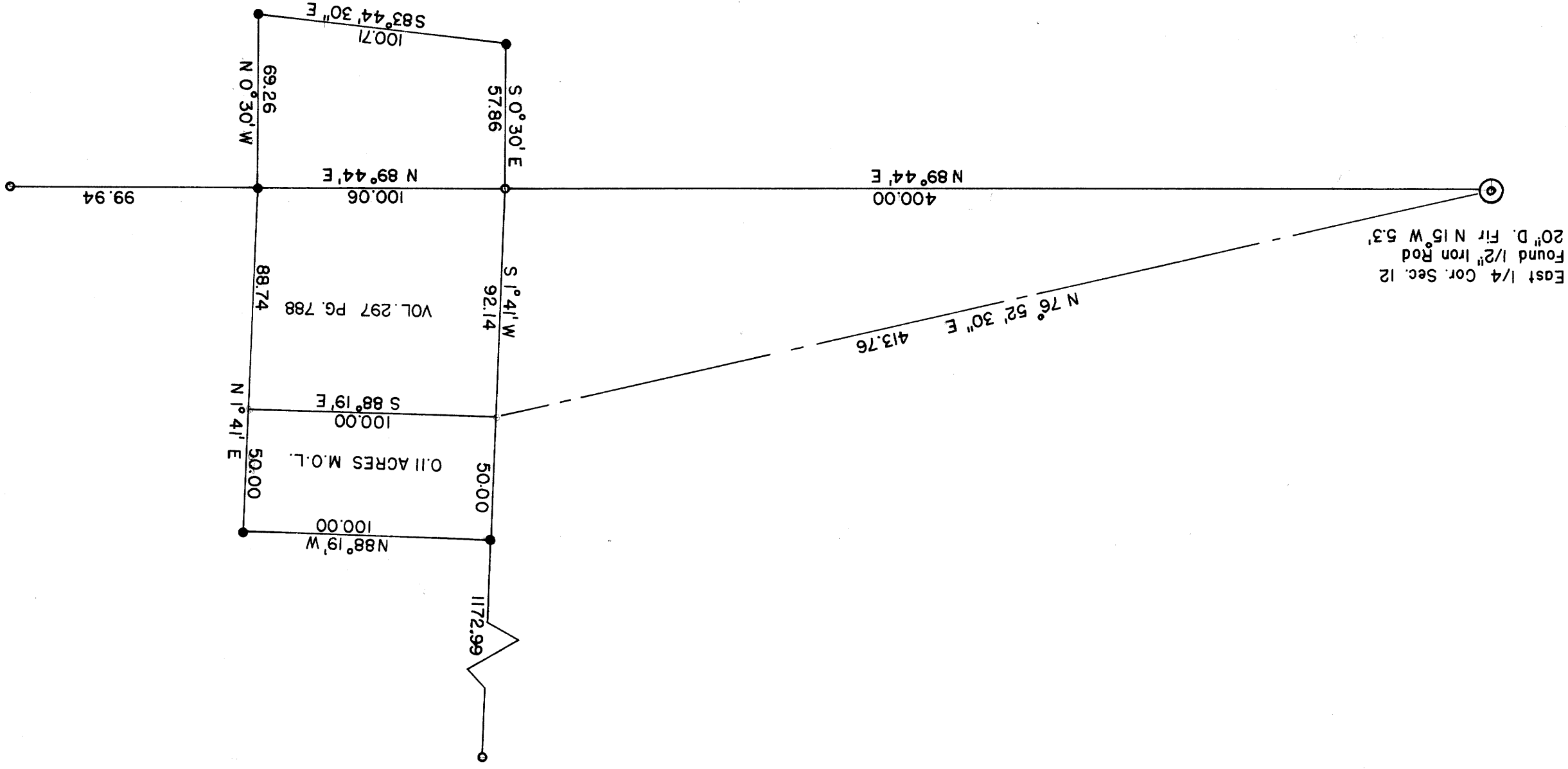
Aug. 24, 1963

Scale 1" = 50'

● - Set 5/8" Iron Rod
○ - Found 3/4" Iron Rod

Bearings are based on the North line of Lot 9 N 89° 44' E

REGISTERED
OREGON
LAND SURVEYOR
Don E. Garrett
JULY 14, 1961
DON E. GARRETT
544



North

FILED
RECEIVED
Don E. Garrett

AUG 26 1963

COUNTY SURVEYOR
DOUGLAS COUNTY, ORE.

M 26-40

MAP FILE M 26-40