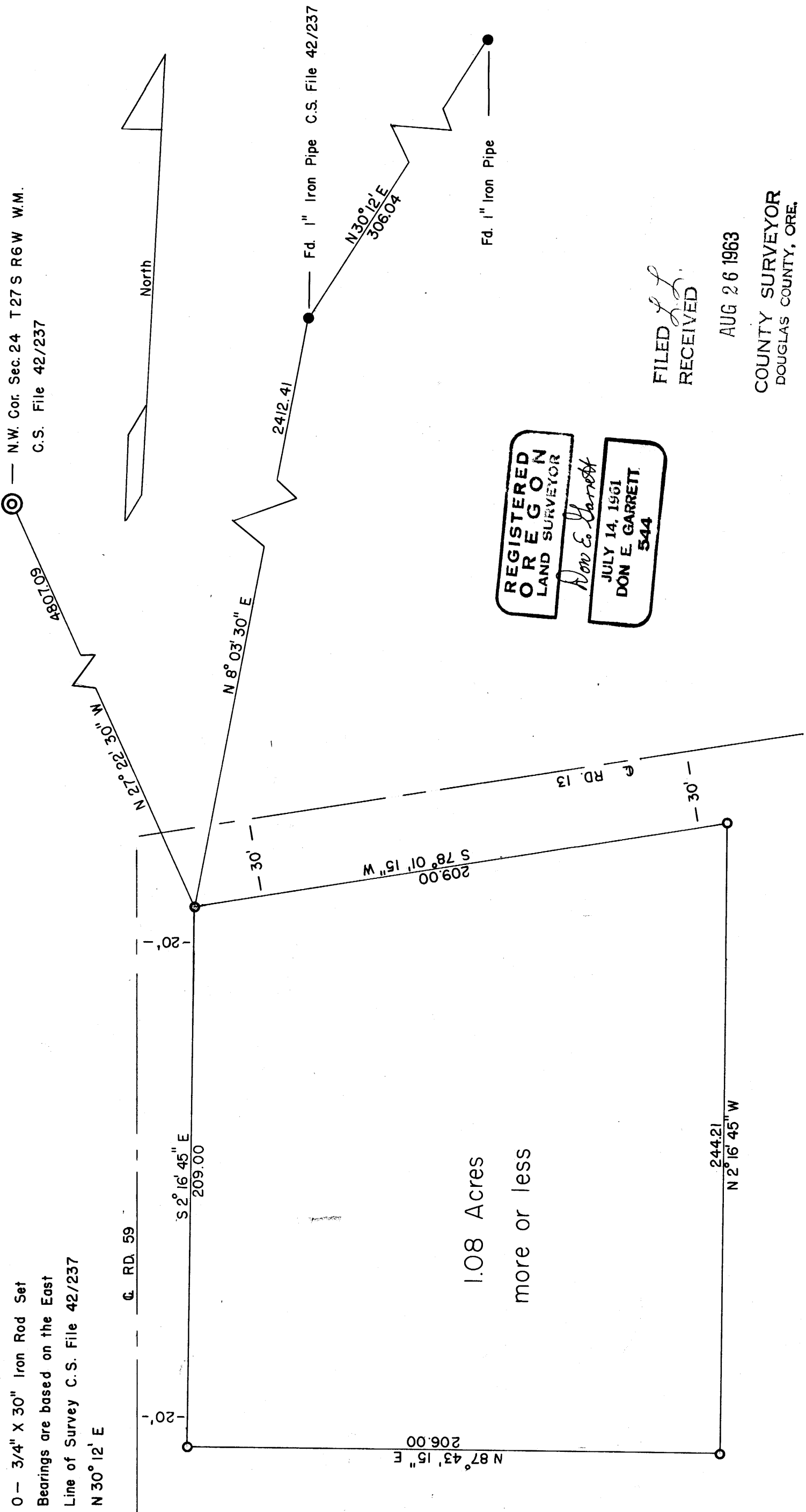


COUNTY SURVEYORS FILE  
DO NOT REMOVE FROM OFF

SE 1/4 SW 1/4 SEC. 24 T 26 S R 7 W W.M.

Surveyed for Roy Nelson  
Surveyor Don Garrett  
July 27, 1963  
Scale 1" = 40'

0 - 3/4" X 30" Iron Rod Set  
Bearings are based on the East  
Line of Survey C.S. File 42/237  
N 30° 12' E



REGISTERED  
OREGON  
LAND SURVEYOR

*Don E. Garrett*

JULY 14, 1961  
DON E. GARRETT  
544

FILED  
RECEIVED

AUG 26 1963

COUNTY SURVEYOR  
DOUGLAS COUNTY, ORE.