

**COUNTY SURVEYORS HILL
DO NOT REMOVE FROM OFFICE**

A PORTION OF LOTS 8 & 9 SEC. 12 T27S R3W W.M.

Surveyed for Ruth Damewood & Tom Rondeau

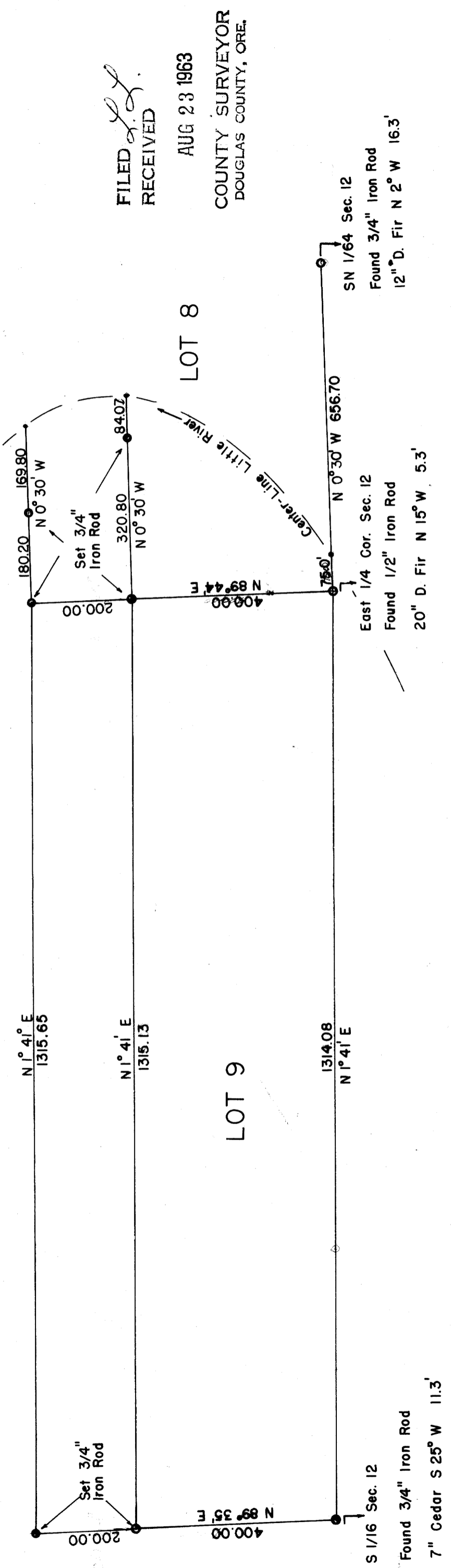
Surveyor Don Garrett

Aug. 10, 1963

Note. Bearings are based on the East line of Sec. 12 N 0° 30' W

SCALE 1" = 200'

REGISTERED
OREGON
LAND SURVEYOR
Don E. Garrett
JULY 14, 1961
DON E. GARRETT
544



FILED *L.L.*
RECEIVED
AUG 23 1963
COUNTY SURVEYOR
DOUGLAS COUNTY, ORE.

LOT 8

LOT 9