

COUNTY SURVEYOR FILE
DO NOT REMOVE FROM OFFICE

LOT 4 SEC. 31 T 32 S R 6 W W.M.

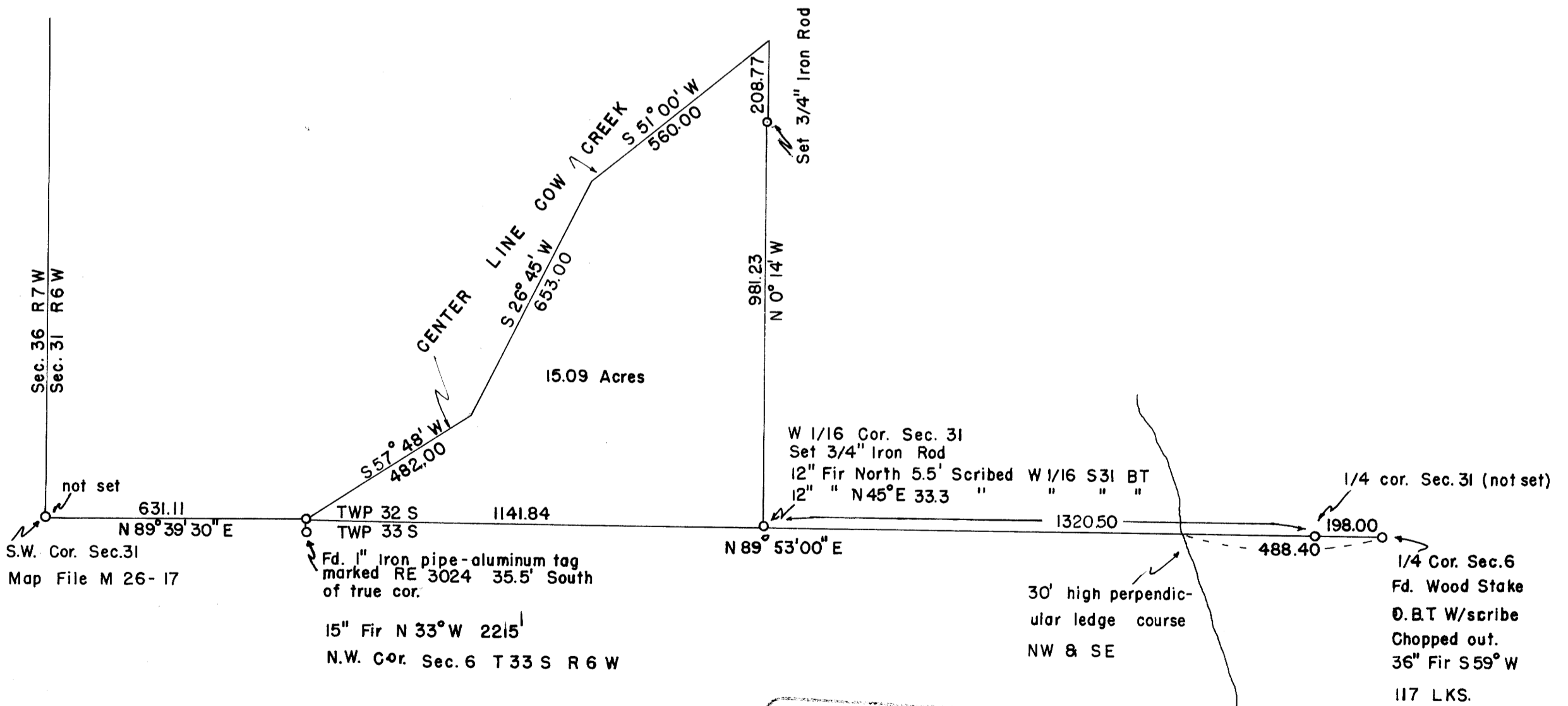
SURVEYED FOR EUGENE RITTER

SURVEYED BY DON GARRETT

AUGUST 3, 1963

SCALE 1" = 300'

NOTE. Bearings are based on the South line of Sec. 31 N 89° 53' E



REGISTERED
OREGON
LAND SURVEYOR

Don E. Garrett

JULY 14, 1961
DON E. GARRETT
544

FILED *L.L.*
RECEIVED
AUG 9 1963

COUNTY SURVEYOR
DOUGLAS COUNTY, ORE.