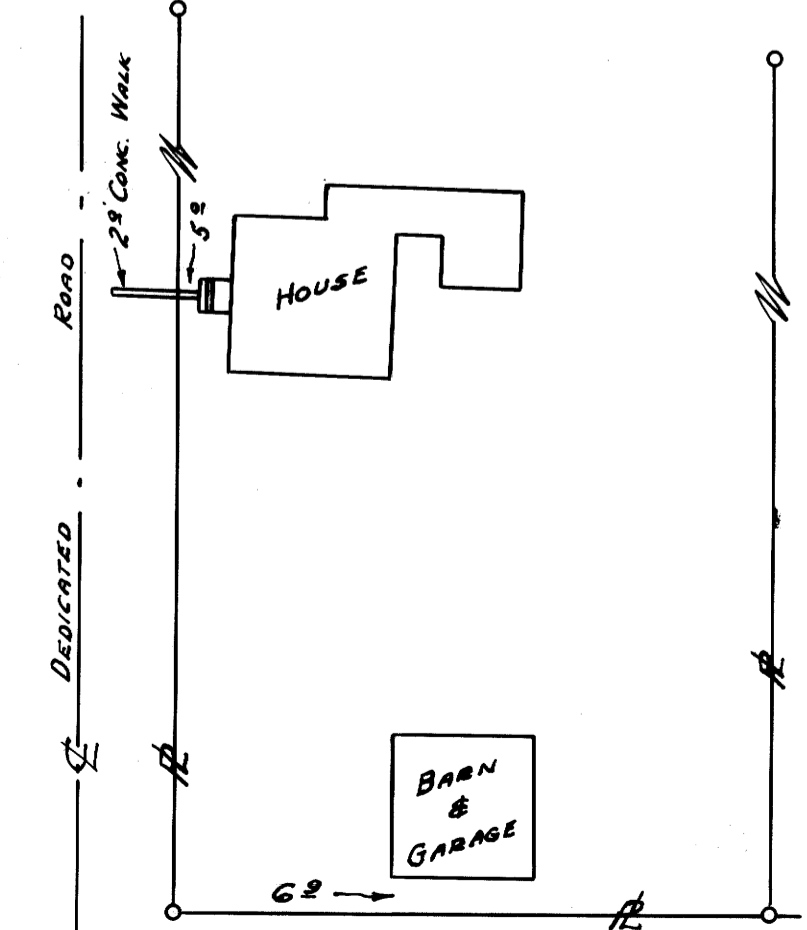


NOTE: BEARINGS BASED ON S 88° 26' 30" E, ALONG THE PHYSICAL OF COUNTY ROAD 208. THE E OF COUNTY ROAD 208 & 191 ARE BASED ON THE PHYSICALS.



I, FRED M. DARBY, DO HEREBY CERTIFY THAT THE IMPROVEMENTS SHOWN HERE-ON ARE AS LOCATED BY A SURVEY MADE BY THIS OFFICE, AND ARE ENTIRELY WITHIN THE PROPERTY LINES, EXCEPT A PORTION OF CONCRETE WALK AS SHOWN

8/13/63

Fred M. Darby
COUNTY SURVEYOR

REGISTERED
OREGON
LAND SURVEYOR
Fred M. Darby
MAY 7, 1954
FRED M. DARBY
320

COUNTY SURVEYOR'S OFFICE
DOUGLAS COUNTY, OREGON

SURVEY FOR DEED DESCRIPTION,
IN LOT 5, BLOCK 5, R. H. O. TR.
SECTION 19, T.26S., R.6 W., W. M.

FRED M. DARBY COUNTY SURVEYOR
SURVEYED JULY 17, 1963 BY
JAMES W. BYRON - DEPUTY SCALE 1" = 200'
SURVEYED FOR SIG MADSON

REGISTERED
OREGON
LAND SURVEYOR
James W. Byron
NOV 5 1962
JAMES W. BYRON
303

COUNTY SURVEYORS FILE DA
DO NOT REMOVE FROM OFF