

COUNTY SURVEYORS FILE
DO NOT REMOVE FROM OFFICE

MAP FILE M 26-28

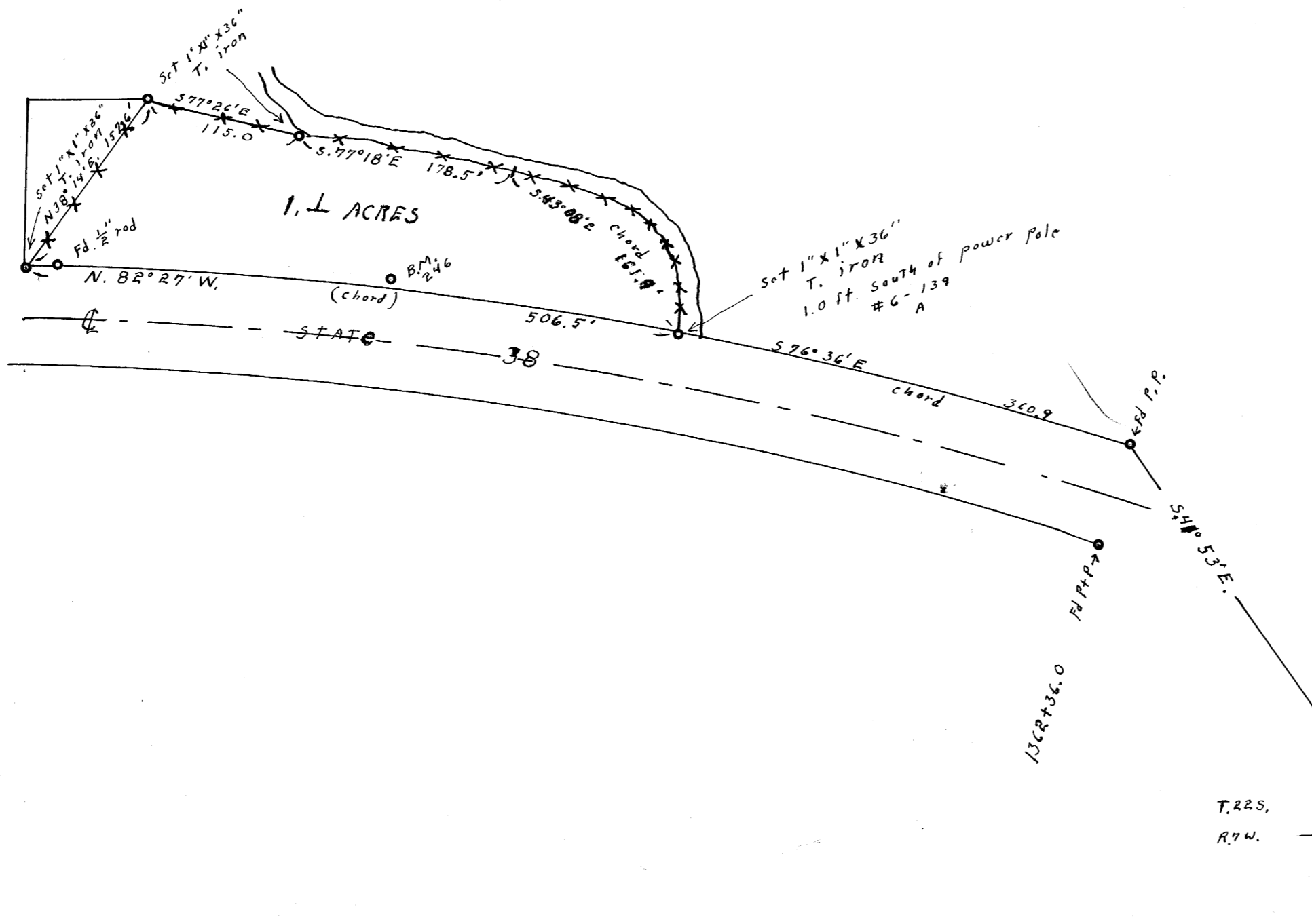
SURVEY FOR DEED DESCRIPTION
SECT. 12, T.22S., R.7W.

Scale 1" = 100'

July 1963

For
TED. COLLEY

ELKTON, ORE.



REGISTERED
OREGON
LAND SURVEYOR
Wilford N. Haines
MAY 7, 1948
WILFORD N. HAINES
239

FILED *L.L.*
RECEIVED

JUL 26 1963

COUNTY SURVEYOR
DOUGLAS COUNTY, ORE.

T.22S.	12	7	T.22S.
R.7W.	13	18	R.7W.

M 26-28