

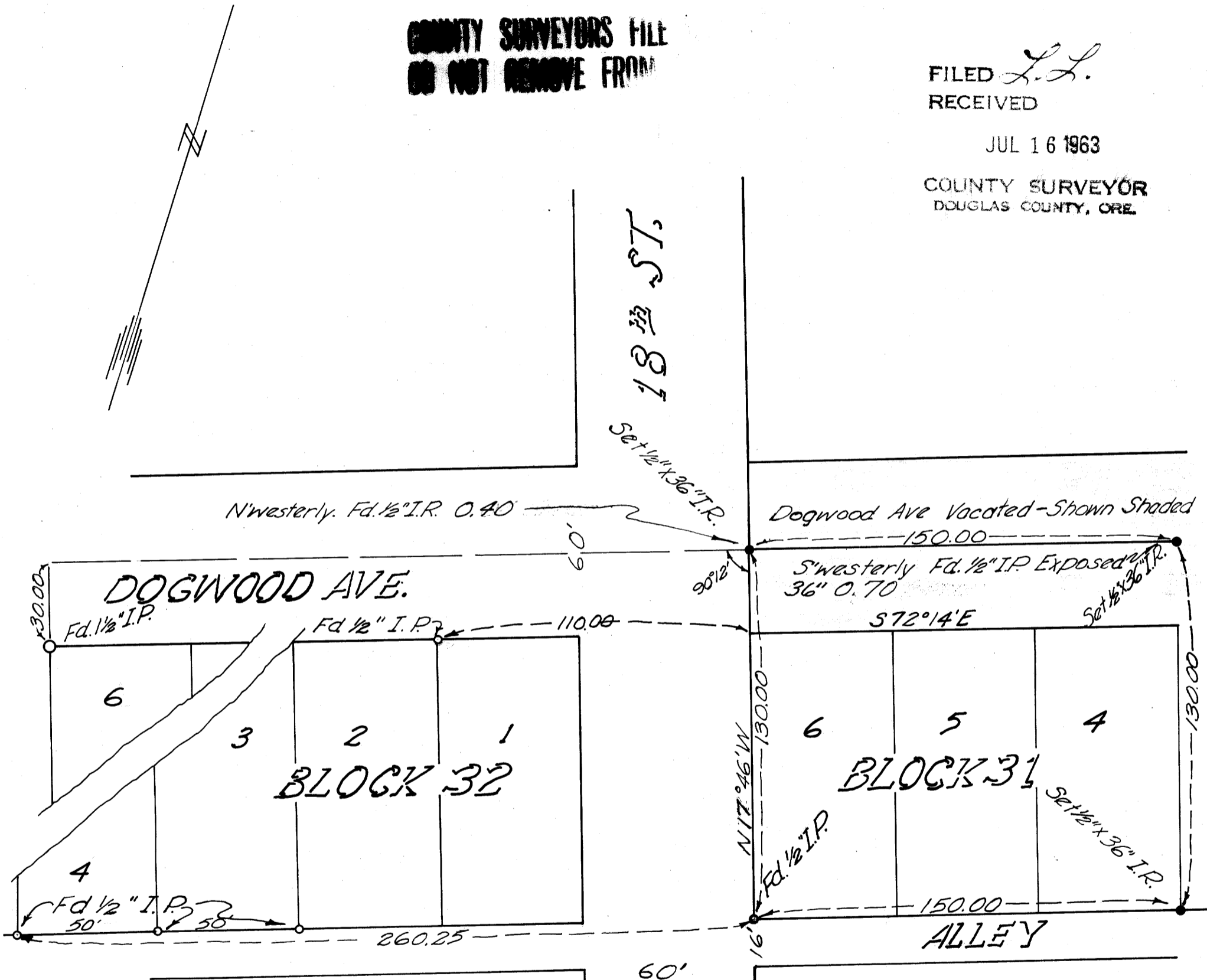
SURVEY TO ESTABLISH CORNERS
SECTION 3, T.22S., R.12W., W.M
BLOCK 31, LOTS 4, 5 & 6
TOWNSITE OF REEDSPORT
JULY 13, 1963
FOR DOUGLAS ELECTRIC COOPERATIVE

COUNTY SURVEYORS FILE
DO NOT REMOVE FROM

FILED *L.L.*
 RECEIVED

JUL 16 1963

COUNTY SURVEYOR
 DOUGLAS COUNTY, ORE.



*Base of Bearings Plat of Reedsport
 Controlled along Alley by Fd. Pipes*

REGISTERED
 OREGON
 LAND SURVEYOR

Glenn S. Baughman

JULY 14, 1961
 GLENN S. BAUGHMAN
 536