

COUNTY SURVEYORS FILE
DO NOT REMOVE FROM

SURVEY IN SEC. 31 T 32 S R 6 W W.M.

Surveyed for Holly Hough

Surveyed by Don Garrett

July 5, 1963

Scale 1" = 300'

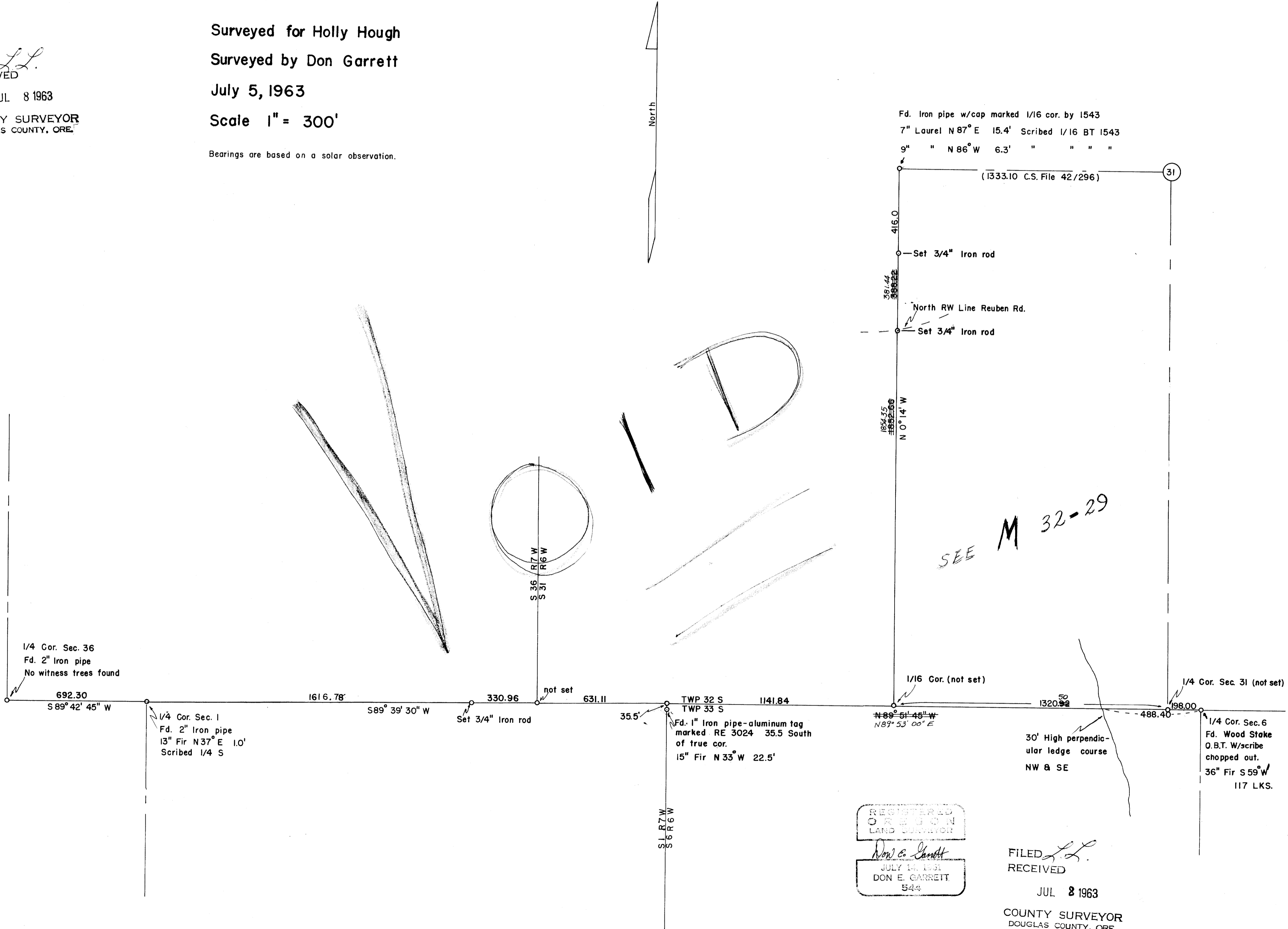
Bearings are based on a solar observation.

FILED *LL*
RECEIVED

JUL 8 1963

COUNTY SURVEYOR
DOUGLAS COUNTY, ORE.

North



REGISTERED
OREGON
LAND SURVEYOR
Don E. Garrett
JULY 14, 1961
DON E. GARRETT
544

FILED *LL*
RECEIVED

JUL 8 1963

COUNTY SURVEYOR
DOUGLAS COUNTY, ORE.

MAP FILE M 26-17

M 26-17