

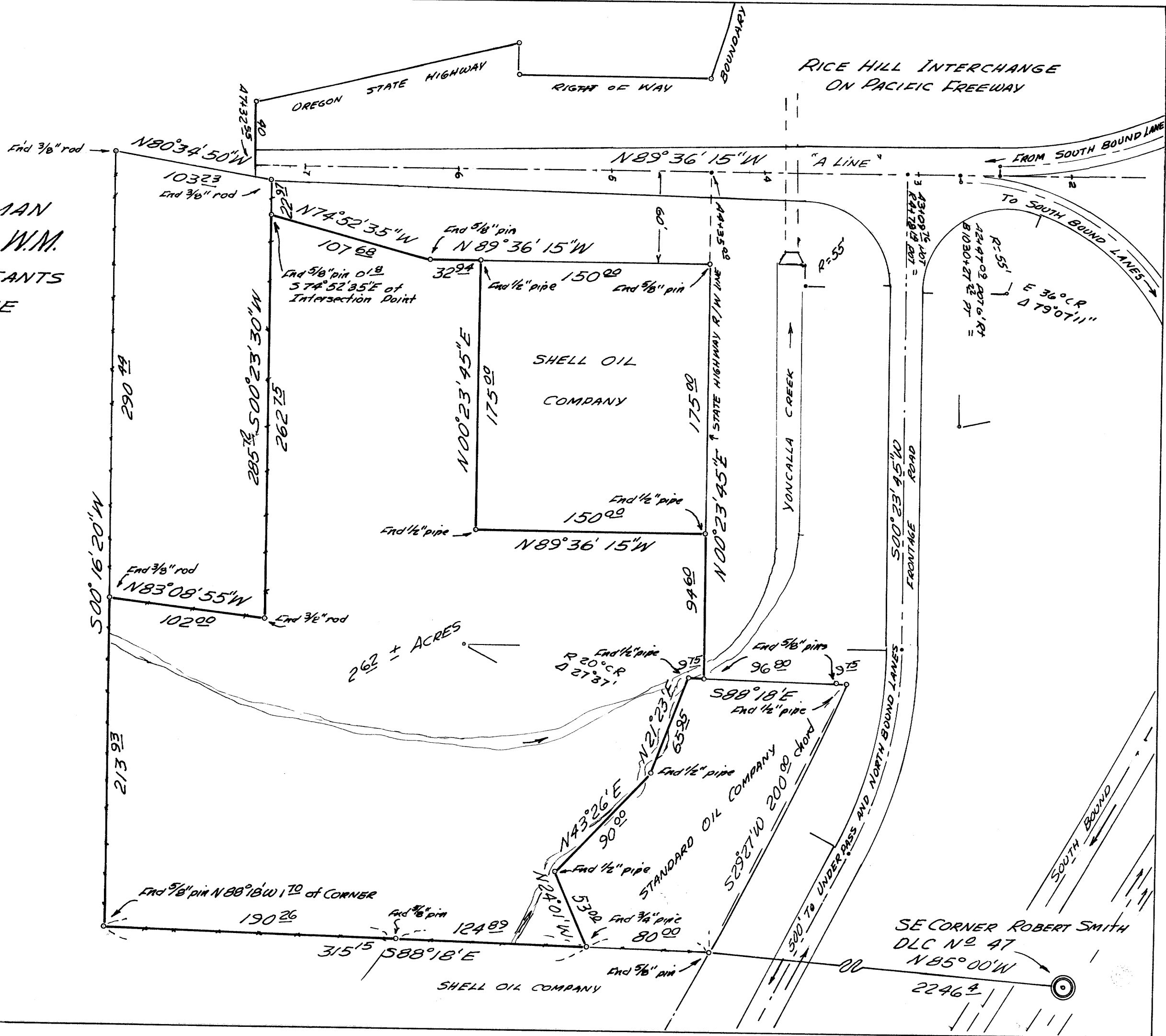
COUNTY SURVEYORS FILE DATA  
DO NOT REMOVE FROM OFFICE

SURVEY FOR R.B. HARRYMAN  
SECTION 28 T23S, R5W, W.M.  
WESTERN ENGINEERING CONSULTANTS  
1445 WILLAMETTE ST. EUGENE  
JUNE, 1963  
SCALE  
1 INCH = 60 FEET



FILED *L.L.*  
RECEIVED  
JULY 2 1963  
COUNTY SURVEYOR  
DOUGLAS COUNTY, ORE.

REGISTERED  
OREGON  
LAND SURVEYOR  
*William A. Einstad*  
MAY 4, 1956  
WILLIAM A. EIMSTAD  
377



M 26-14

MAP FILE M 26-14