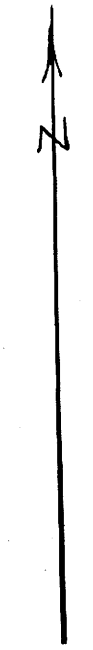
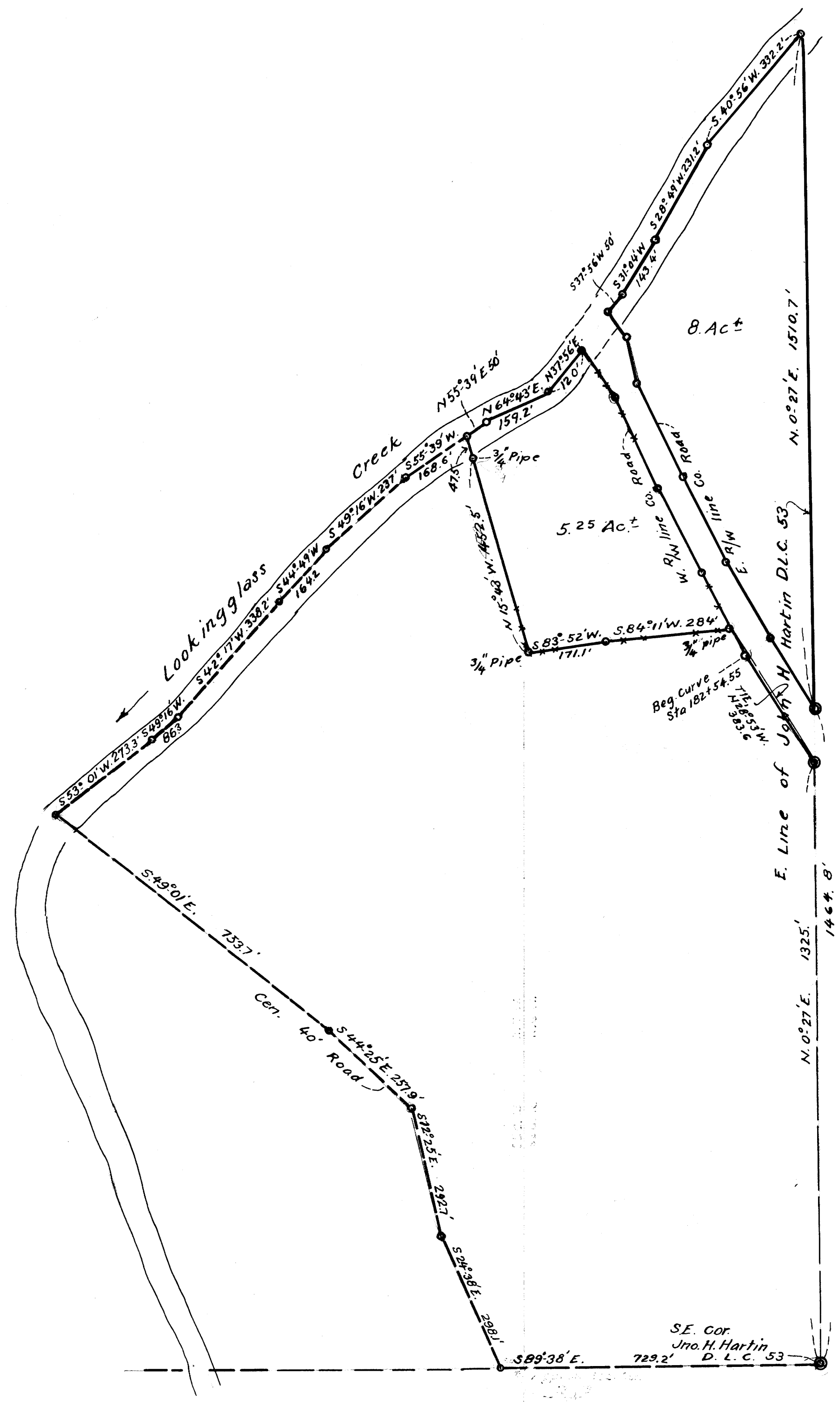


Case 1008

FILE M.26-10



FILED *L.S.*
RECEIVED

JUN 18 1963

COUNTY SURVEYOR
DOUGLAS COUNTY, ORE.

COUNTY SURVEYORS FILE UNIT
DO NOT REMOVE FROM OFFICE

DALE & BONNIE ZELLER
RANCH ON LOOKINGGLASS CK.,
IN JNO. H. HARTIN D.L.C. NO. 53,
SEC. 18, T. 28S; R. 6W, W.M.;
DOUGLAS COUNTY, ORE.
JUNE 1963 1" = 200 FT.

M.26-10