

COUNTY SURVEYORS FILE DATA  
DO NOT REMOVE FROM OFFICE

MAP FILE M 25-79

SURVEY OF PORTIONS OF LOTS 17, 18, 19, 20 BLOCK 2, 3 GARDEN HOMES

Surveyed for S & S Builders Inc.

Surveyor Don Garrett

Date May 30, 1963

Scale 1" = 60'

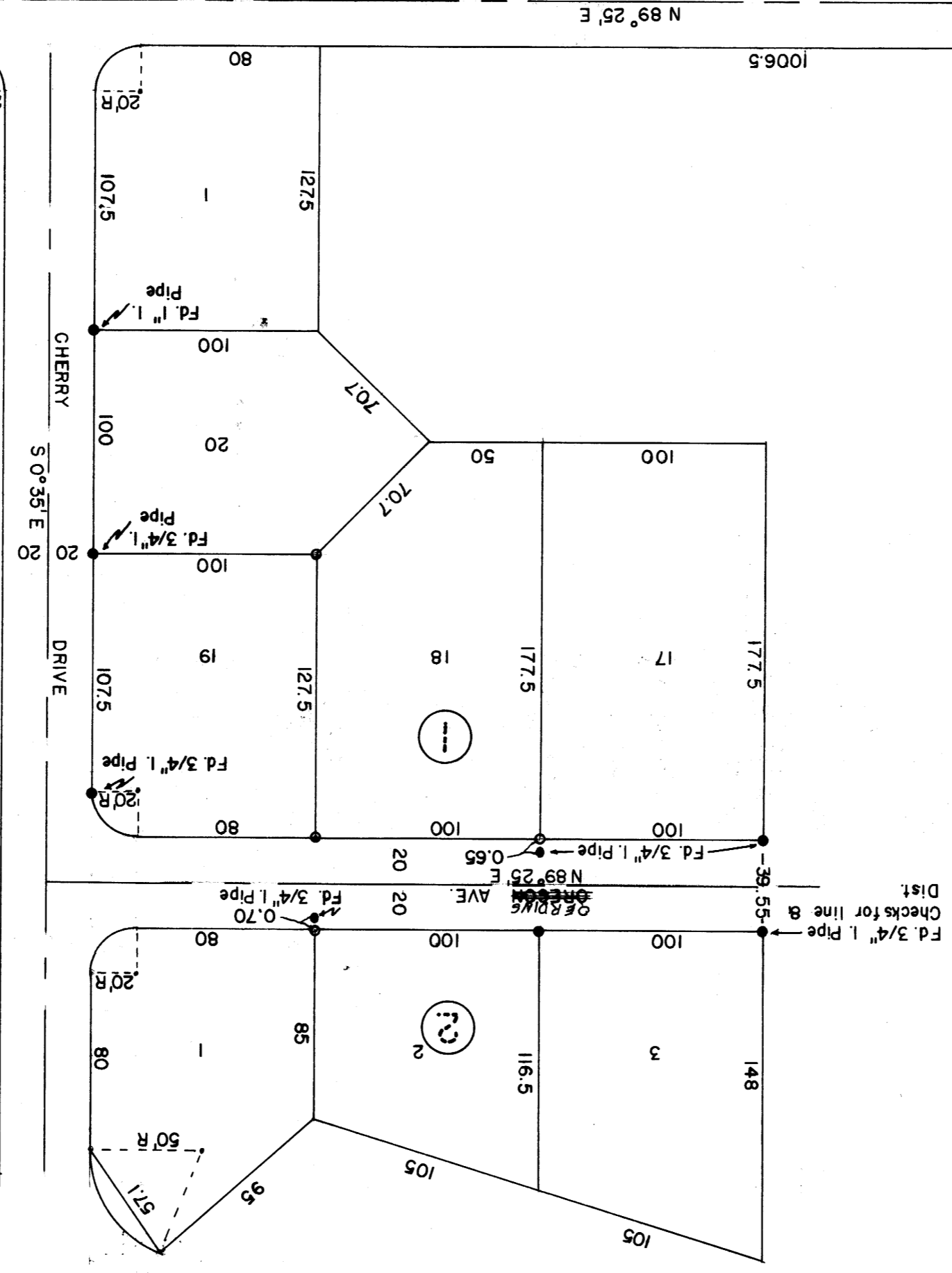
Note. Bearings are based on official plat of Garden Homes.  
o - Denotes 3/4" Iron Rod Set During Survey

FILED  
J. L.

JUN 5 1963

COUNTY SURVEYOR  
DOUGLAS COUNTY, ORE.

REGISTERED  
LAND SURVEYOR  
OREGON  
DON E. GARRETT  
JULY 14, 1961  
544



Fd. 2" I. Pipe  
Initial Point Garden Home  
160  
20' R

M 25-79