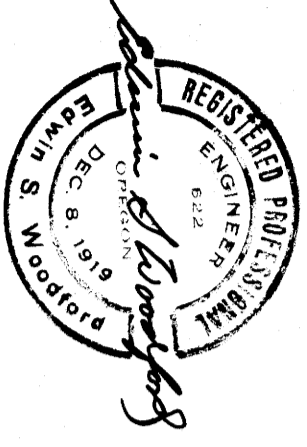


M 25-75

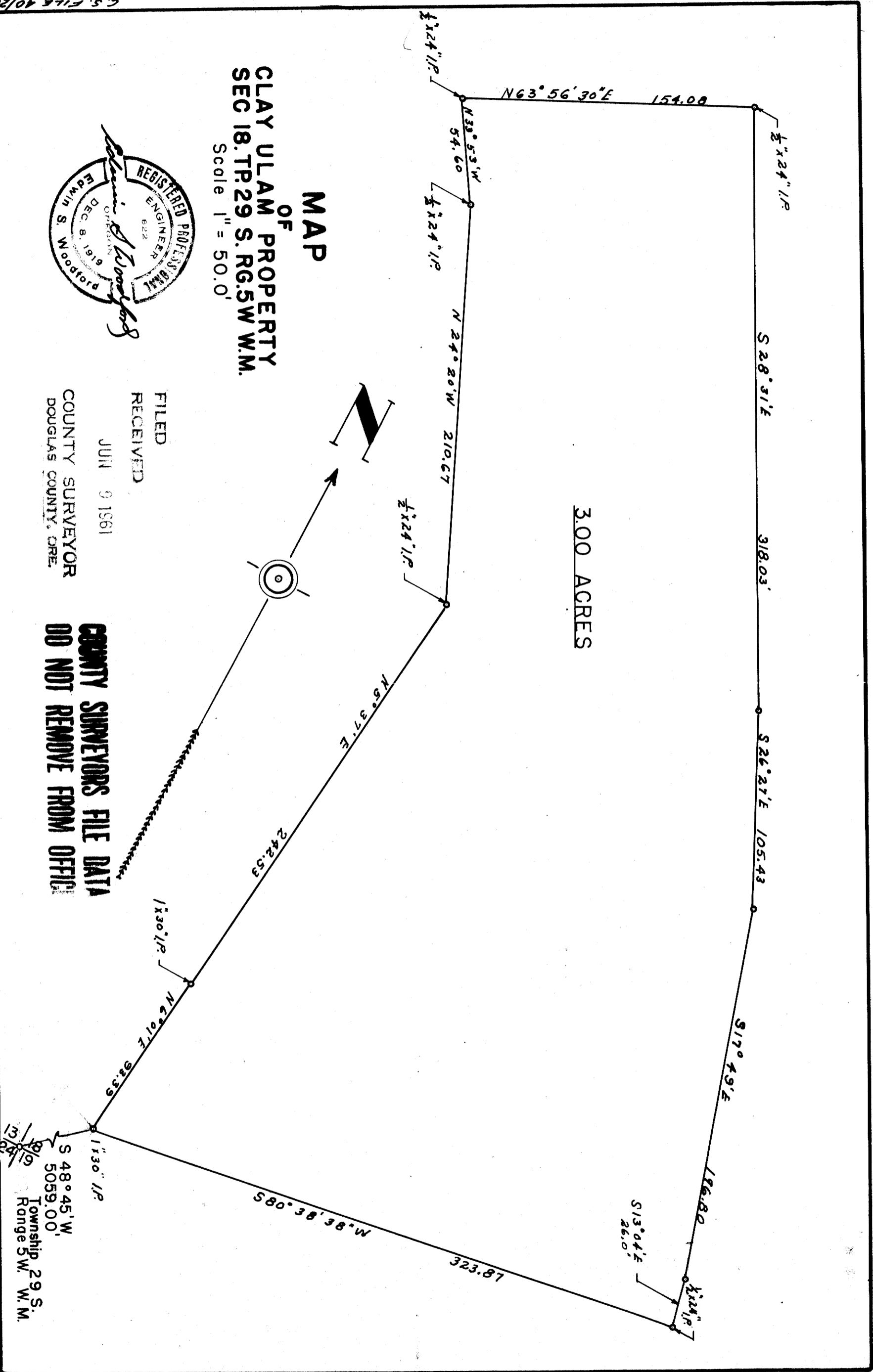
C.S. FILE 40/209  
M25-75

# MAP OF CLAY ULAM PROPERTY SEC 18. TP. 29 S. RG. 5 W. M.M.

Scale 1" = 50.0'



3.00 ACRES



FILED  
RECEIVED  
JUN 9 1961  
COUNTY SURVEYOR  
DOUGLAS COUNTY, ORE.

**COUNTY SURVEYORS FILE DATA  
DO NOT REMOVE FROM OFFICE**

13/24  
8/16  
S 48° 45' W  
5059.00'  
Township 29 S.  
Range 5 W. W.M.

C.S. FILE 40/209  
M25-75

M 25-75

e.s. 40/209

-44-

CS FILE FOLDER

CONTAINS

MORE

INFORMATION