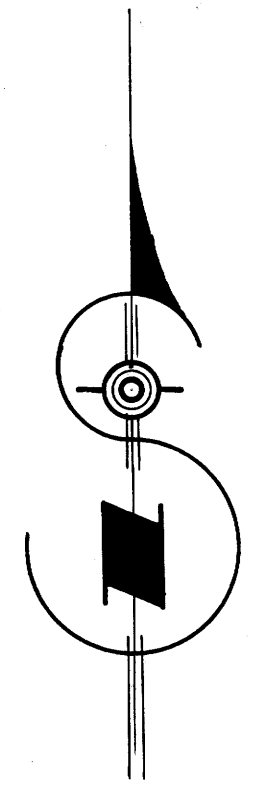
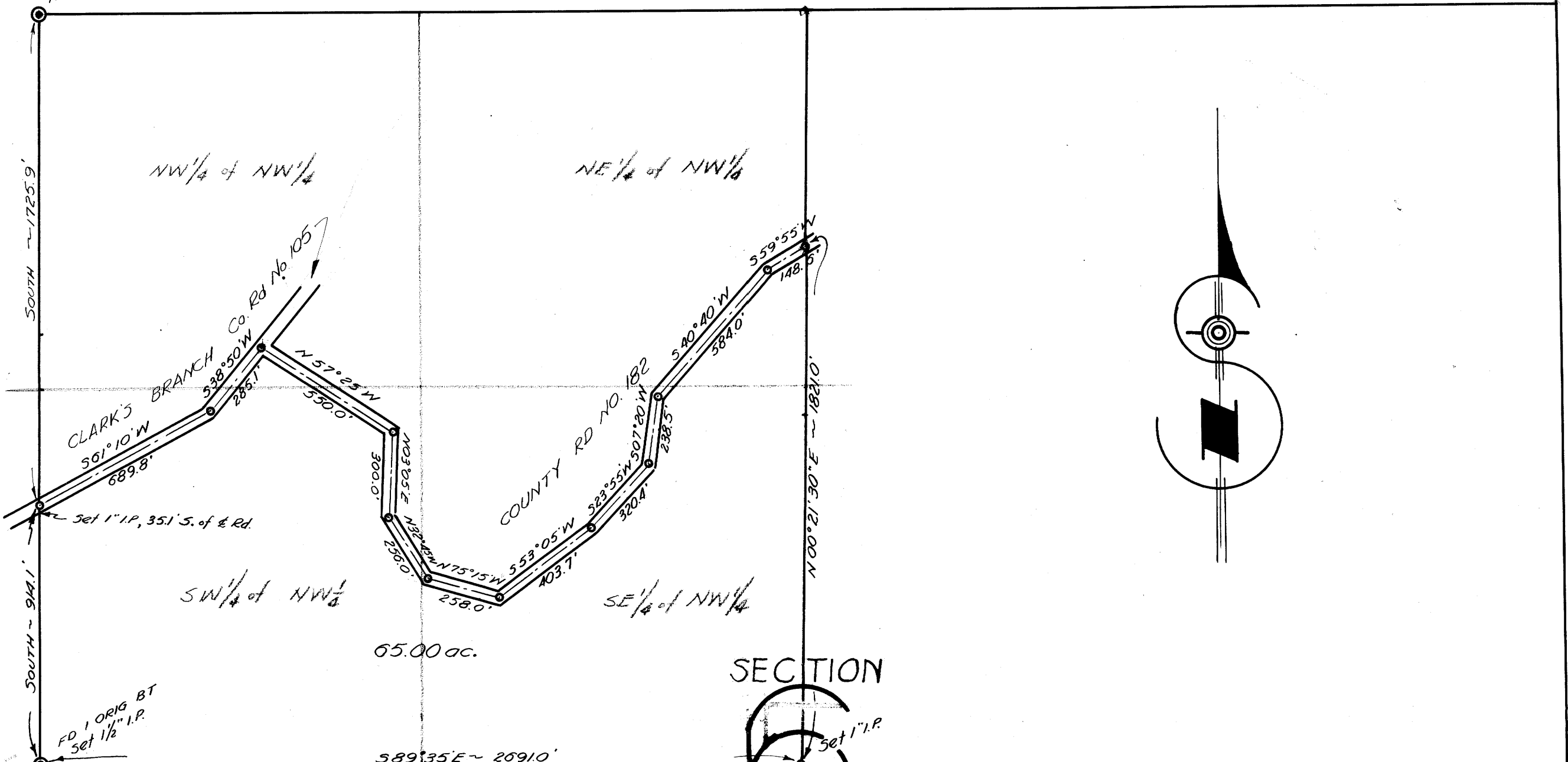
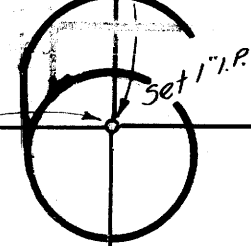


FD 2 ORIG. BTs
Reset 1" I.P. for Temp. Cor.

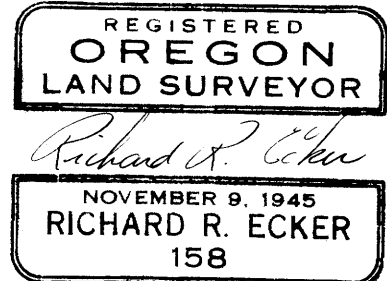


SECTION



T295, R5W,
W.M.
DOUGLAS Co OREGON

JOHN P. CLIFTON - M^cKINNEY
NW 1/4 SEC 5, T295, R5W, W.M.
Douglas Co. Oregon
Dec, 1946 Scale: 1" = 400'



COUNTY SURVEYORS FILE DATA
DO NOT REMOVE FROM OFFICE