

1
L-52 W
COUNTY SURVEYORS FILE DATA
DO NOT REMOVE FROM OFFICE

SURVEY OF SECTION 7, T 28 S R 2 W, W.M.

SURVEYED FOR U.S. PLYWOOD CORP.

JUNE, 1962

SURVEYED BY THOMAS E. SHRUM, JR.

SCALE 1" = 500'



C.C. Sec. 6 & 7

Found:

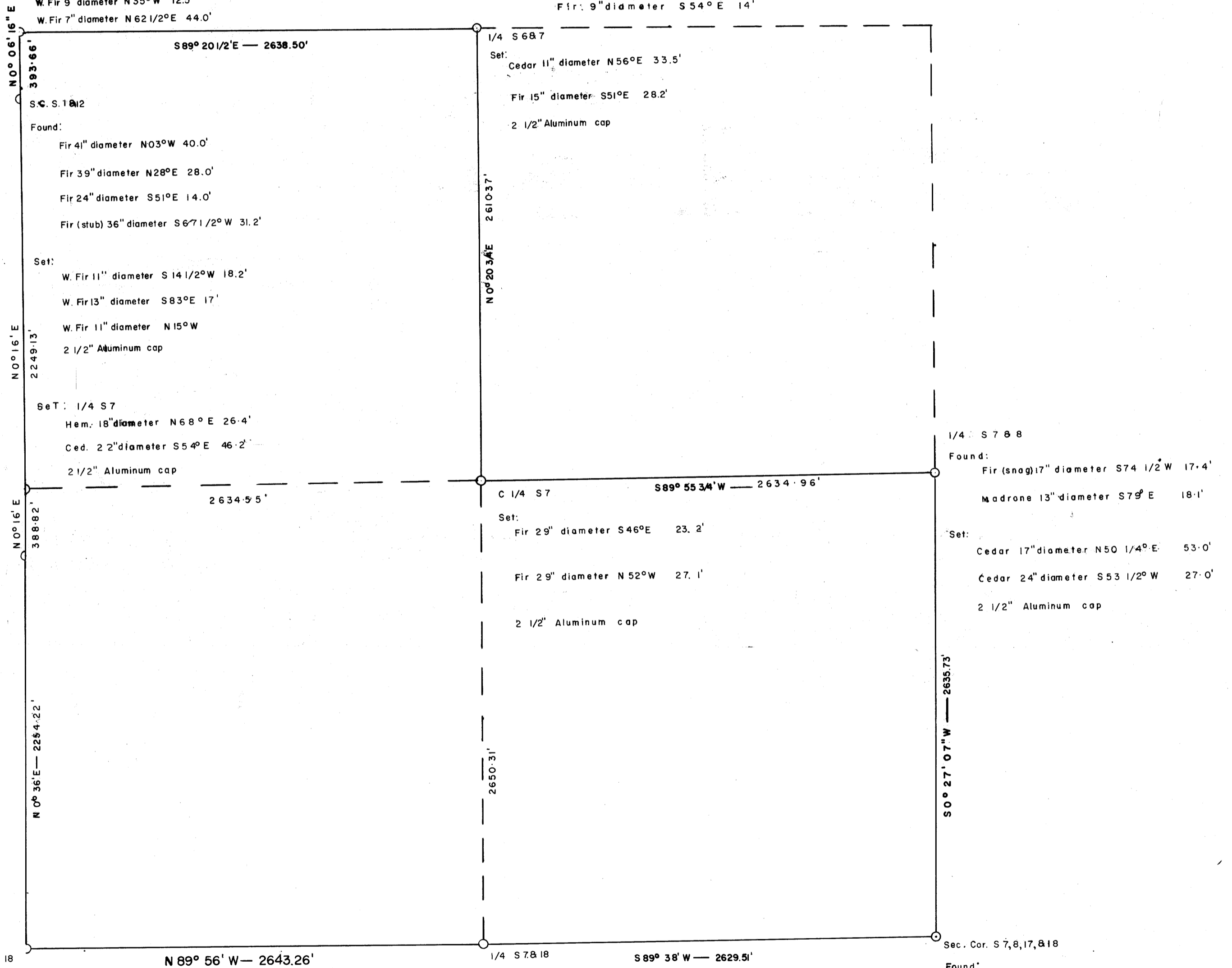
Ced. 18" diameter S 21° E 56.4'
Ced. 31" diameter N 84° E 34.0'

Set:

2 1/2" Aluminum cap
Ced. 21" diameter S 28 1/2° E 42.5'
W. Fir 9" diameter N 35° W 12.5'
W. Fir 7" diameter N 62 1/2° E 44.0'

Found:

Mad: 15" diameter N 37 1/2° W 21.8'
Fir: 9" diameter S 54° E 14'



1/4 S 12
Found:

Brass cap
Hem. 6" S 61° W 9.3'
Ced. 18" N 68° W 28.4'
Ced. 18" N 38° W 26.6'

C.C. Sec. 7 & 18

Found:

Fir 32" S 59° E 30.0'
Fir 21" N 81 1/2° E 57.8'

Set:

Fir 20" N 33° W 26.3'
2 1/2" Aluminum cap

Found:

Hem. 17" S 23° W 8.8'

Set:

Hem. 16" N 68 1/4° W 55.8'
2 1/2" Aluminum cap

Found:

Hem. 10" diameter N 80 1/2° W 14.6'
CED. 23" diameter N 17° E 15.5'
Maple 8" diameter S 41° W 19.8'
Yew 7" diameter S 48 1/2° E 14.8'

Set:

2 1/2" Aluminum cap

FILED *LL*
RECEIVED

MAR 29 1963

COUNTY SURVEYOR
DOUGLAS COUNTY, ORE.