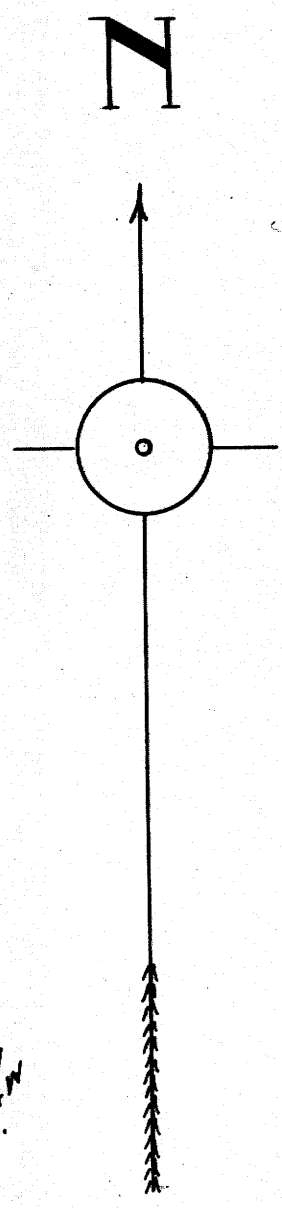
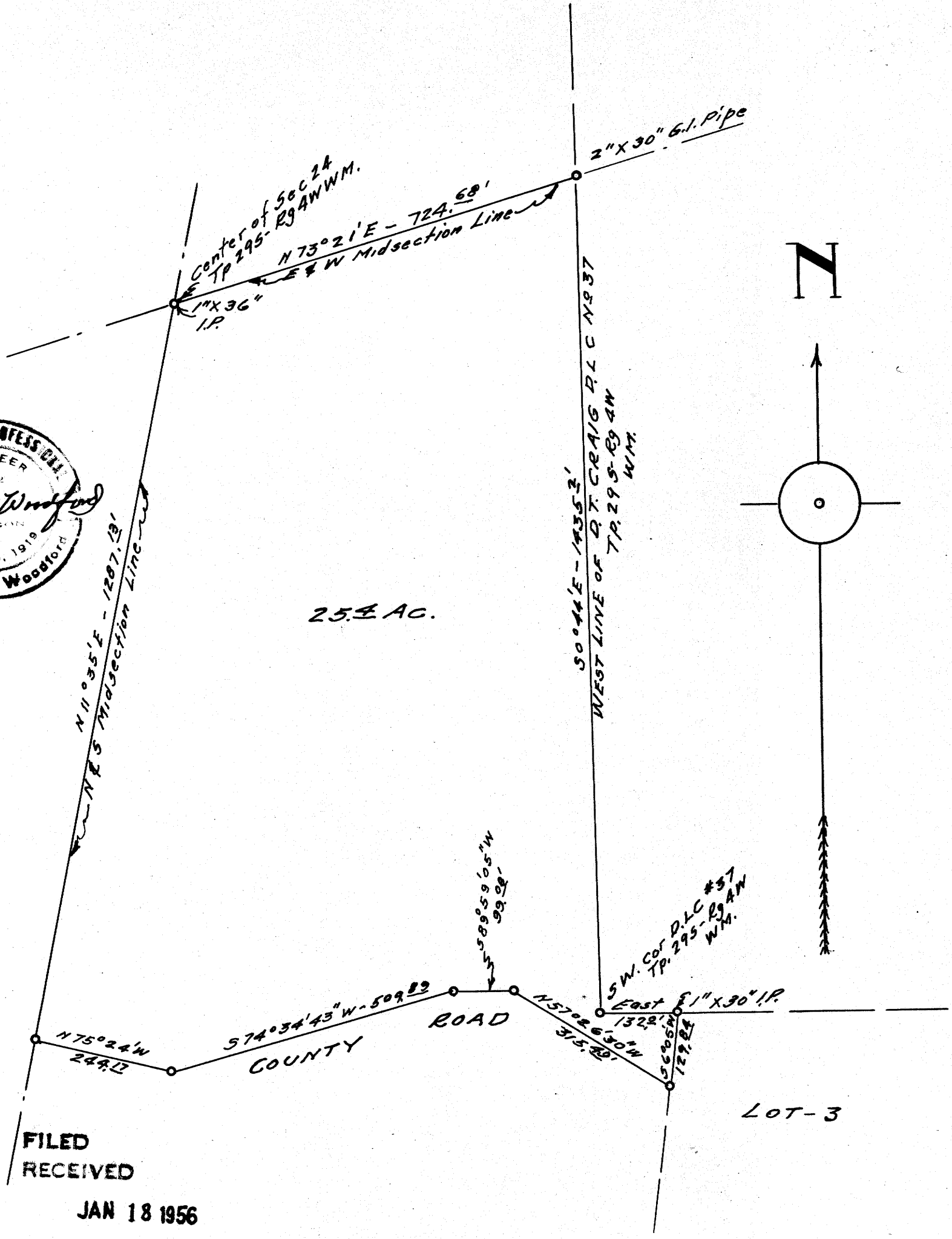
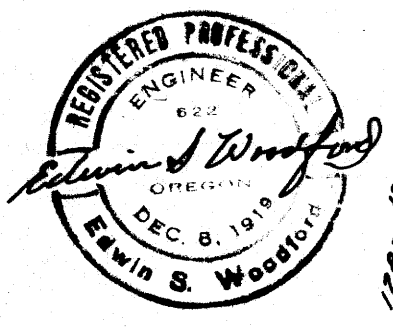


COUNTY SURVEYORS FILE DATA
DO NOT REMOVE FROM OFFICE

MAP SHOWING PORTION OF COLLIER PROPERTY. IN

SECTION 24 TP. 29S-RG. 4W WM.
Scale - 1" = 200' JUNE 1955.



FILED
RECEIVED
JAN 18 1956

COUNTY SURVEYOR
DOUGLAS COUNTY, OREGON

AND