

COUNTY SURVEYORS FILE DATA
DO NOT REMOVE FROM OFFICE

SEC. 13 T 28 S R 7 W W.M.

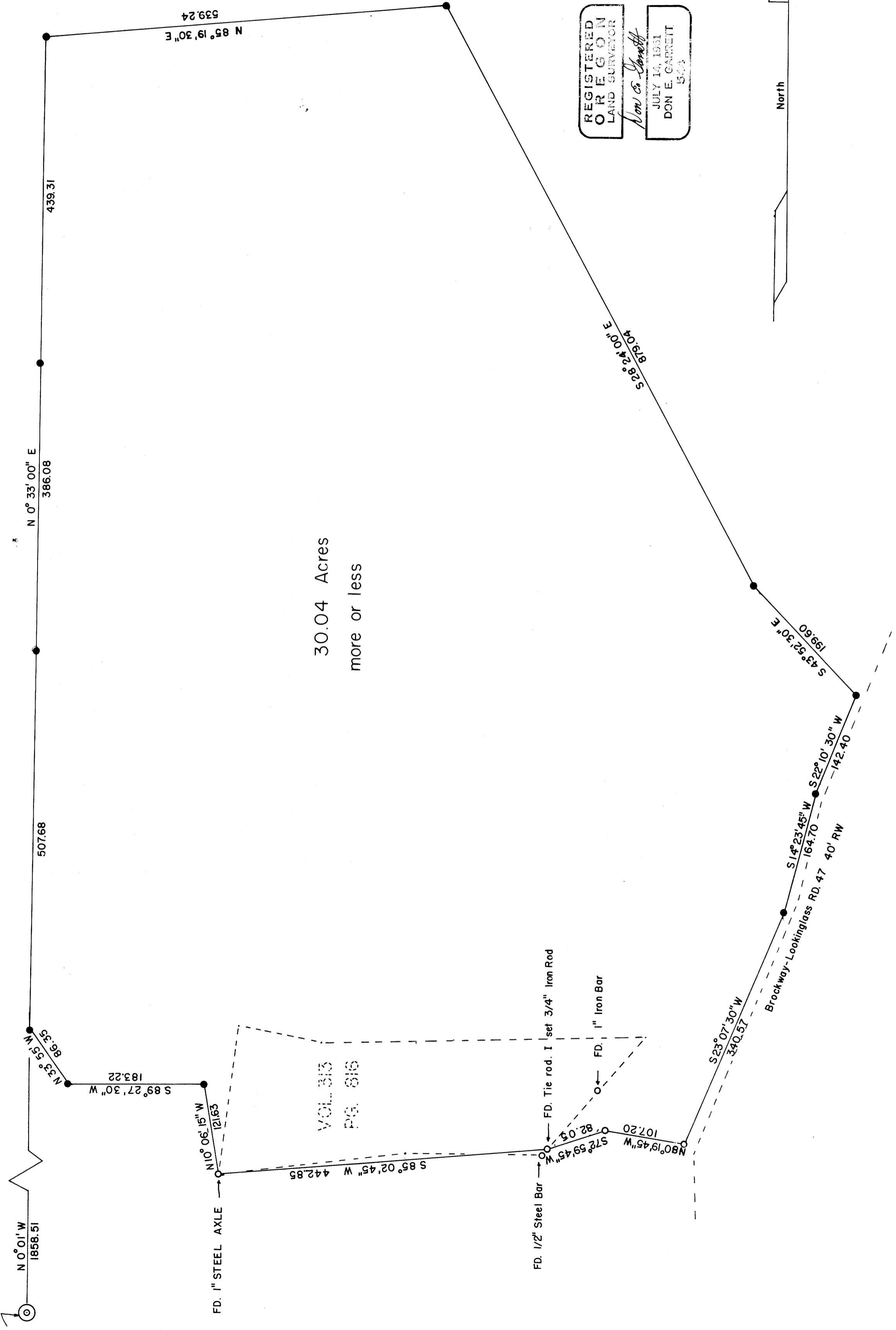
Survey for Cecil Shulze
Surveyor Don Garrett

May 20, 1963
Scale 1" = 100'
● - 1/2" Iron Rod
○ - 3/4" Iron Rod

Note. Bearings are based on Douglas Co.
Engineers relocation survey sta.
204+06.11 P.T. - 213+00.54 P.O.T.
N 26° 01' 45" E

SW COR. D.L.C. 37 T 28 S R 7 W W.M.

FD. Stone set at fence cor.
7" Oak N 58° W 6.0'
14" " N 20° E 20.3'



FILED
MAY 21 1963
COUNTY SURVEYOR
DOUGLAS COUNTY, ORE.

MAP FILE M 25-60-3