

SURVEY OF LOTS 14,15,16, & THE SOUTH 21 FT. OF LOT 17 BLOCK 23  
KINNEY'S IMPROVED PLAT OF THE CITY OF ROSEBURG, ORE.

SURVEYOR DON GARRETT SURVEYED FOR KATHERINE WELCH

MAY 11, 1963

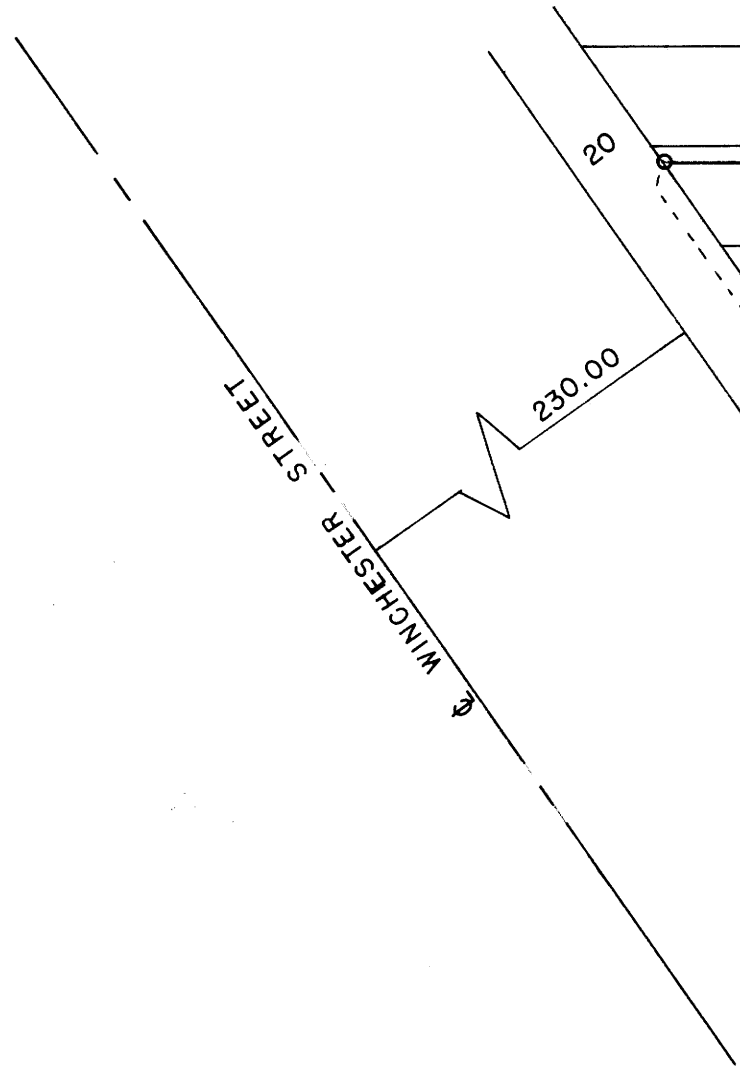
COUNTY SURVEYORS FILE DATA

o-- DENOTES 3/4" IRON ROD

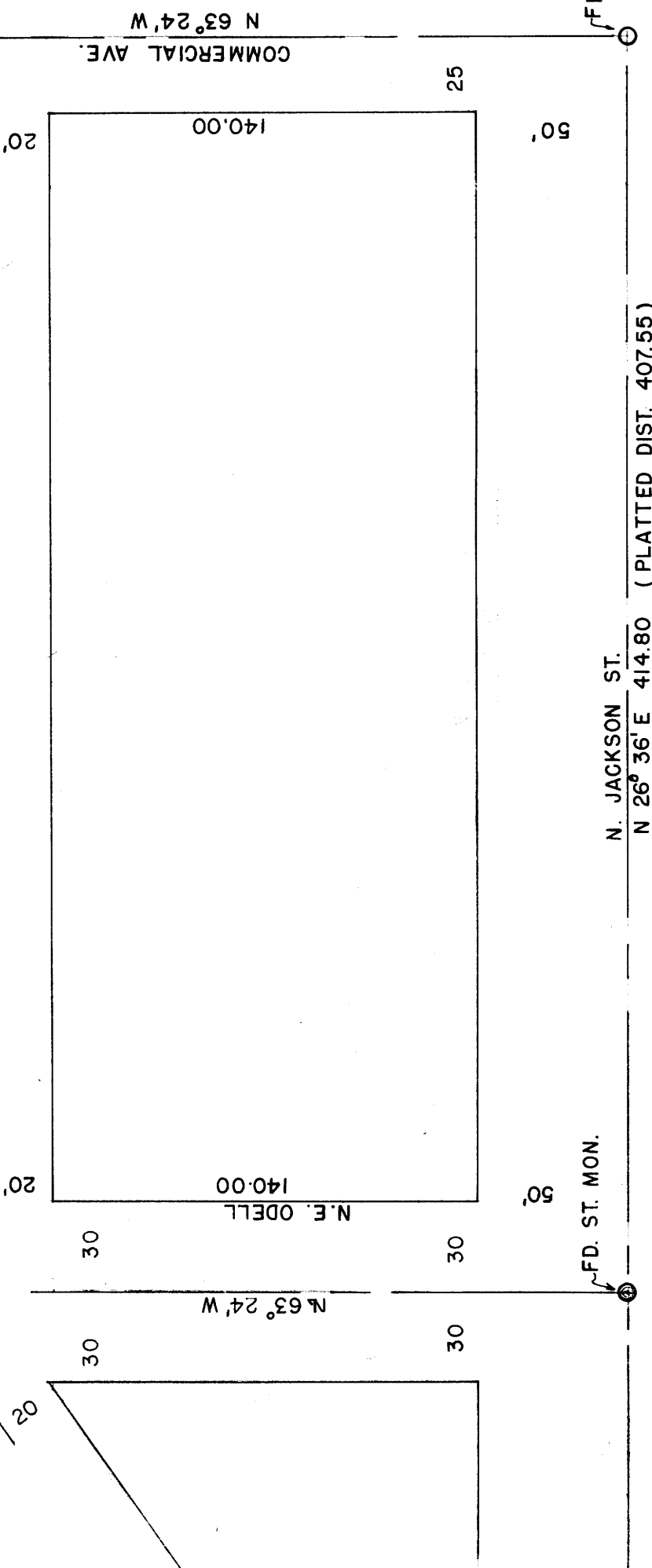
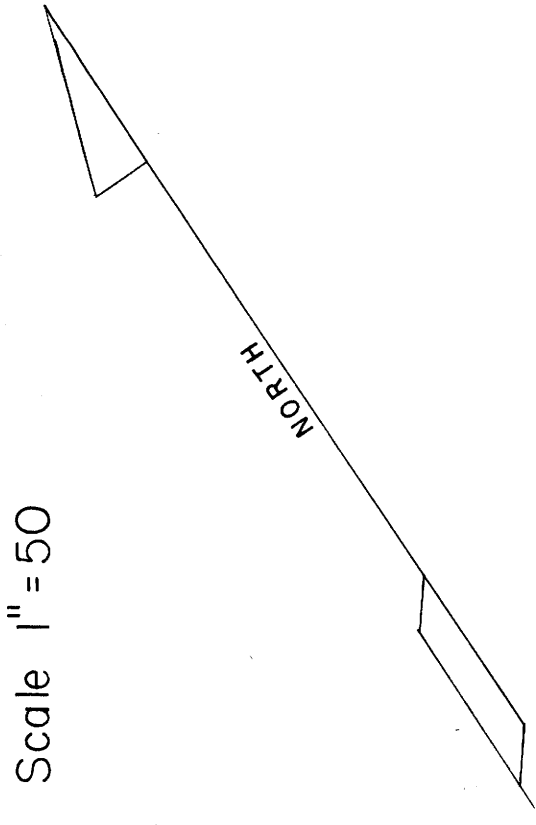
DO NOT REMOVE FROM OFFICE

Note. Bearings are based on the Center line bearing of N. Jackson St. as shown on the 1902 survey of Kinneys improved plat.

An excess of 7.25 in the length of Block 23 is distributed among the lots at the rate of .0221 per ft.



Scale 1" = 50



REGISTERED  
OREGON  
LAND SURVEYOR

*Don E. Garrett*

JULY 14, 1961  
DON E. GARRETT  
544

FILED *L.S.*  
RECEIVED

MAY 21 1963

COUNTY SURVEYOR  
DOUGLAS COUNTY, ORE.