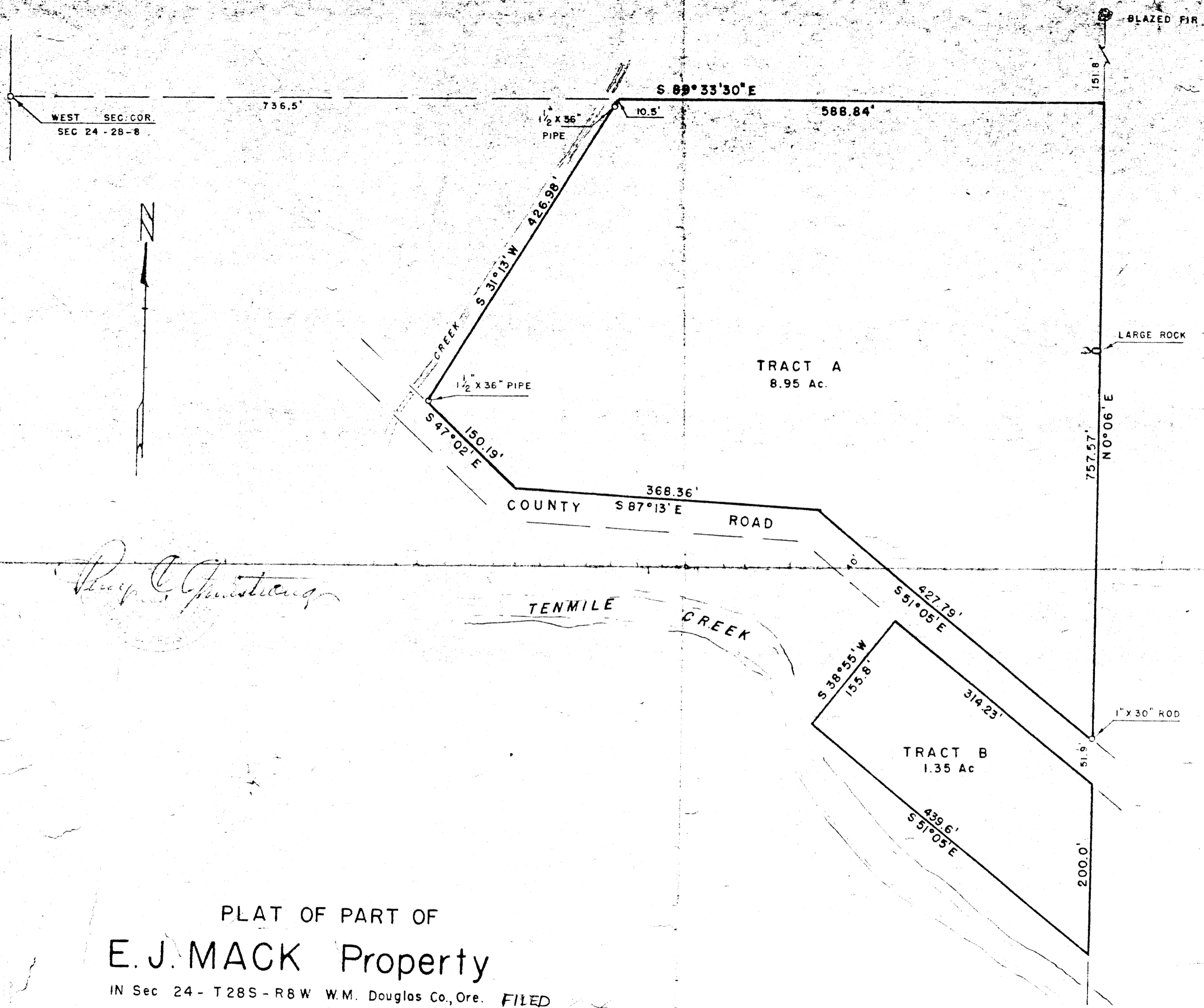


41/264
M25-57



PLAT OF PART OF
E. J. MACK Property

IN Sec 24 - T28S - R8W W.M. Douglas Co., Ore.
 February 1954 Scale 1"=100'

FILED
 RECEIVED

MAR 16 1954

COUNTY SURVEYOR
 DOUGLAS COUNTY, ORE.

**COUNTY SURVEYORS FILE DATA
 DO NOT REMOVE FROM OFFICE**

THIS COPY MADE FROM
 A XEROX 2510
 DATE Aug. 11, 89

25-57
 41/264