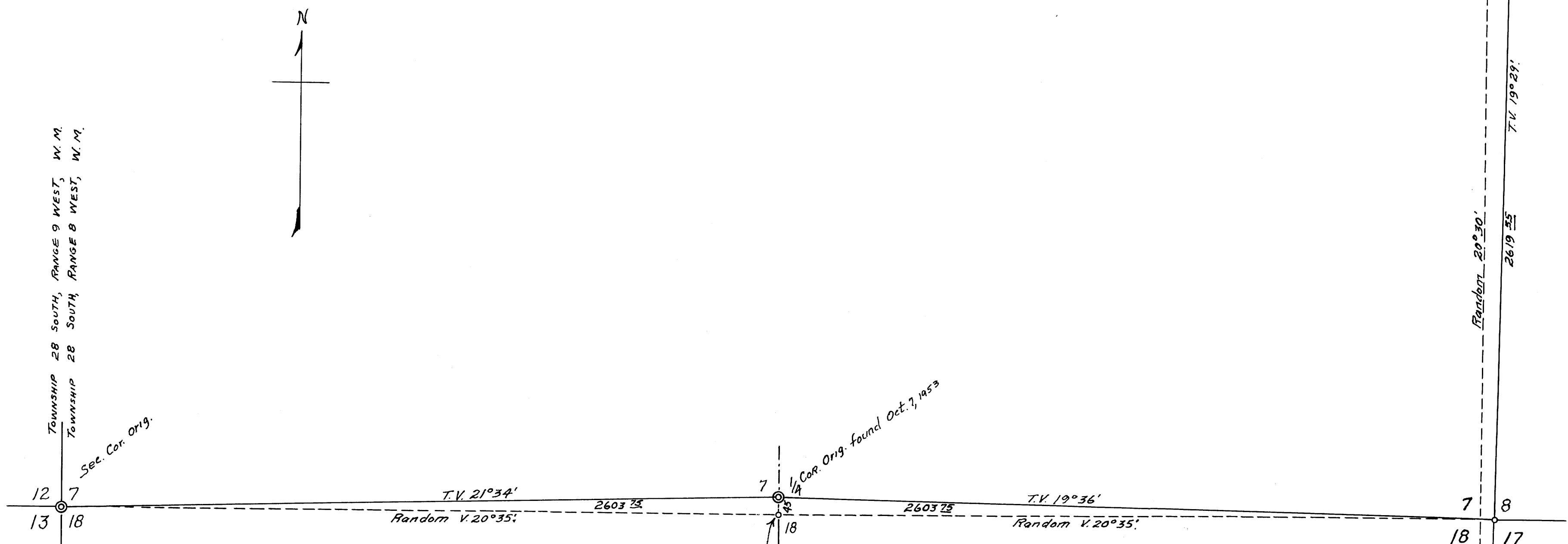


C.S. FILE #1153
M 25-56



I make the line run in April
a Random line and destroy the
corner and markings on the B.T.s
for the Cor. I established.
Oct. 7, 1953.

Original Corners found. ©
Corner established. ©
Survey by C.S. Lehmanowsky.
Survey for the Coos Bay Lumber Company, Coos Bay, Oregon.
Purpose to establish the Section Corner common to Sections
7, 8, 17 and 18 of Township 28 South, Range 8 West of the
Willamette Meridian.

Survey commenced April 27, 1953.
Survey completed. April 30, 1953.
Survey correction Oct. 7, 1953.

C.S. Lehmanowsky.

Scale 1 in. = 300 ft.

COUNTY SURVEYORS FILE DATA
DO NOT REMOVE FROM OFFICE

FILED
RECEIVED
FEB 13 1954
COUNTY SURVEYOR
DOUGLAS COUNTY, ORE.

C.S. FILE #1153
M 25-56