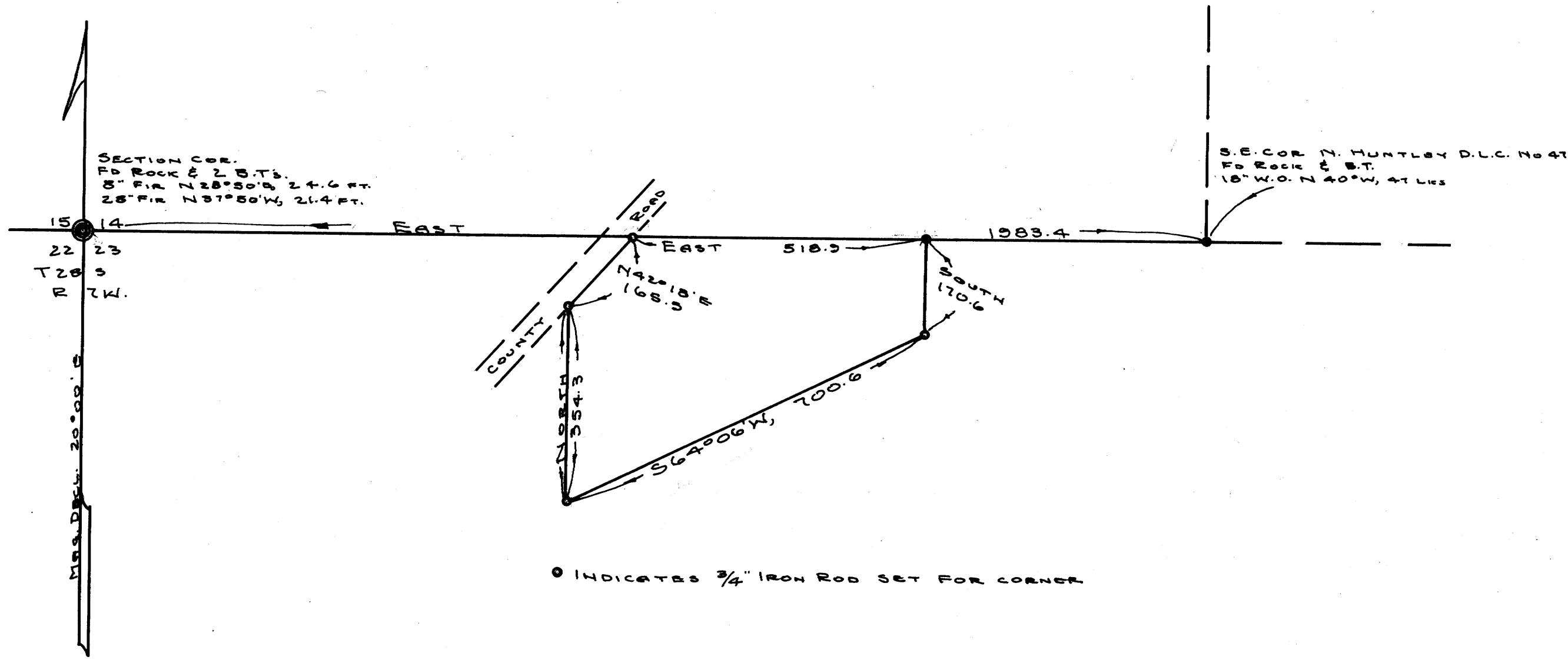


C.S. FILE #11/190
M25-52



SURVEY FOR DEED DESCRIPTION
 NW 4 SECTION 23, T28S, R7W, WM.
 DOUGLAS COUNTY, OREGON

GRANT AND EVANS, ENGINEERS
 ROSEBURG OREGON
 SURVEYED JUNE 1953
 SCALE 1" = 200'



FILED
 RECEIVED

AUG 15 1953

COUNTY SURVEYOR
 DOUGLAS COUNTY, ORE.

COUNTY SURVEYORS FILE DATA
 DO NOT REMOVE FROM OFFICE

C.S. FILE #11/190
 M25-52