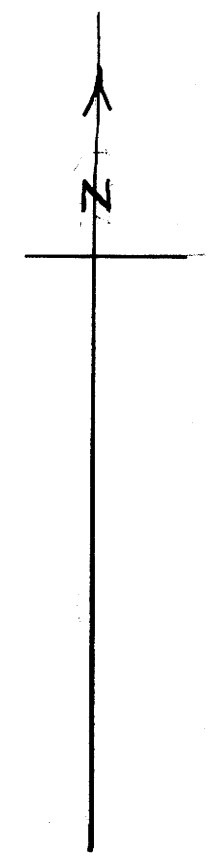
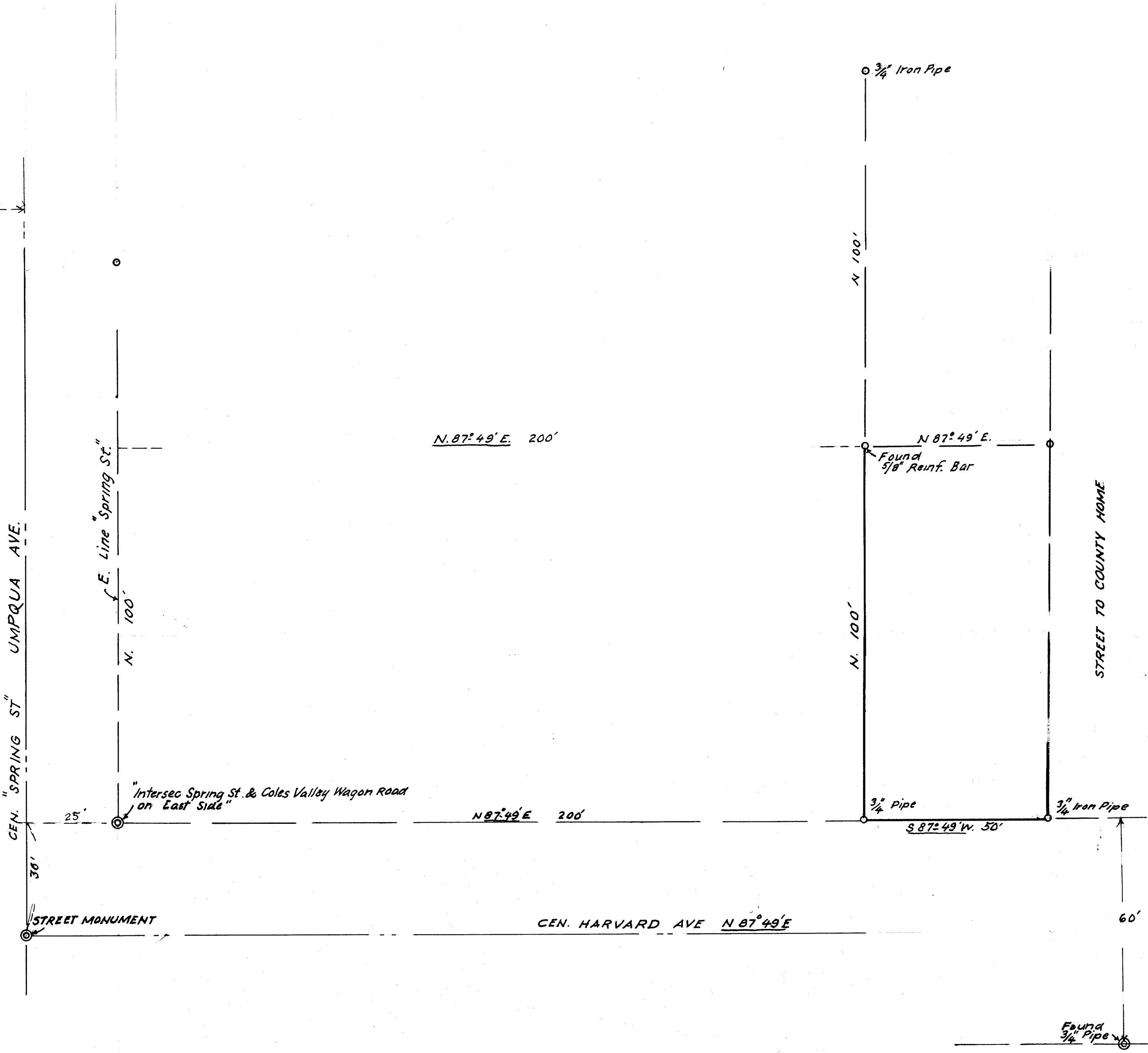


LONG
Found 3/4" I.P.
W. Side St.



FILED *L.L.*
 RECEIVED
 MAY 7 1963
 COUNTY SURVEYOR
 DOUGLAS COUNTY, ORE.

TED SMALLE PROPERTY
 50' x 100' METES AND BDS. DESCRIPTION
 IN J. HUNTEY D.L.C. T27S; R. 6 W; W. M.
 IN ROSEBURG, OREGON.
 SEPT. 1962 *AB* 1" = 20'

COUNTY SURVEYORS FILE DATA
 DO NOT REMOVE FROM OFFICE