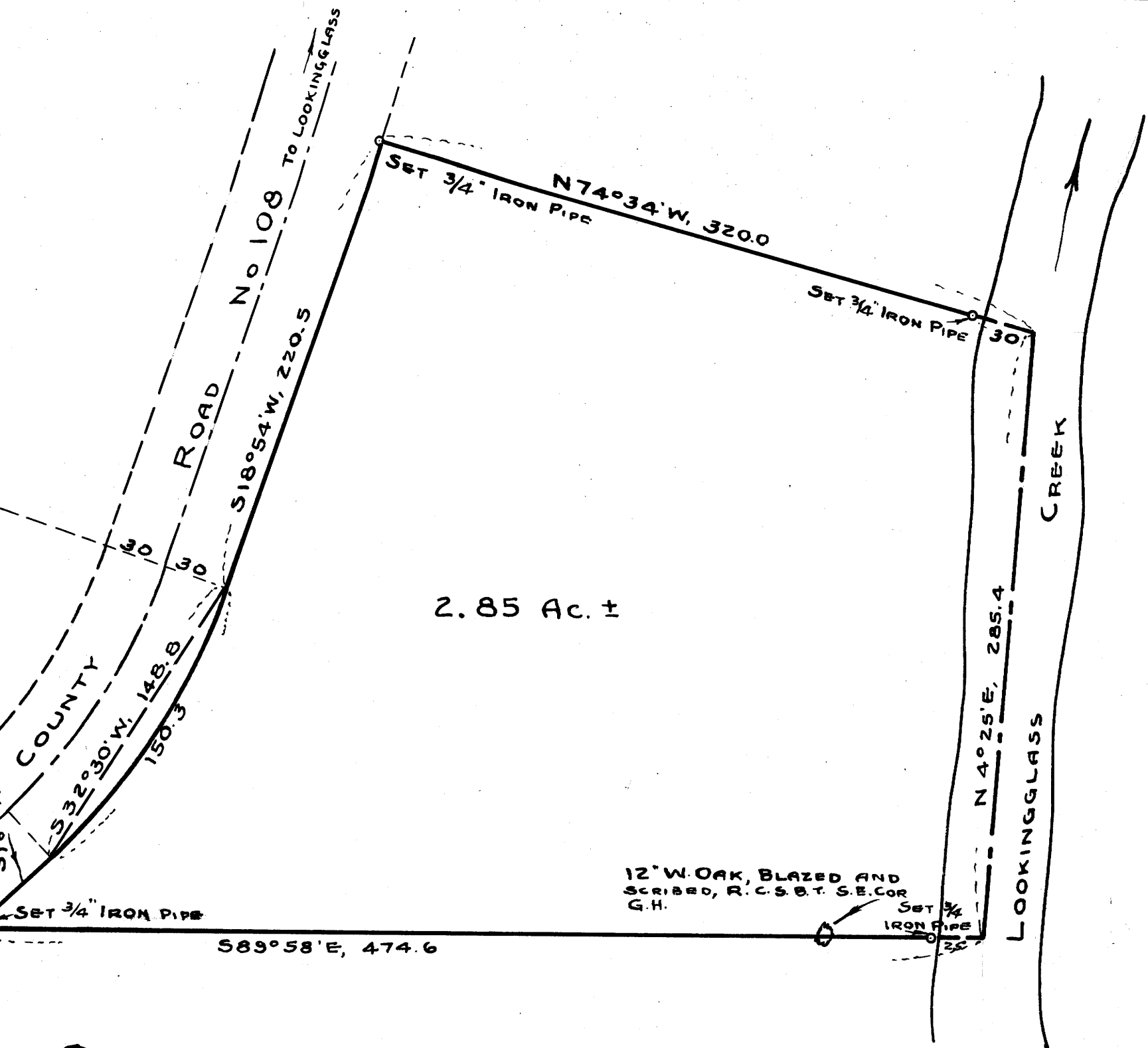
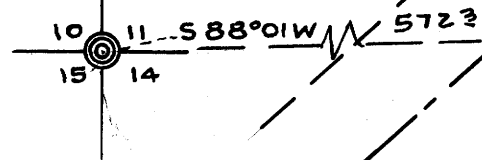
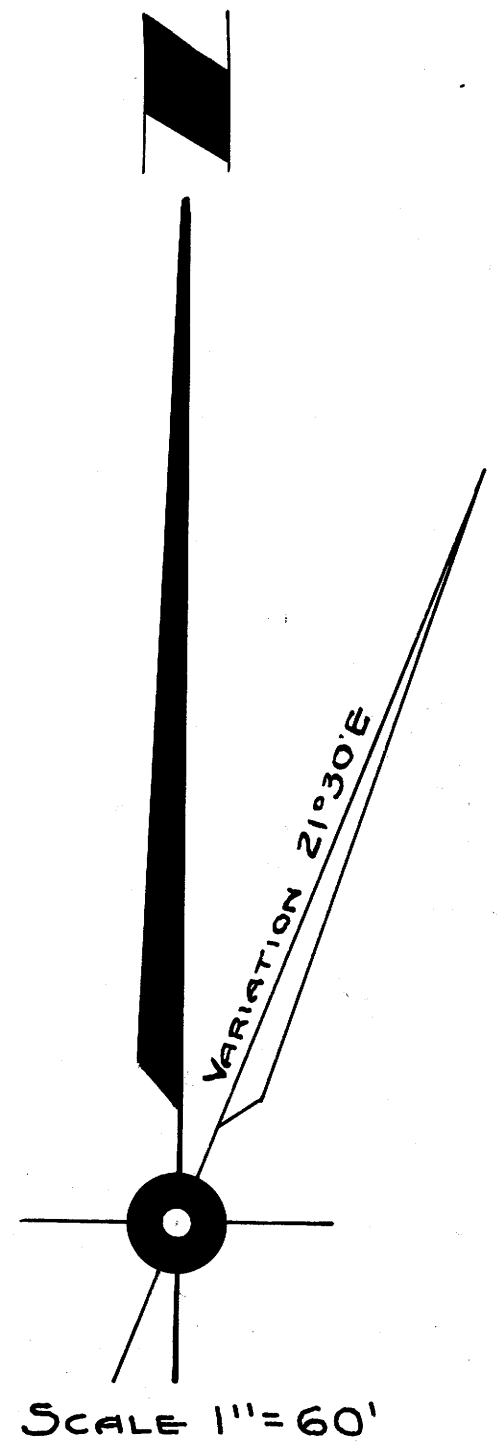


RESET SECTION COR FROM O.B.T.'S
 42" W. OAK, N85E, 119 LKS.
 42" W. OAK, S73W, 600 LKS.
 14" W. OAK, N76W, 653 LKS.
 SET 1 1/4" x 3/8" IRON PIPE
 BLAZED & SCRIBED B.T.
 28" W. OAK, S50E, 209.5 FT.
 MKD. T28S, R7W, S-14, C.S.B.T.



12" W. OAK, BLAZED AND SCRIBED, R.C.S.B.T. S.E. COR G.H.



OFFICE OF THE COUNTY SURVEYOR
 DOUGLAS COUNTY OREGON
 SURVEY FOR DEED DESCRIPTION
 SECTION 11, T28S., R7W.W.M.
 BEN B. IRVING COUNTY SURVEYOR
 SURVEYED & PLATTED, JUNE 1949 BY
 A.R. EVANS, DEPUTY COUNTY SURVEYOR



COUNTY SURVEYORS FILE
 DO NOT REMOVE FROM

C.S. FILE 43/137
 M25-49 P

C.S. FILE 43/137
 M25-49