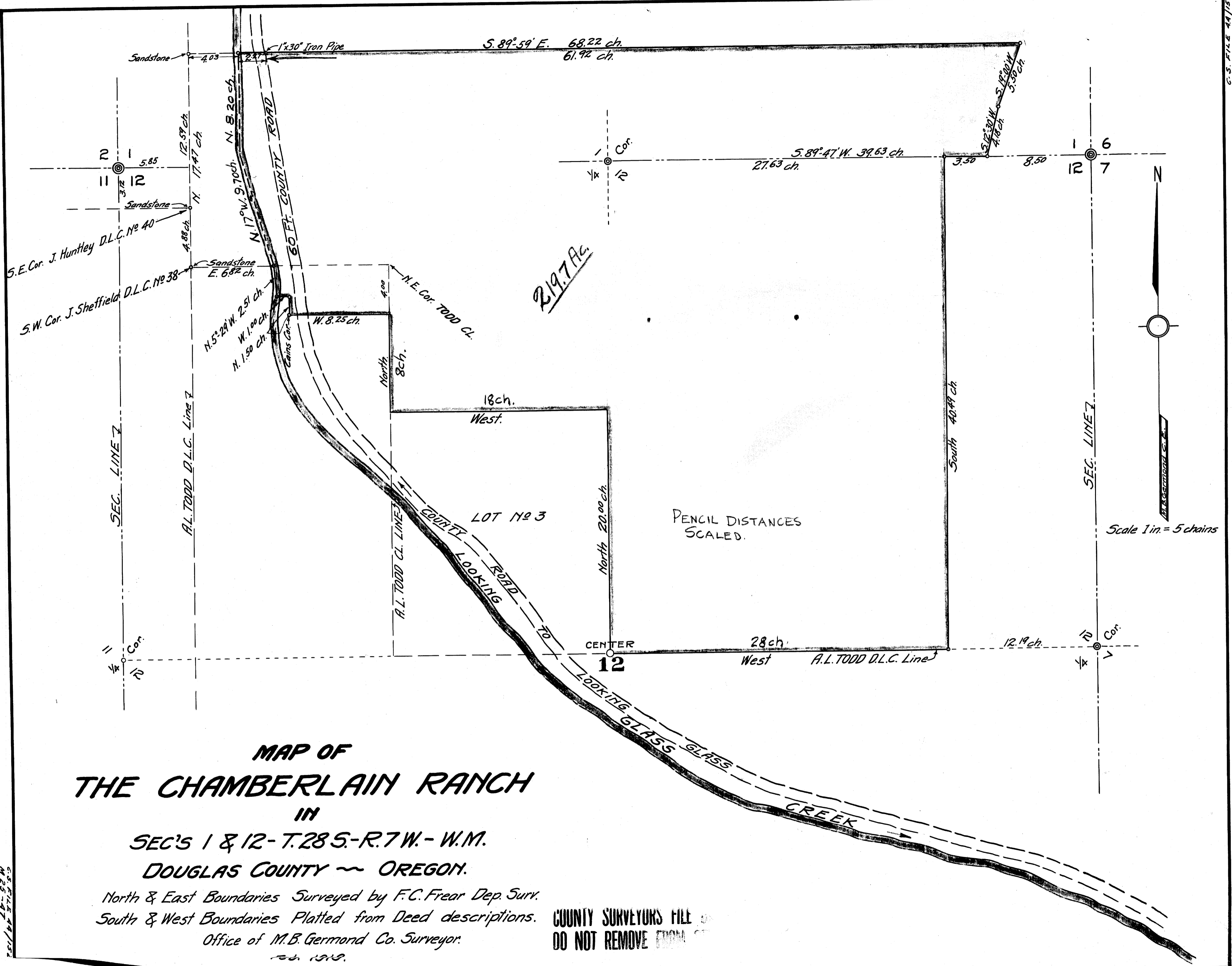


C.S. FILE 44/152
M 25-47



**MAP OF
THE CHAMBERLAIN RANCH
IN
SEC'S 1 & 12 - T.28 S. - R.7 W. - W.M.
DOUGLAS COUNTY ~ OREGON.**

North & East Boundaries Surveyed by F.C. Frear Dep. Surv.
South & West Boundaries Platted from Deed descriptions.
Office of M.B. Germond Co. Surveyor.
20. 1919.

COUNTY SURVEYORS FILE
DO NOT REMOVE FROM

C.S. FILE 44/152
M 25-47