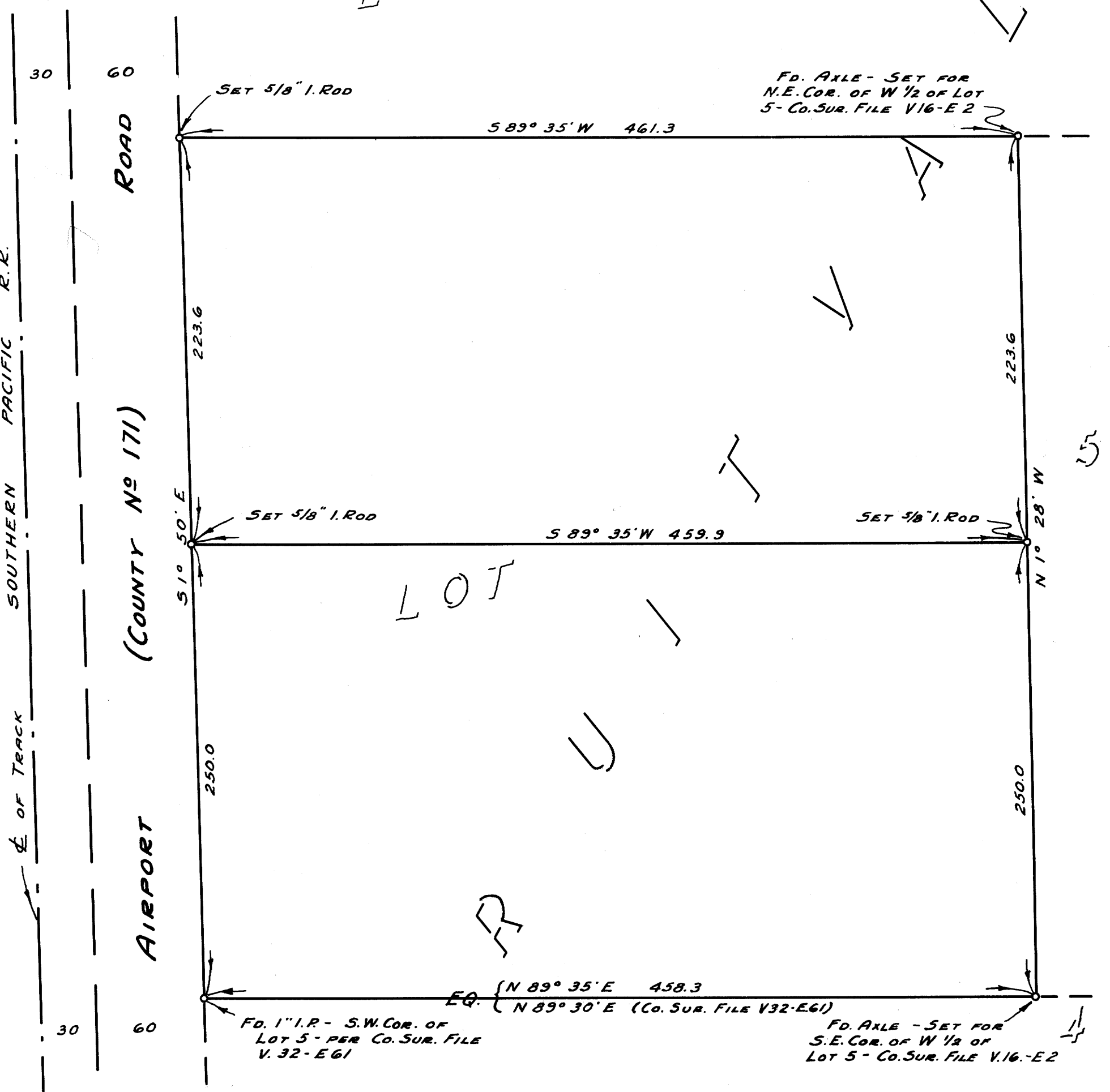


COUNTY SURVEYORS FILE DAY
DO NOT REMOVE FROM OFFICE

6

LOT

LE



5

LOT

R

LE LOT

NOTE:-
BEARINGS SHOWN ARE BASED ON RECORD BEARINGS AS SHOWN ON PLAT OF EDENBOWER ORCHARD TRACTS, AS FILED.

COUNTY SURVEYOR'S OFFICE
DOUGLAS COUNTY, OREGON

SURVEY TO SET PROPERTY CORNERS.

BEN. B. IRVING COUNTY SURVEYOR
SURVEYED JULY 3, 1951
A. R. EVANS BY DEPUTY P

SCALE 1" = 60'

C.S. File 44 / 132



Map File M25-44

M25-44