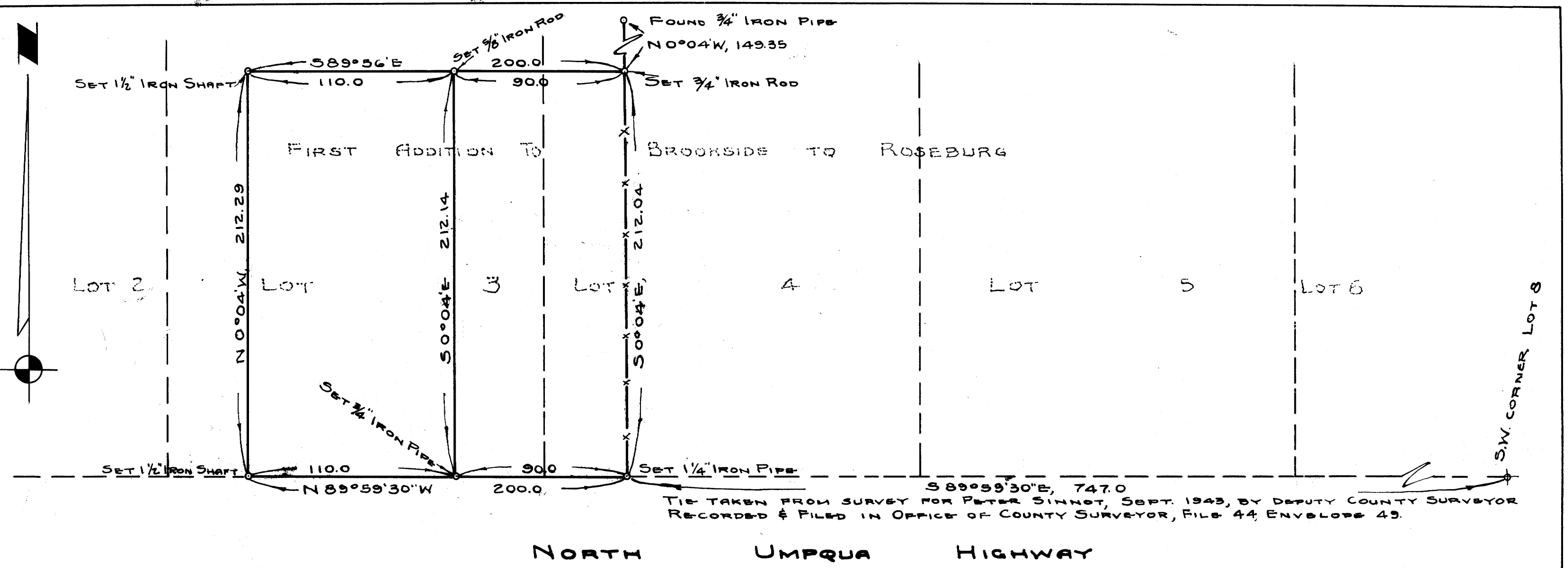


M25-35



TIE TAKEN FROM SURVEY FOR PETER SINNOT, SEPT. 1943, BY DEPUTY COUNTY SURVEYOR RECORDED & FILED IN OFFICE OF COUNTY SURVEYOR, FILE 44, ENVELOPE 49.

NORTH UMPQUA HIGHWAY

**COUNTY SURVEYOR'S OFFICE
DOUGLAS COUNTY OREGON
SURVEY FOR DEED DESCRIPTIONS
PARTS OF LOTS 3 & 4, FIRST ADD'N
OF BROOKSIDE TO ROSEBURG, ORE.**

REGISTERED
OREGON
LAND SURVEYOR
N.E. Richardson
JULY 7, 1944
N. E. RICHARDSON
35

BEN B. IRVING COUNTY SURVEYOR
SURVEYED, DECEMBER, 1950, BY
N.E. RICHARDSON DEPUTY

**COUNTY SURVEYORS FILE UP
DO NOT REMOVE FROM OFFICE**

SCALE 1" = 50'

FOR BOONE

PLATTED 1-11-50, BY A. REYANS, DEPUTY COUNTY SURVEYOR

C.S. FILE 44/77
MAP FILE M25-35