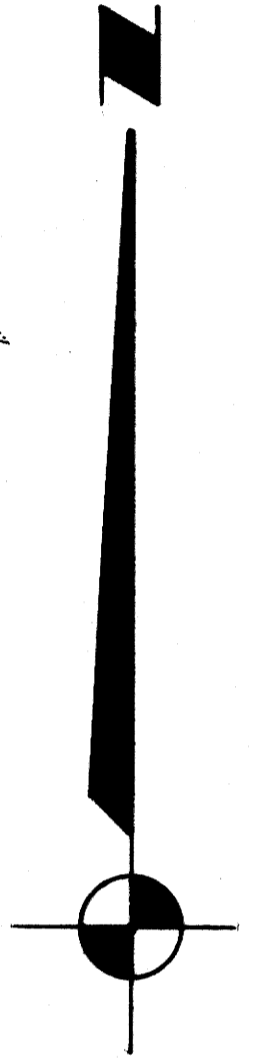
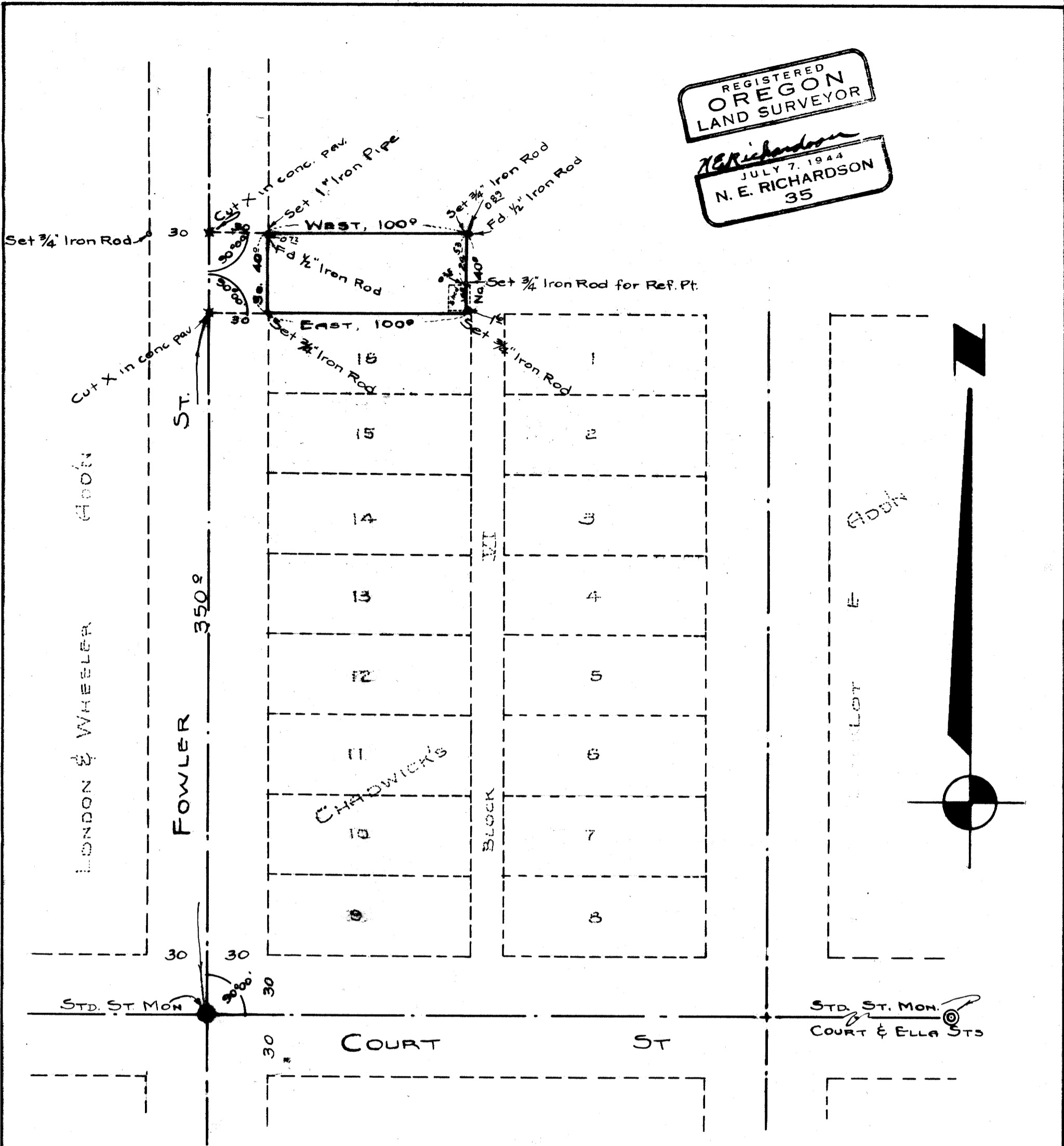


REGISTERED  
OREGON  
LAND SURVEYOR  
*N.E. Richardson*  
JULY 7, 1944  
N. E. RICHARDSON  
35



**COUNTY SURVEYOR'S OFFICE  
DOUGLAS COUNTY OREGON  
SURVEY TO ESTABLISH PROP.  
LINES & CORNERS, M & B PARCEL  
CITY OF ROSEBURG, ORE.**

**COUNTY SURVEYORS FILE  
DO NOT REMOVE FROM FILE**

**BEN B. IRVING** COUNTY SURVEYOR  
**SURVEYED, NOVEMBER 1, 1950, BY**  
**N. E. RICHARDSON,** DEPUTY