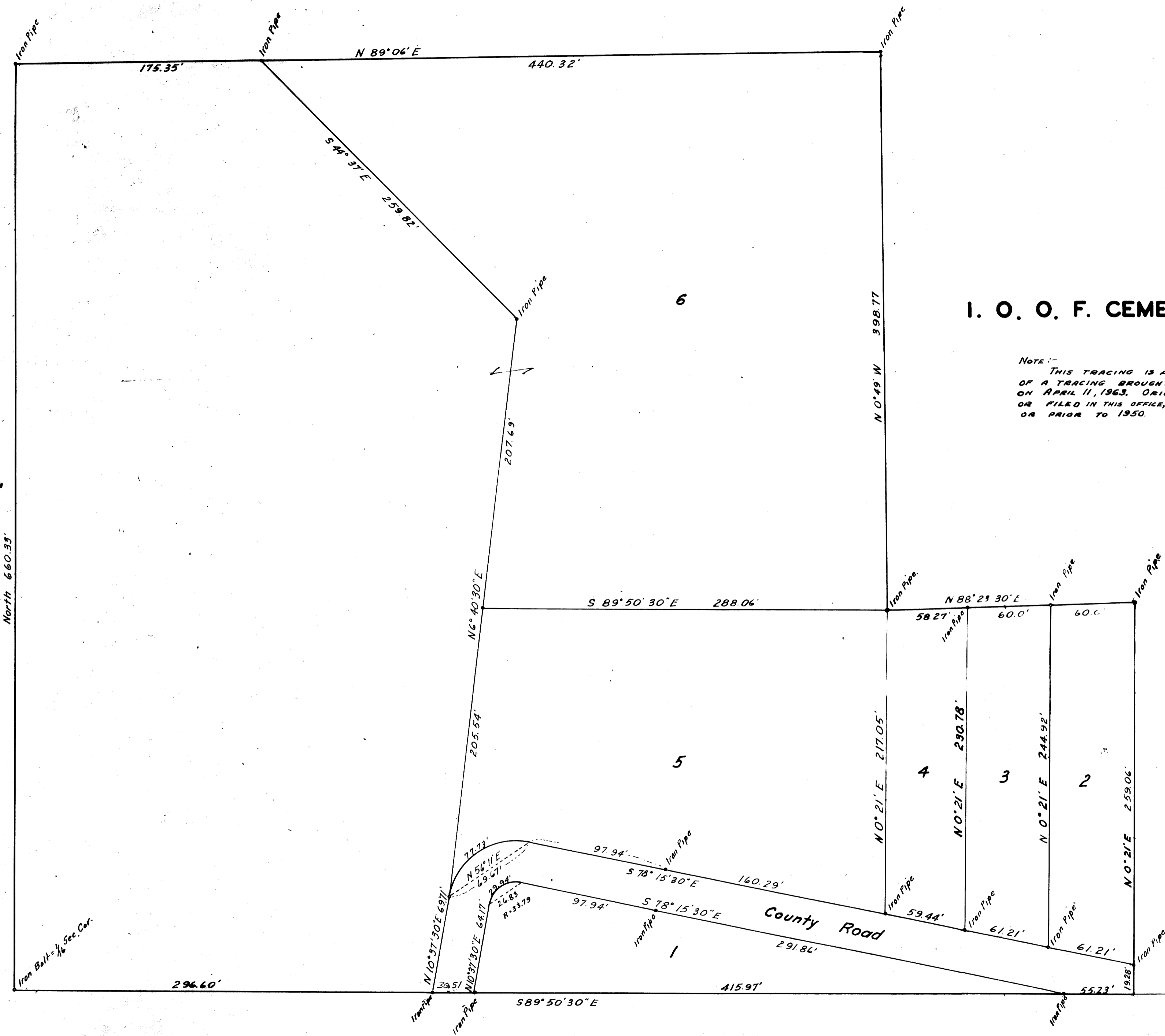


SUBDIVISION OF M. A. KUSLER PROPERTY

T. 29 S. R. 5 W. SEC. 22 SW 1/4

C.S. MAP FILE M25/13
P



I. O. O. F. CEMETERY

NOTE: THIS TRACING IS A DUPLICATE (BY CONTACT PROCESS) OF A TRACING BROUGHT TO THIS OFFICE FOR PRINTS, ON APRIL 11, 1963. ORIGINAL MAP WAS NOT DATED OR FILED IN THIS OFFICE, AND WAS POSSIBLY MADE ON OR PRIOR TO 1950.

Fred M. Darby
FRED M. DARBY
COUNTY SURVEYOR.

FILED *L.L.*
RECEIVED

APR 11 1963

COUNTY SURVEYOR
DOUGLAS COUNTY, ORE.

C.S. MAP FILE M25/13

Brass screw in conc monument
Northeast corner of Myrtle Creek

GABBERTS SECOND ADDITION TO MYRTLE CREEK

REGISTERED
OREGON
LAND SURVEYOR

George C. Baker
JAN 1965
GEO. C. BAKER
77