

COUNTY SURVEYORS FILE DATA
DO NOT REMOVE FROM OFFICE

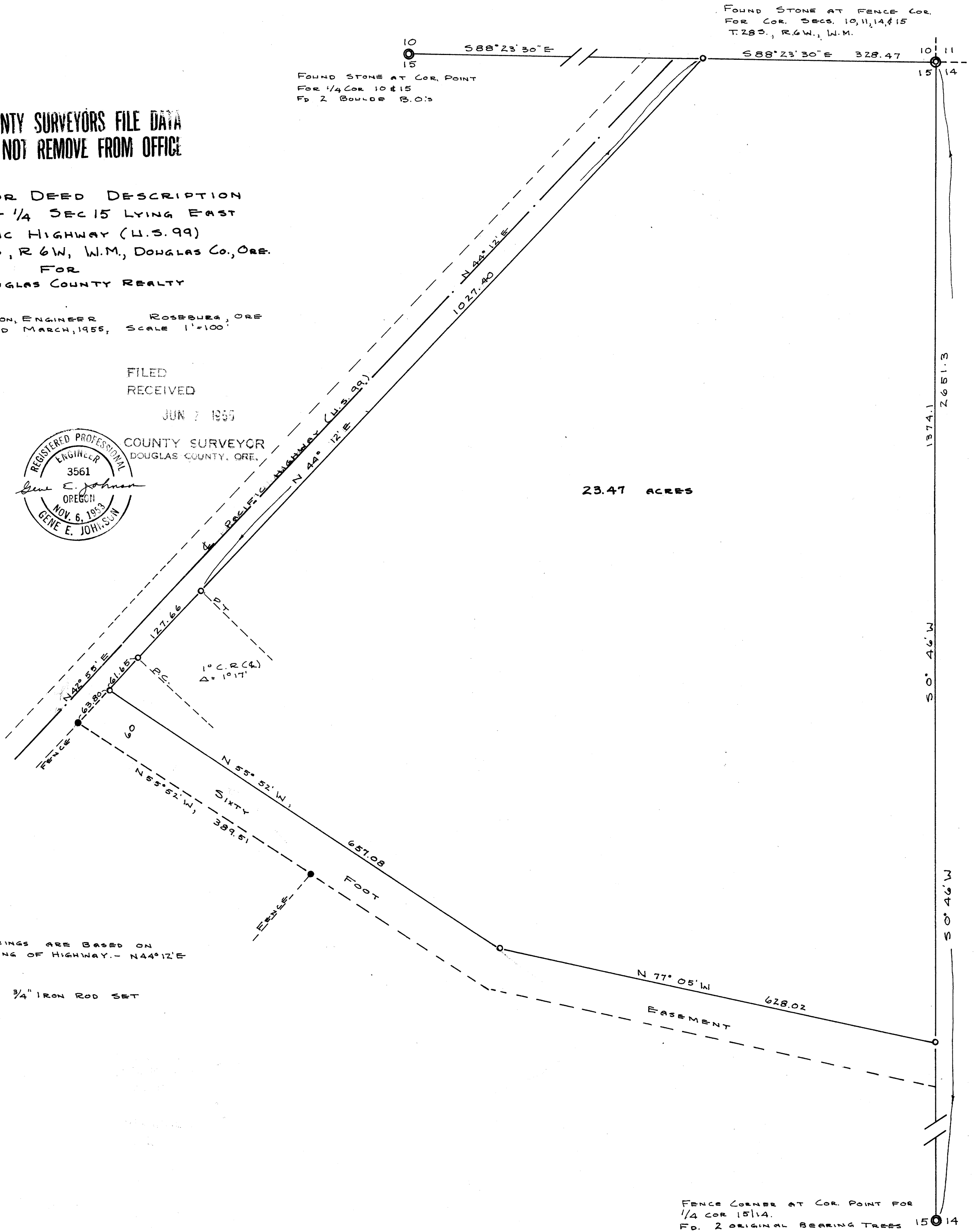
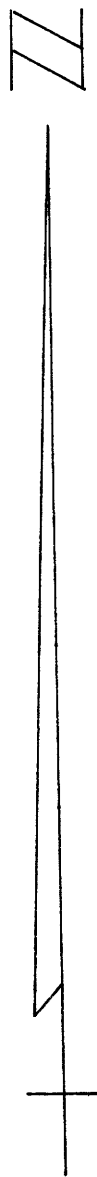
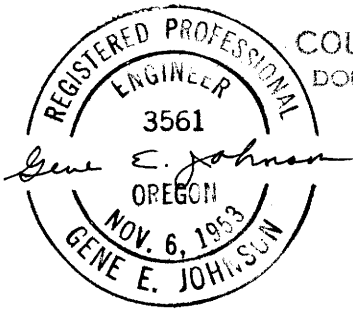
SURVEY FOR DEED DESCRIPTION
PART OF NE 1/4 SEC 15 LYING EAST
OF PACIFIC HIGHWAY (U.S. 99)
SEC. 15, T28S, R6W, W.M., DOUGLAS CO., ORE.
FOR
DOUGLAS COUNTY REALTY

GENE E. JOHNSON, ENGINEER ROSEBURG, ORE.
SURVEYED MARCH, 1955, SCALE 1"=100'

FILED
RECEIVED

JUN 7 1955

COUNTY SURVEYOR
DOUGLAS COUNTY, ORE.



23.47 ACRES

NOTE: BEARINGS ARE BASED ON
RECORD BEARING OF HIGHWAY - N44°12'E

O DENOTES 3/4" IRON ROD SET

FENCE CORNER AT COR. POINT FOR
1/4 COR 15/14.
FD. 2 ORIGINAL BEARING TREES