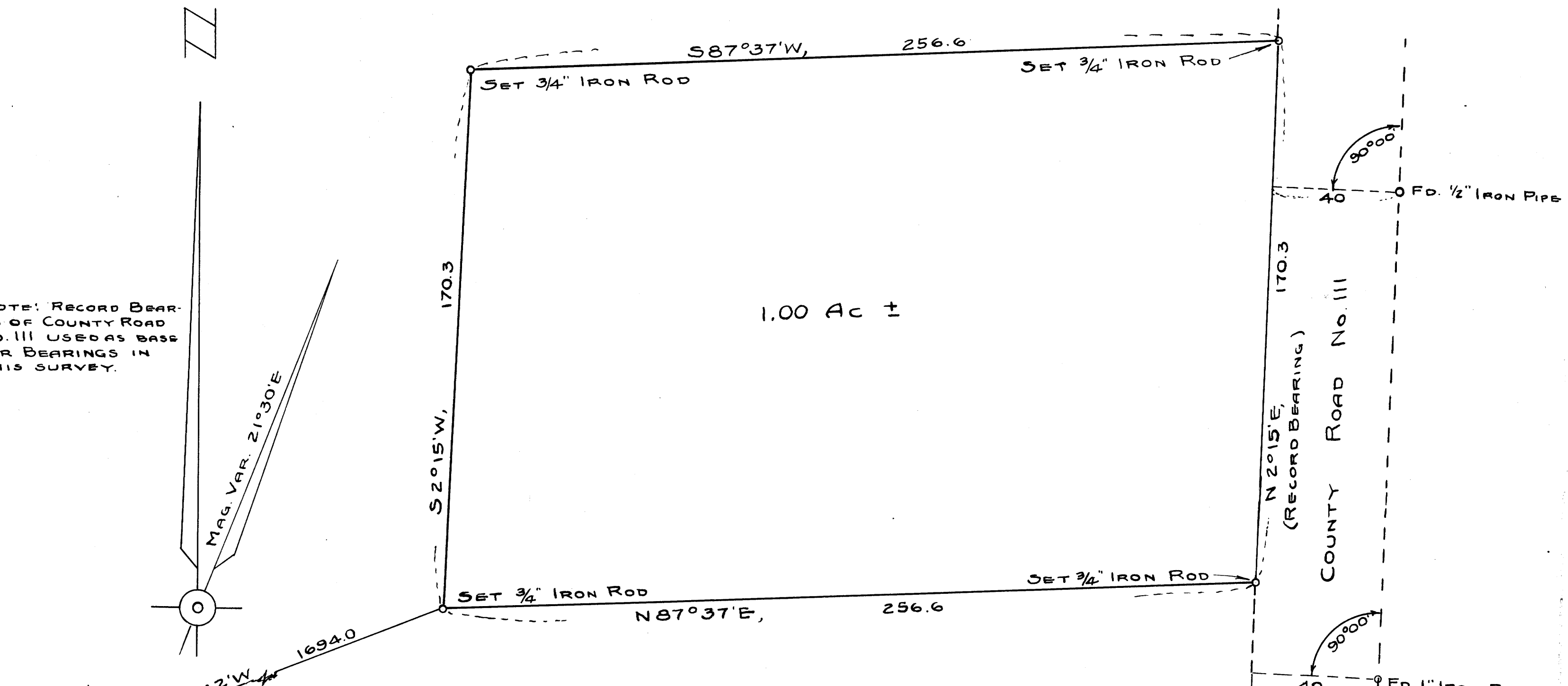


NOTE: RECORD BEARING OF COUNTY ROAD NO. III USED AS BASE FOR BEARINGS IN THIS SURVEY.



16 15
21 22
T28S, R6W
FD 1/2" IRON PIPE

**COUNTY SURVEYOR'S OFFICE
DOUGLAS COUNTY OREGON
SURVEY FOR DEED DESCRIPTION
SECTION 15, T28S, R6W. W.M.**



BEN B. IRVING, COUNTY SURVEYOR
SURVEYED 8-25-49, BY
A.R. EVANS, DEP. COUNTY SURVEYOR
SCALE 1" = 30'

**COUNTY SURVEYORS FILE DATA
DO NOT REMOVE FROM OFFICE**

C.S. FILE 43/143
M 24-80

C.S. FILE 43/143
M 24-80