

COUNTY SURVEYORS FILE DATA
DO NOT REMOVE FROM OFFICE

FILED *L.L.*
RECEIVED

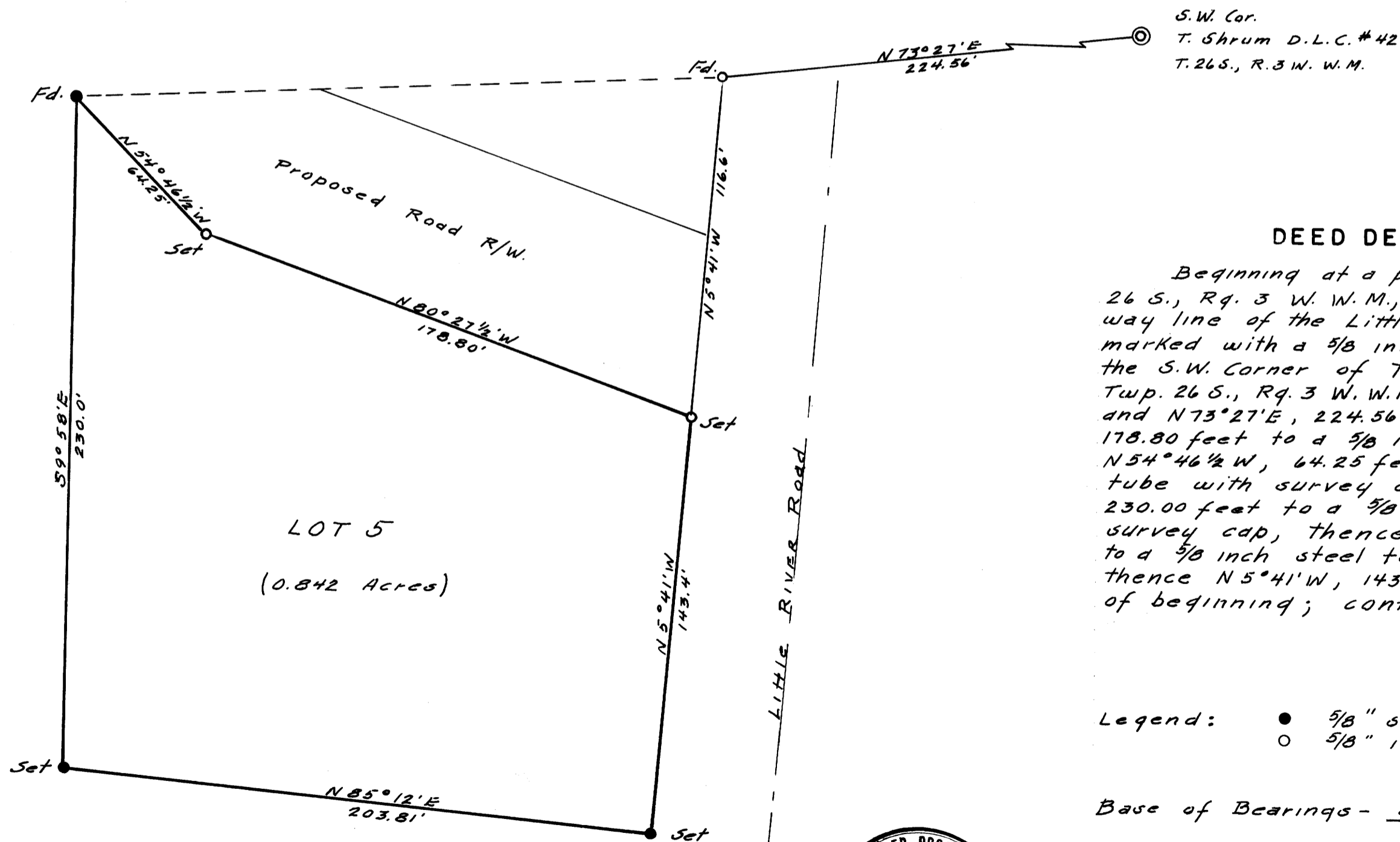
MAR 7 1963

COUNTY SURVEYOR
DOUGLAS COUNTY, ORE.

MAP OF
SURVEY FOR PROPERTY CORNERS
AND DEED DESCRIPTION
SEC. 19, TWP. 26 S, RG. 3 W. W.M.
DOUGLAS COUNTY, OREGON.

SURVEYED FOR - JAS. V. ROMINE
SURVEYED BY - W. S. BARNES

FEB. 1963
SCALE - 1" = 40'

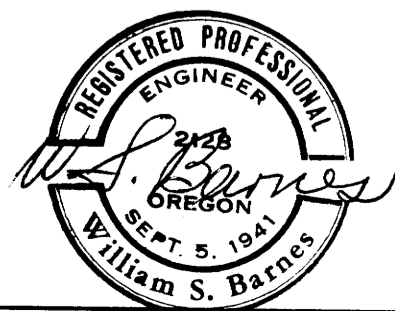


DEED DESCRIPTION

Beginning at a point in Section 19, Twp. 26 S., Rq. 3 W. W.M., on the west right of way line of the Little River Road, said point marked with a 5/8 inch iron rod, from which the S.W. Corner of Thos. Shrum D.L.C. No. 42, Twp. 26 S., Rq. 3 W. W.M., bears N 5° 41' W, 116.6 feet and N 73° 27' E, 224.56 feet, thence N 80° 27 1/2' W, 178.80 feet to a 5/8 inch iron rod, thence N 54° 46 1/2' W, 64.25 feet to a 5/8 inch steel tube with survey cap, thence S 90° 58' E, 230.00 feet to a 5/8 inch steel tube with survey cap, thence N 85° 12' E, 203.81 feet to a 5/8 inch steel tube with survey cap, thence N 5° 41' W, 143.40 feet to the point of beginning; containing 0.842 acres.

Legend: ● 5/8" steel tube with survey cap.
○ 5/8" iron rod.

Base of Bearings - See C.S. File M20-26.



MAP FILE M 24 1 74

M 24-74