

COUNTY SURVEYORS FILE DATA  
DO NOT REMOVE FROM OFFICE

MAP OF

SURVEY FOR PROPERTY CORNERS  
AND DEED DESCRIPTION  
SEC. 19, TWP. 26 S., RG. 3 W. W.M.  
DOUGLAS COUNTY, OREGON.

SURVEYED FOR - JAS. V. ROMINE  
SURVEYED BY - W. S. BARNES

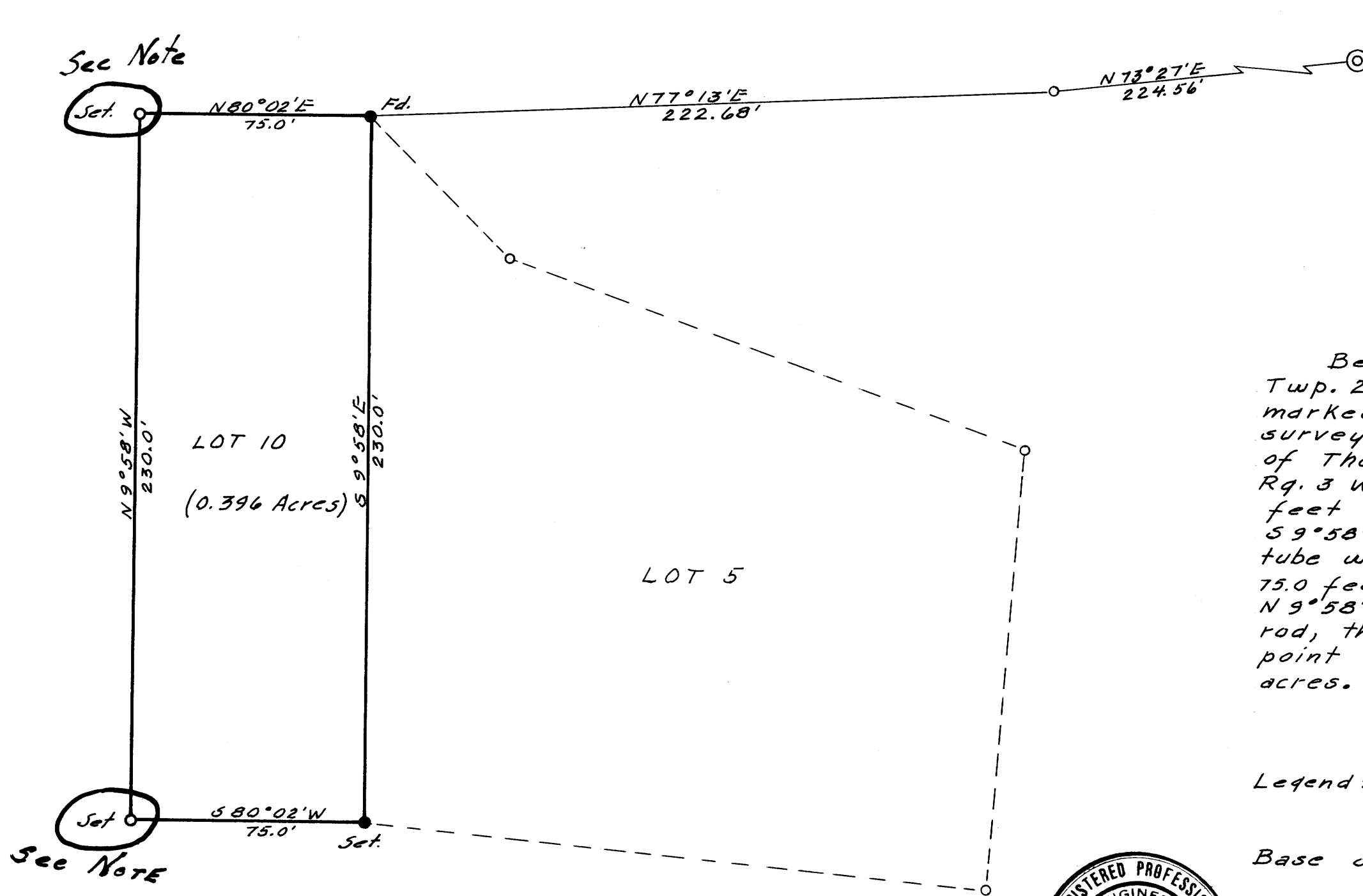
FEB. 1963  
SCALE - 1" = 40'

FILED *L.L.*  
RECEIVED

MAR 7 1963

COUNTY SURVEYOR  
DOUGLAS COUNTY, ORE.

M24-73



S.W. Cor.  
T. Shrum D.L.C. #42  
T. 26 S., R. 3 W. W.M.

DEED DESCRIPTION

Beginning at a point in Section 19, Twp. 26 S, Rq. 3 W. W.M., said point marked with a 5/8 inch steel tube with survey cap, from which the S.W. Corner of Thos. Shrum D.L.C. No. 42, Twp. 26 S, Rq. 3 W. W.M., bears N 77° 13' E, 222.68 feet and N 73° 27' E, 224.56 feet, thence S 9° 58' E, 230.0 feet to a 5/8 inch steel tube with survey cap, thence S 80° 02' W, 75.0 feet to a 5/8 inch iron rod, thence N 9° 58' W, 230.0 feet to a 5/8 inch iron rod, thence N 80° 02' E, 75.0 feet to the point of beginning; containing 0.396 acres.

Legend: ● 5/8" steel tube with survey cap.  
○ 5/8" iron rod

Base of Bearings - See C.S. File M20-26



NOTE:-  
Barnes advises me, on 3/25/63, that points shown thus (set), were pulled and this survey voided  
*Frank M. Dancy*  
Co. Surveyor

MAP FILE M 24-73