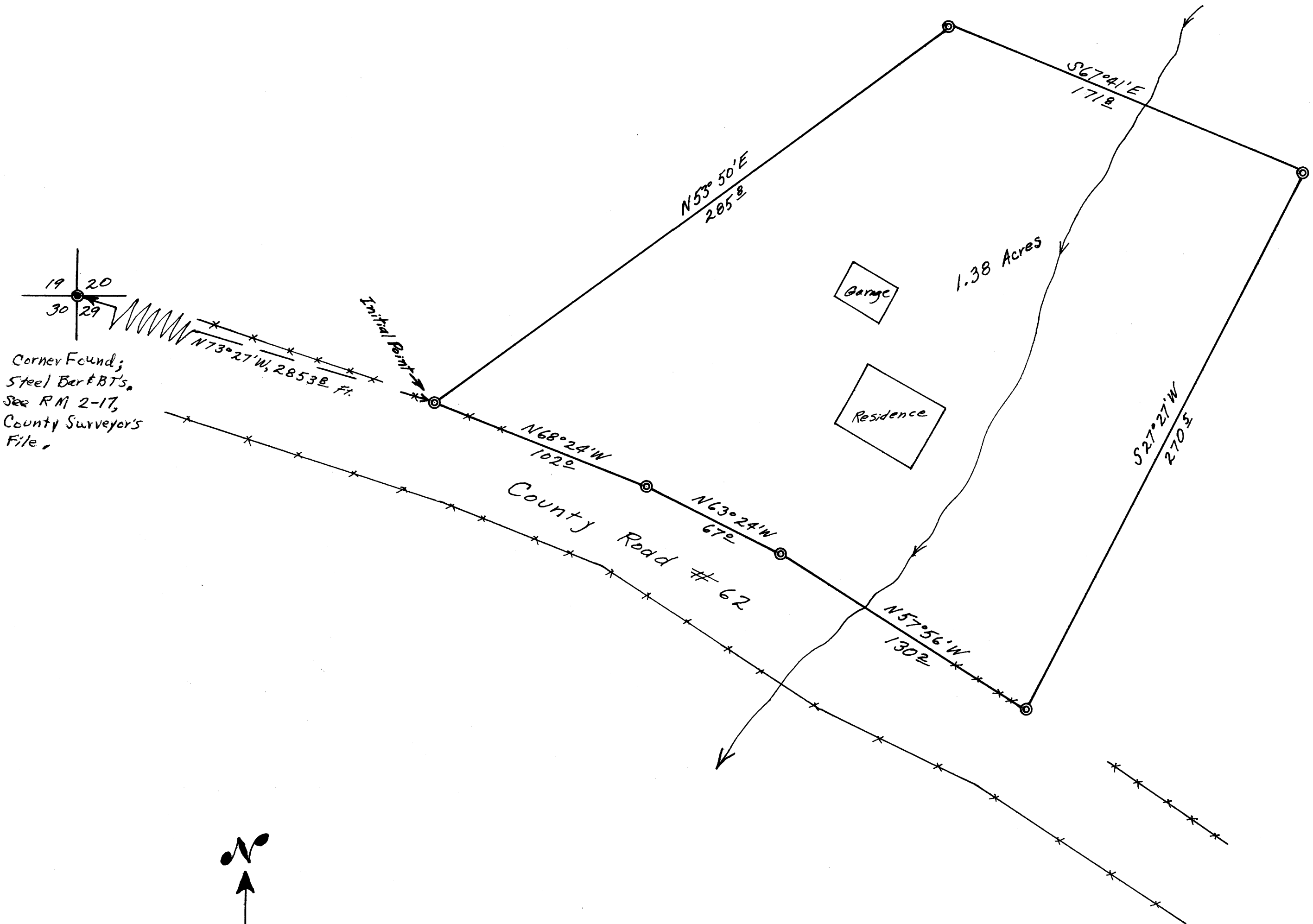


COUNTY SURVEYORS FILE DATA
DO NOT REMOVE FROM OFFICE

SURVEY FOR ANDREW C. REDIFER IN SEC. 29, T21S, R4W, W.M.



LEGEND

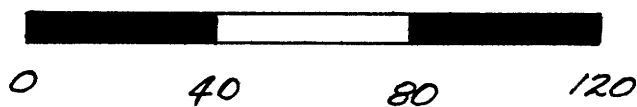
- Corner Found
- ⊙ Corner Set (All are 3/4" x 30" Iron Pipes)

REGISTERED
OREGON
LAND SURVEYOR

Bruce A. Shaner

OCT. 4, 1957
Bruce A. Shaner
430

SCALE



1 inch = 40 Feet

Bearings based on assumed
Mag. Decl. of 20° East.
Surveyed Aug. 3, 1962.

FILED *L.L.*
RECEIVED

AUG 6 1962

COUNTY SURVEYOR
DOUGLAS COUNTY, ORE.