

COUNTY SURVEYORS FILE DATA
DO NOT REMOVE FROM OFFICE

SEC. 3 T27S R6W W.M.

Surveyed for Lynn Borg
Surveyor Don Garrett
Feb. 2, 1963
Scale 1" = 80'

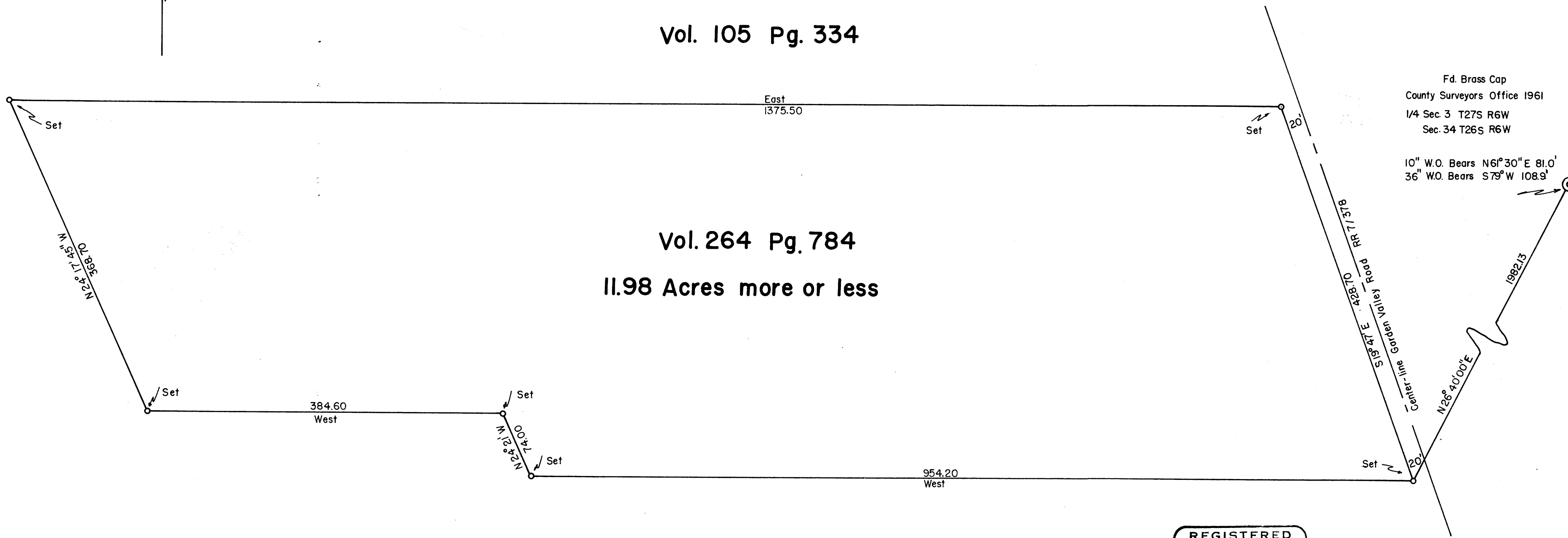
Bearings are based on the North
line of the property surveyed. East
◦ - 1/2" x 40" Iron Rod

Vol. 105 Pg. 334

Vol. 264 Pg. 784

11.98 Acres more or less

Vol. 160 Pg. 287



REGISTERED
OREGON
LAND SURVEYOR

Don Garrett

JULY 14, 1961
DON E. GARRETT
544

FILED *L.L.*
RECEIVED

FEB 28 1963

COUNTY SURVEYOR
DOUGLAS COUNTY, ORE.