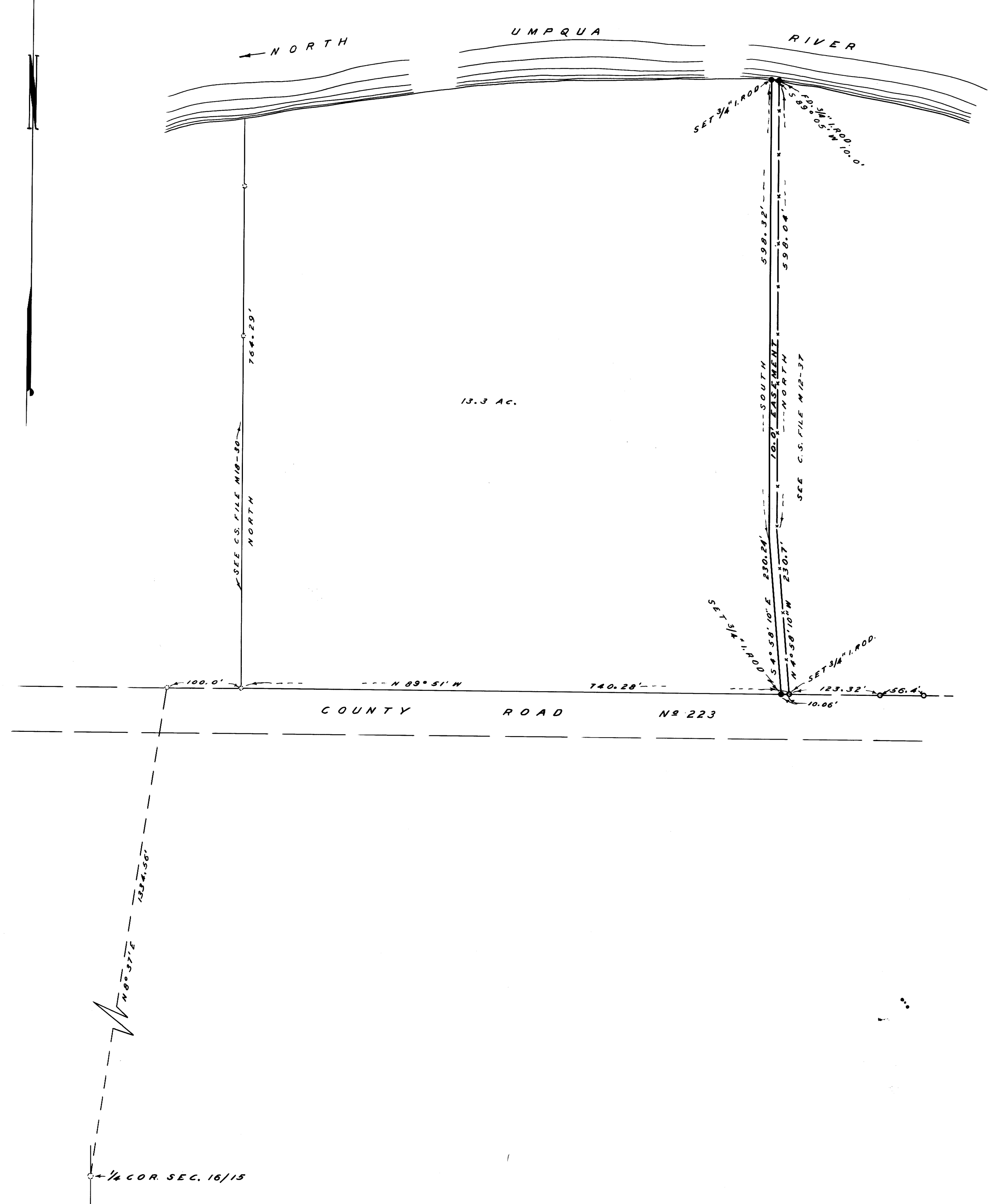


NOTE: BEARINGS BASED ON NORTH, PER
C.S. FILE M12-37.



COUNTY SURVEYOR'S OFFICE
DOUGLAS COUNTY, OREGON

SURVEY OF 10.0' EASEMENT IN
SECTION 15, T26S., R.4 W., W.M.

FRED M. DARBY COUNTY SURVEYOR
SURVEYED FEB. 5, 1963 BY
JAMES W. BYRON - DEPUTY SCALE 1" = 100'
SURVEYED FOR WM. MAGNESS

REGISTERED
OREGON
LAND SURVEYOR

James W. Byron

NOV. 6, 1953
JAMES W. BYRON
303

COUNTY SURVEYORS FILE DATA
DO NOT REMOVE FROM OFFICE