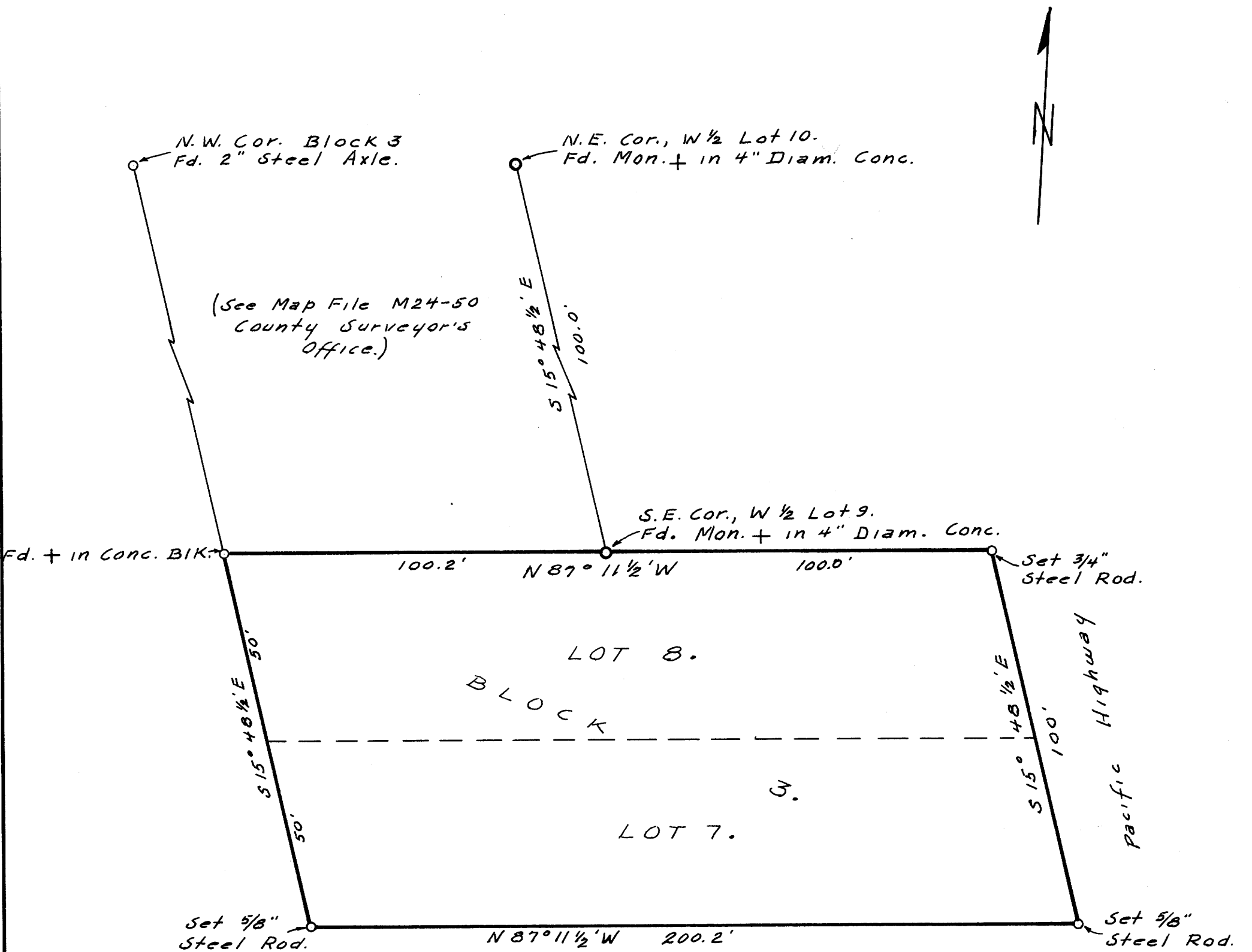


COUNTY SURVEYORS FILE DATA
DO NOT REMOVE FROM OFFICE

SURVEY TO ESTABLISH PROPERTY CORNERS,
LOTS 7 and 8, BLOCK 3,
NORTH PARK ADDITION

ROSEBURG, DOUGLAS COUNTY, OREGON.

SURVEYED FOR ROBT. M. DALY
ENGINEER - W.S. BARNES
Feb. 1963 Scale - 1" = 30'



FILED *L.L.*
RECEIVED

FEB 11 1963

COUNTY SURVEYOR
DOUGLAS COUNTY, ORE.

