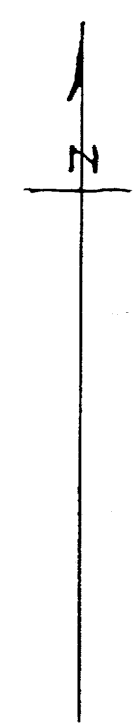
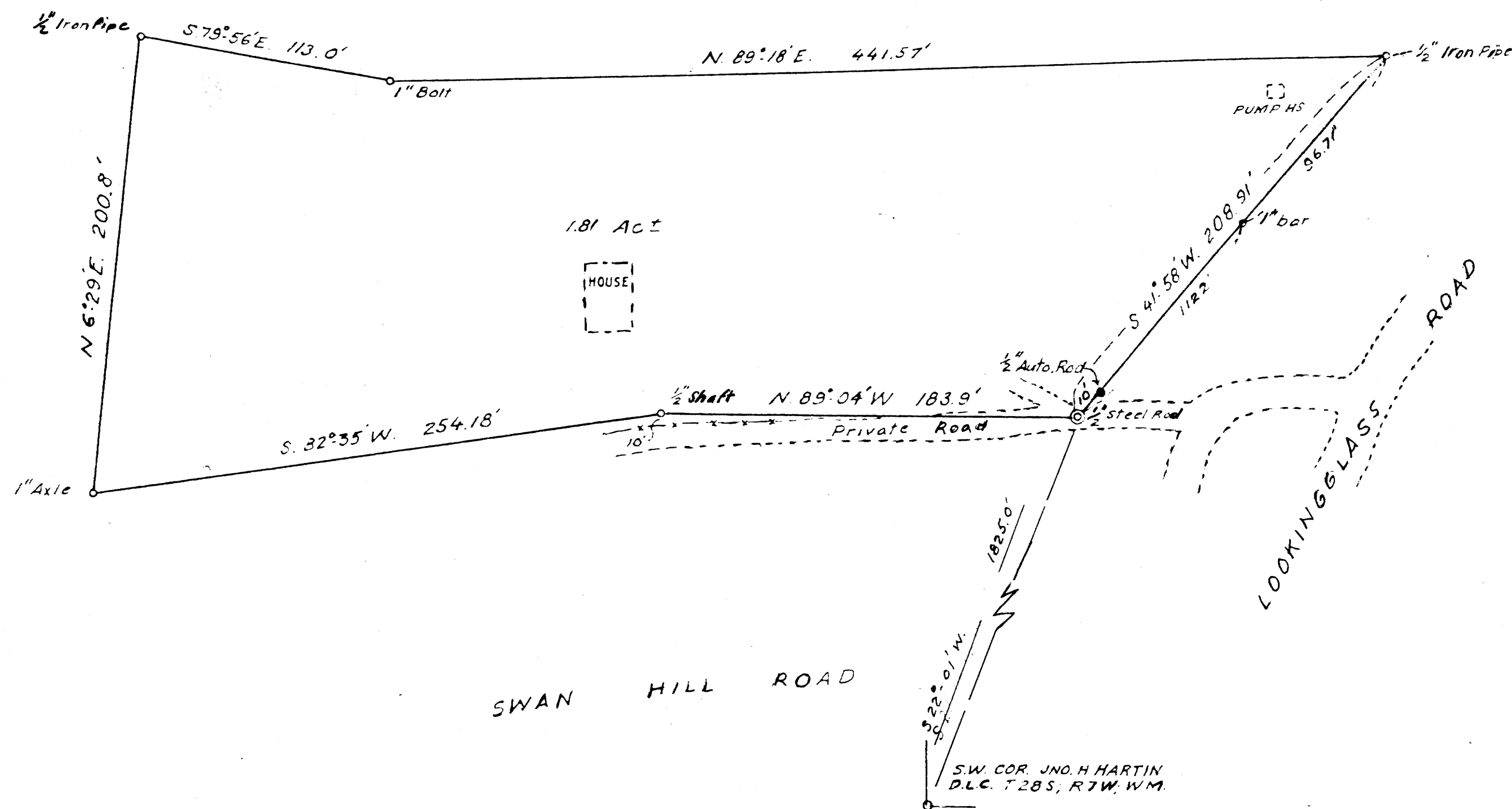


M24-6



FILED *L.L.*  
 RECEIVED  
 AUG 2 1962  
 COUNTY SURVEYOR  
 DOUGLAS COUNTY, ORE.

COUNTY SURVEYORS FILE DATA  
 DO NOT REMOVE FROM OFFICE

THIS COPY MADE FROM  
 A XEROX 2510  
 DATE *July 27, 89*

*HERMAN SCHULZE ESTATE,*  
*PORTION TO CECIL SCHULZE AT*  
*JUNCTION SWAN HILL ROAD & LOOKINGGLASS ROAD,*  
*SEC. 13, T.28S; R.7W, W1L. MER;*  
*DOUGLAS COUNTY, ORE.*  
 MAY, 1962  
*Arthur Boyer* 1"=50 ft.

M24-6