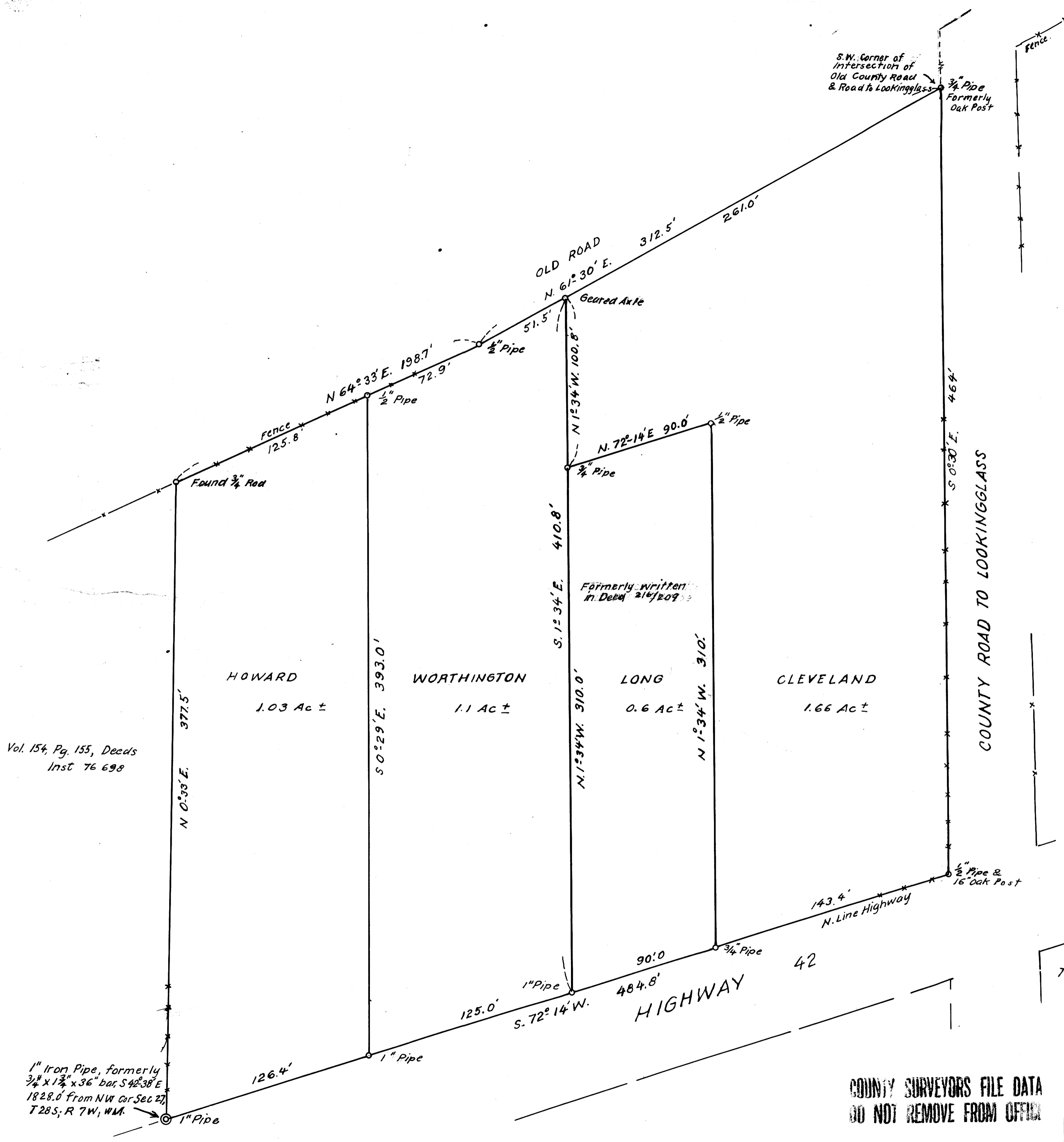


MAP FILE M-2



Vol. 154, Pg. 155, Deeds  
Inst 76 698

1" Iron Pipe, formerly  
3/4" x 1 3/4" x 36" bar, S 42° 38' E  
1828.0' from NW cor. Sec 27,  
T 28 S, R 7 W, W.M.

Tot. Acreage - 4.39

FILED *LL*  
RECEIVED  
FEB 5 1963  
COUNTY SURVEYOR  
DOUGLAS COUNTY, ORE.

COUNTY SURVEYORS FILE DATA  
DO NOT REMOVE FROM OFFICE

DIVISION OF PROPERTY OF  
LATE CHAS. CLEVELAND IN  
SEC. 27, T. 28 S; R. 7 W; W. M;  
DOUGLAS COUNTY, ORE.  
JAN. 1963. *AB.* 1" = 40 ft.

MAP FILE M-24 57