

COUNTY SURVEYORS FILE DATA  
DO NOT REMOVE FROM OFFICE

SURVEY FOR DEED DESCRIPTION  
N.W. 1/4 SECT. 10, T22S., R5W. W.M.

for  
E.G. WHIPPLE MILL DRAIN, ORE.  
Scale 1" = 100' Feb. 13, 1963

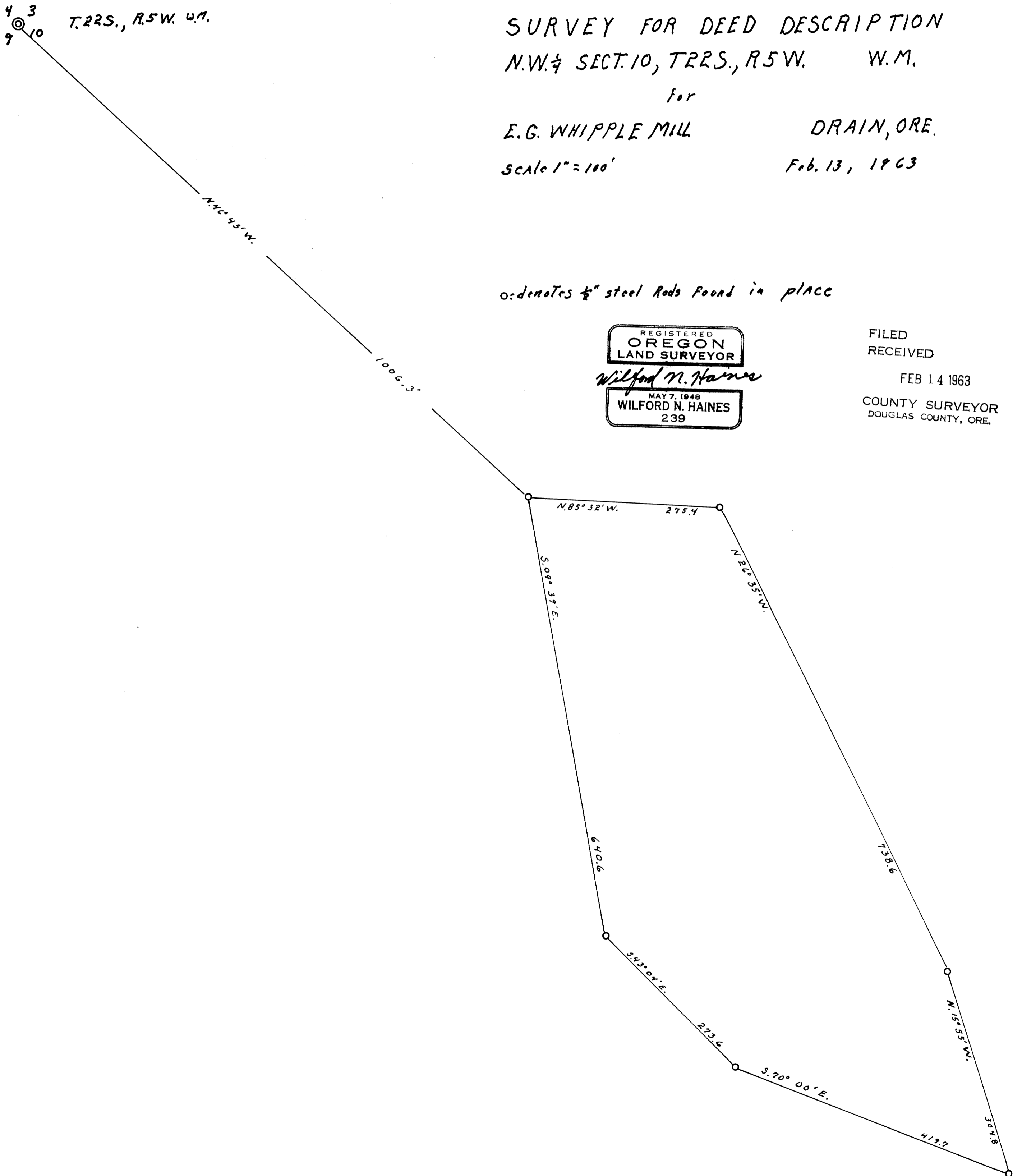
o: denotes 1/2" steel Rods Found in place

REGISTERED  
OREGON  
LAND SURVEYOR  
*Wilford N. Haines*  
MAY 7, 1948  
WILFORD N. HAINES  
239

FILED  
RECEIVED

FEB 14 1963

COUNTY SURVEYOR  
DOUGLAS COUNTY, ORE.



3 prints